

THIS MAP IS FOR THE PURPOSE OF AD VALOREM TAXATION ONLY.

Sec.14 & 15, T.9N.,R.3W., S.B.B.&M.

Barstow Unified
Tax Rate Area
56062 56069

0421 - 01



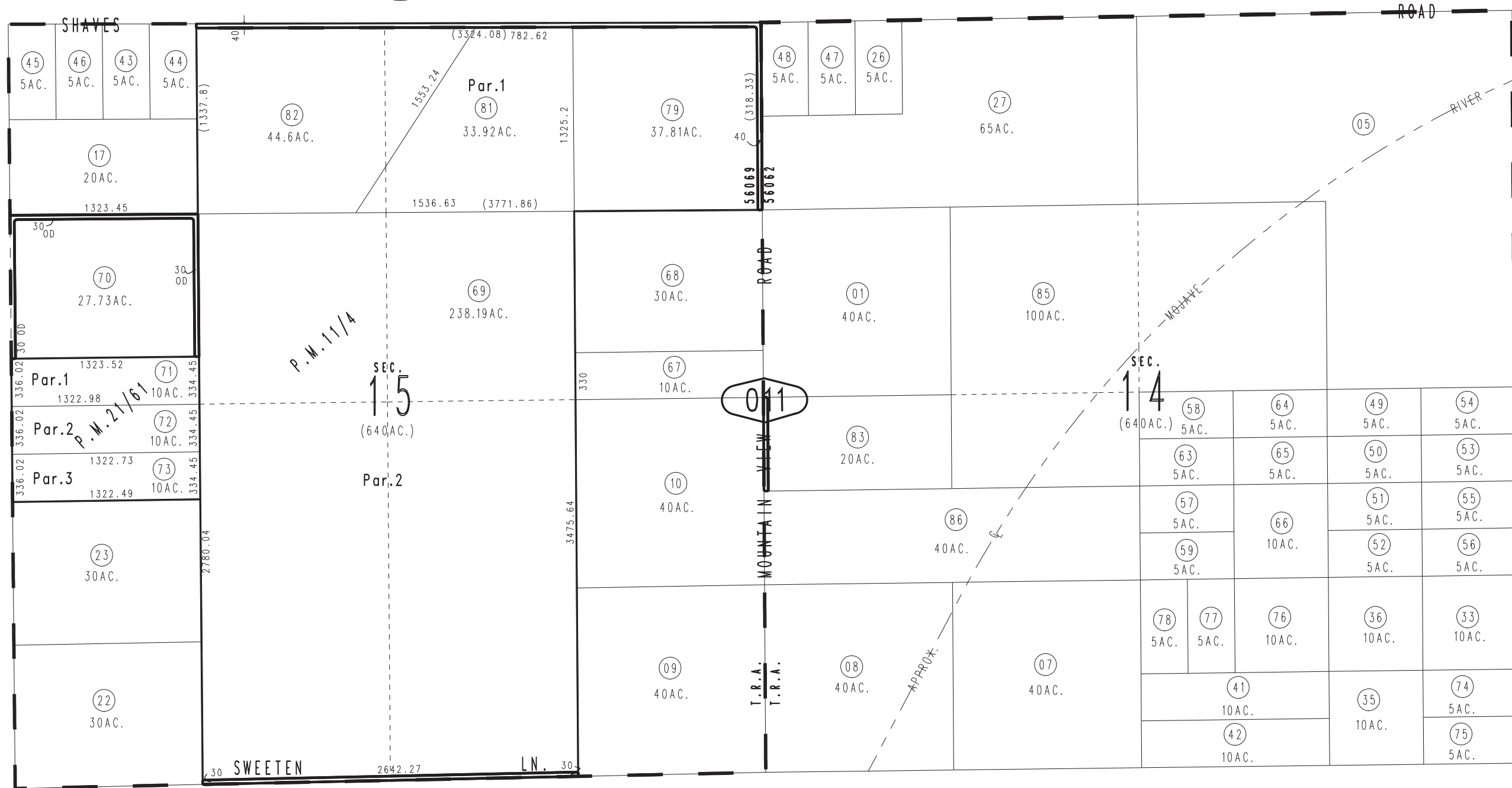
0420
06

0488
08

0488
11

0488
13

02



October 2003

Parcel Map No 2419, P.M.21/61
Parcel Map No 1166, P.M.11/4

Assessor's Map
Book 0421 Page 01
San Bernardino County

REVISED