

THIS MAP IS FOR THE PURPOSE
OF AD VALOREM TAXATION ONLY.

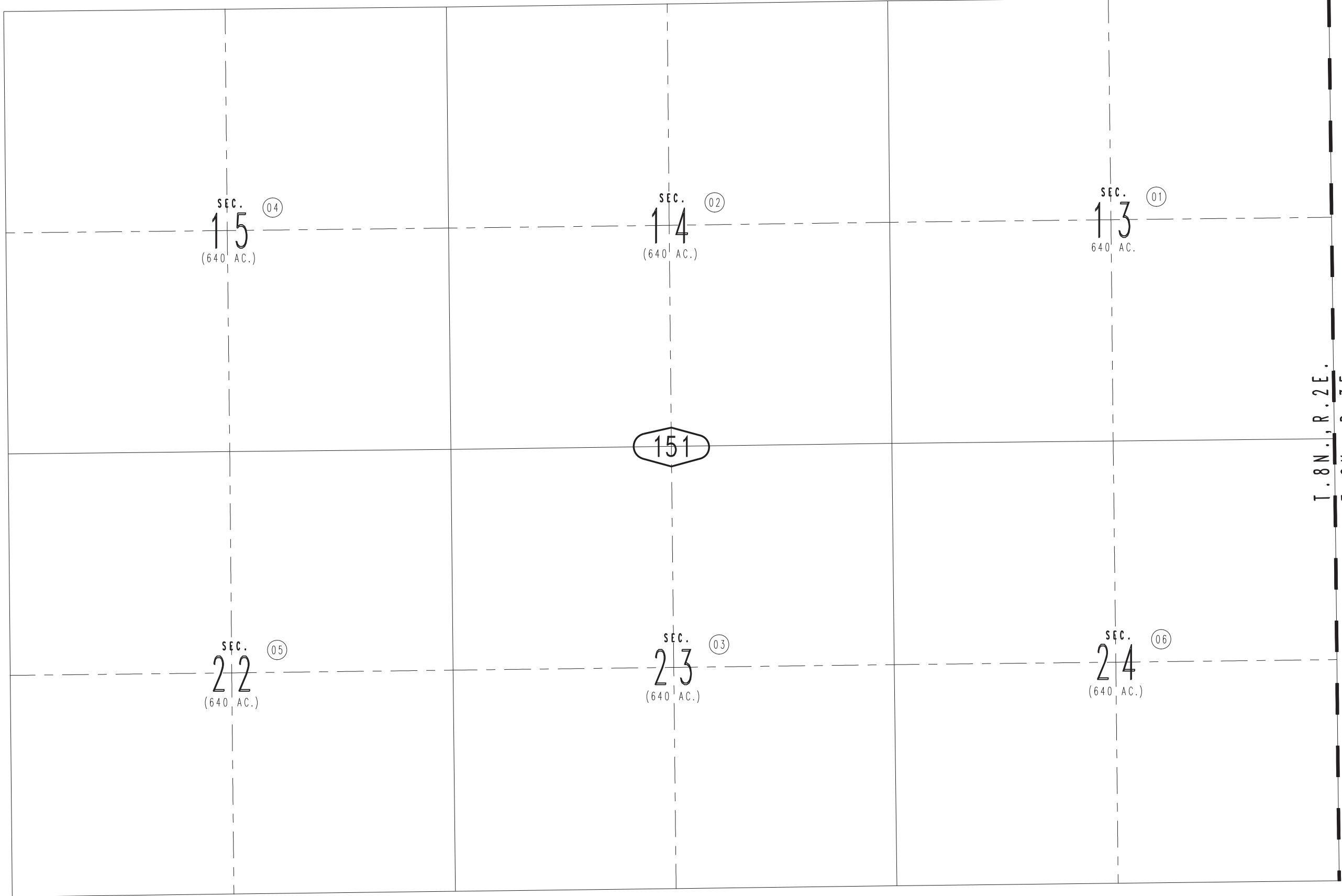
Sec.13,14,15,22,23,24, T.8N.,R.2E., S.B.B.&M.

Barstow Unified
Tax Rate Area
56008

0416 - 15



12



SEC. 15 (640 AC.) 04

SEC. 14 (640 AC.) 02

SEC. 13 (640 AC.) 01

14

151

0528
04

SEC. 22 (640 AC.) 05

SEC. 23 (640 AC.) 03

SEC. 24 (640 AC.) 06

T.8N., R.2E.
T.8N., R.3E.

16

REVISED