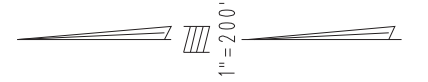


THIS MAP IS FOR THE PURPOSE
OF AD VALOREM TAXATION ONLY.

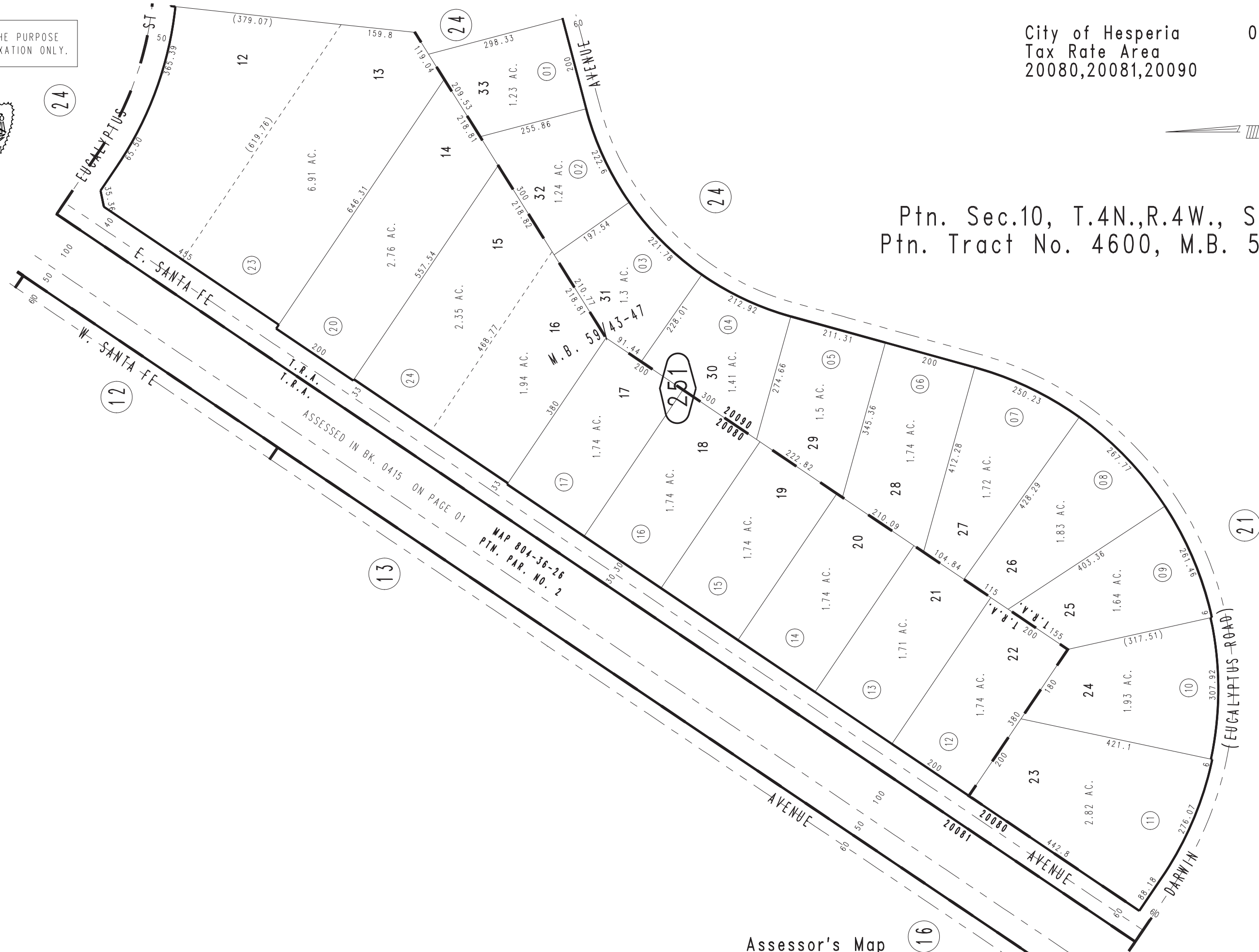


City of Hesperia
Tax Rate Area
20080,20081,20090

0415 - 25



Ptn. Sec.10, T.4N.,R.4W., S.B.B.&M.
Ptn. Tract No. 4600, M.B. 59/43-47



ASSESSED IN BK. 0415 ON PAGE 01

MAP 804-36-26
PTN. PAR. NO. 2

Assessor's Map
Book 0415 Page 25
San Bernardino County

REVISED
05/12/16 GW