

(01) Ptn. Tract No. 4600, M.B. 59/43-47

(01)

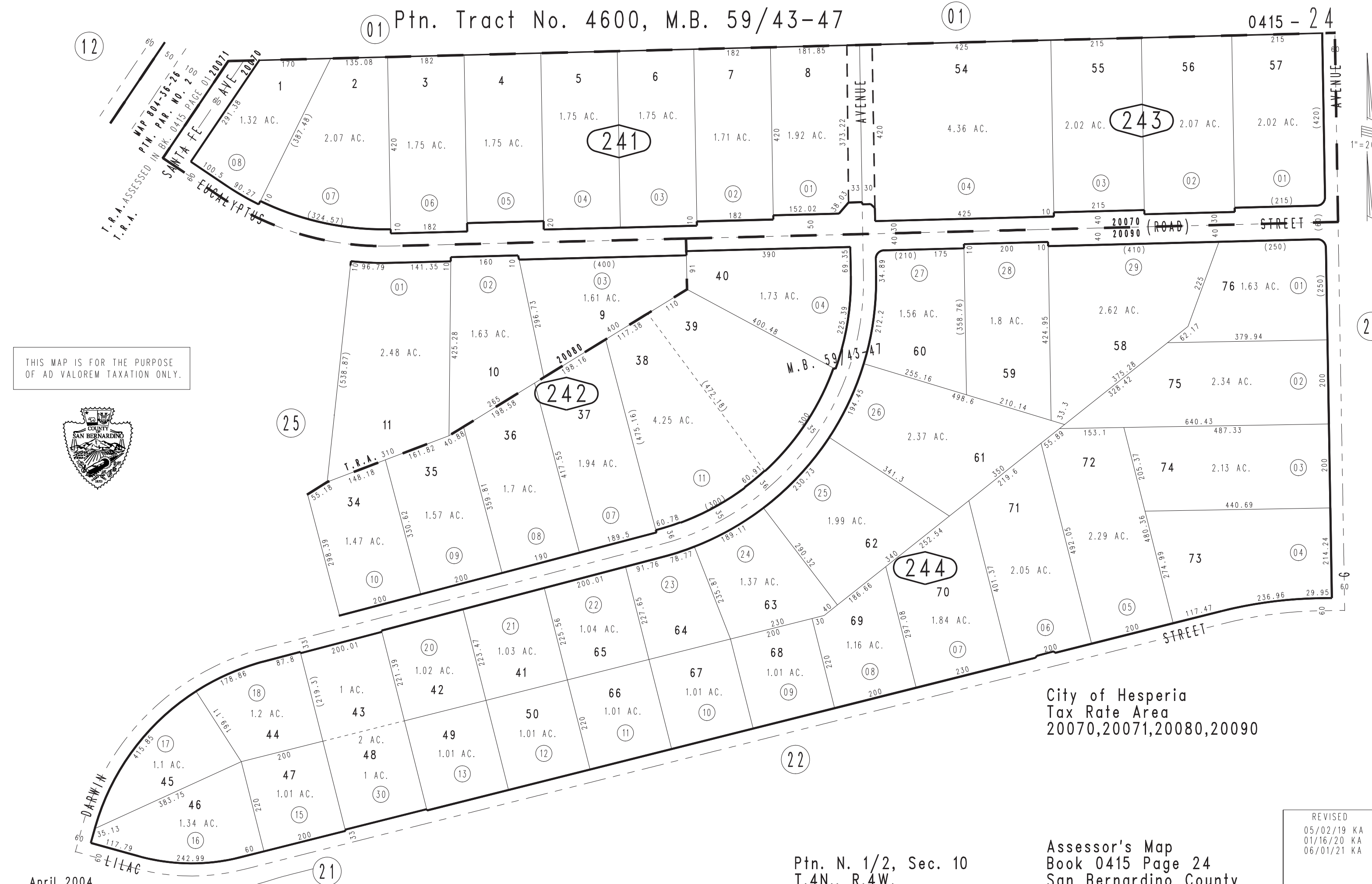
0415 - 24

(12)

T.R.A. ASSESSED IN BK. 0415 PAGE 01/20071  
T.R.A.  
SANTA FE  
EUCALYPTUS  
8 AVE  
20070  
20090

1" = 200'

THIS MAP IS FOR THE PURPOSE  
OF AD VALOREM TAXATION ONLY.



City of Hesperia  
Tax Rate Area  
20070,20071,20080,20090

April 2004

Ptn. N. 1/2, Sec. 10  
T.4N., R.4W.

Assessor's Map  
Book 0415 Page 24  
San Bernardino County

REVISED  
05/02/19 KA  
01/16/20 KA  
06/01/21 KA