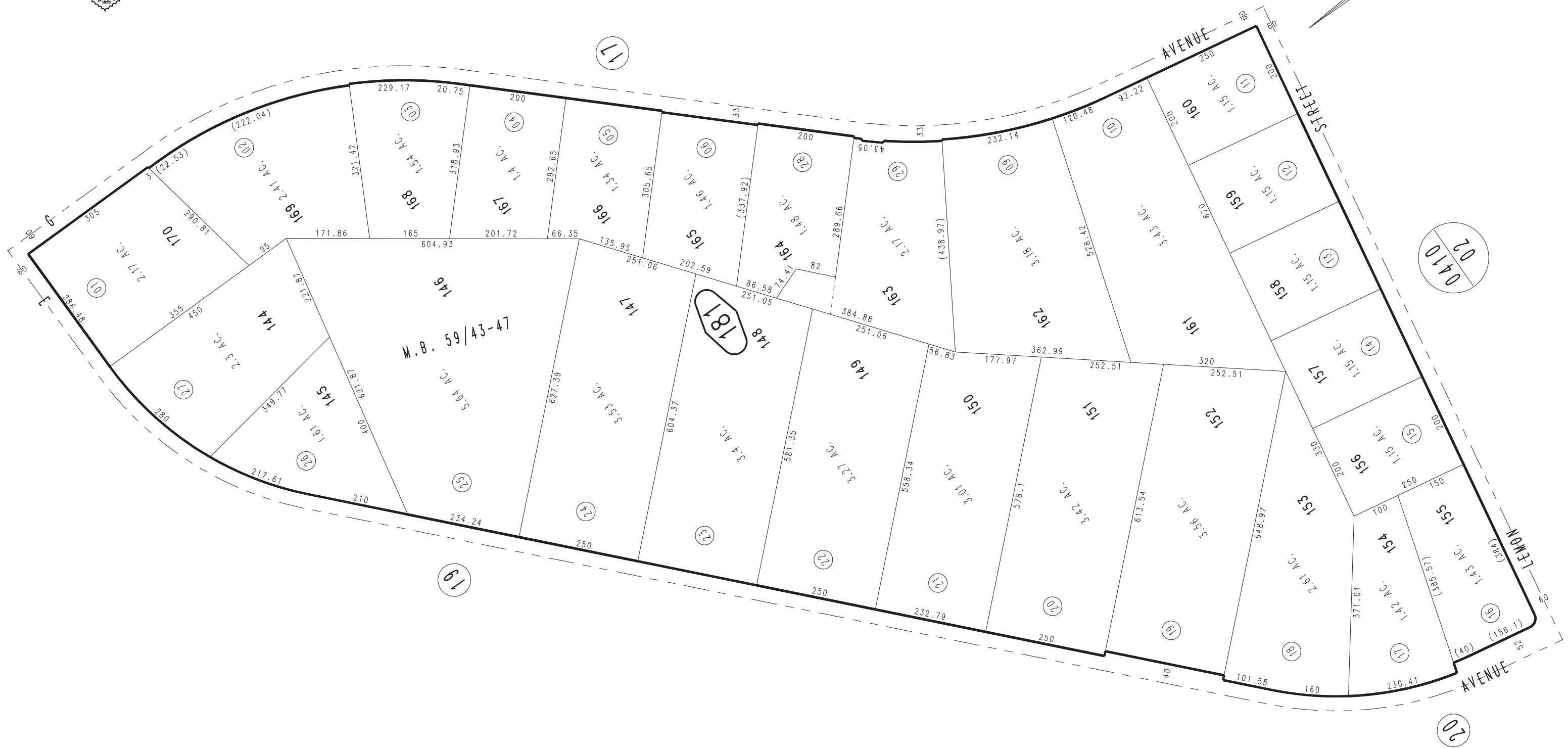
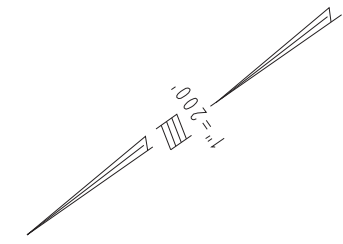


THIS MAP IS FOR THE PURPOSE
OF AD VALOREM TAXATION ONLY.

Ptn. Tract No. 4600, M.B. 59/43-47

City of Hesperia
Tax Rate Area
20090

0415 - 18



April 2004

Ptn. S.E.1/4, Sec. 10
T.4N., R.4W.

Assessor's Map
Book 0415 Page 18
San Bernardino County

REVISED
10/06/22 KA