

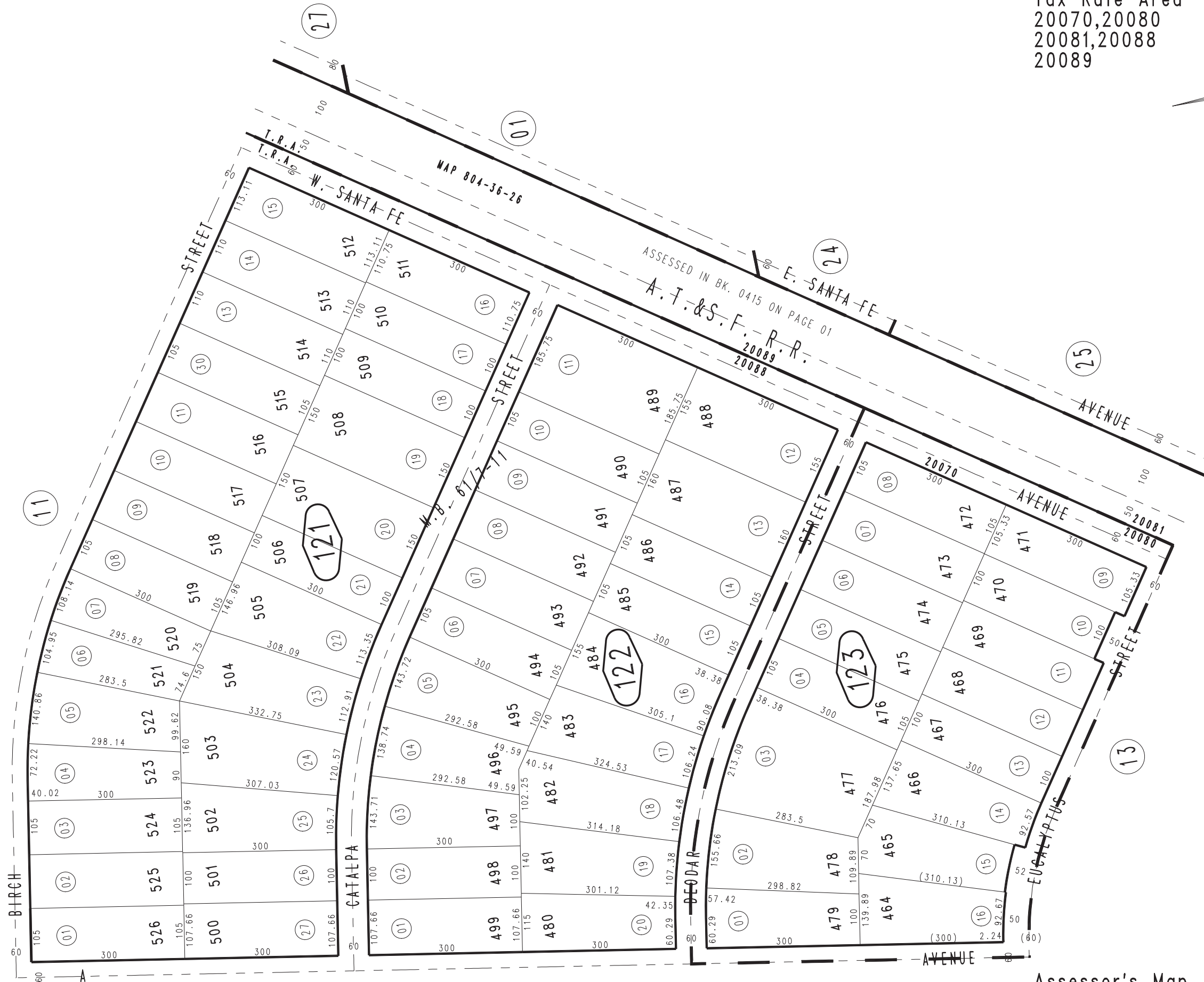
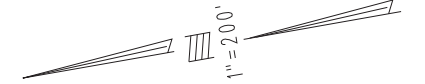
THIS MAP IS FOR THE PURPOSE  
OF AD VALOREM TAXATION ONLY.



Ptn. Tract No. 5104, M.B. 61/7-11

City of Hesperia  
Tax Rate Area  
20070,20080  
20081,20088  
20089

0415 - 12



April 2004

Ptn. S.W.1/4, Sec. 3  
T.4N., R.4W.

Assessor's Map  
Book 0415 Page 12  
San Bernardino County

REVISED  
11/23/22 KA