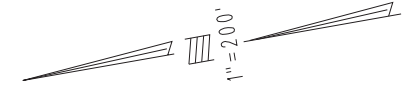


THIS MAP IS FOR THE PURPOSE OF AD VALOREM TAXATION ONLY.

Pln. Map No. 1 of Hesperia M.B. 12/21-27

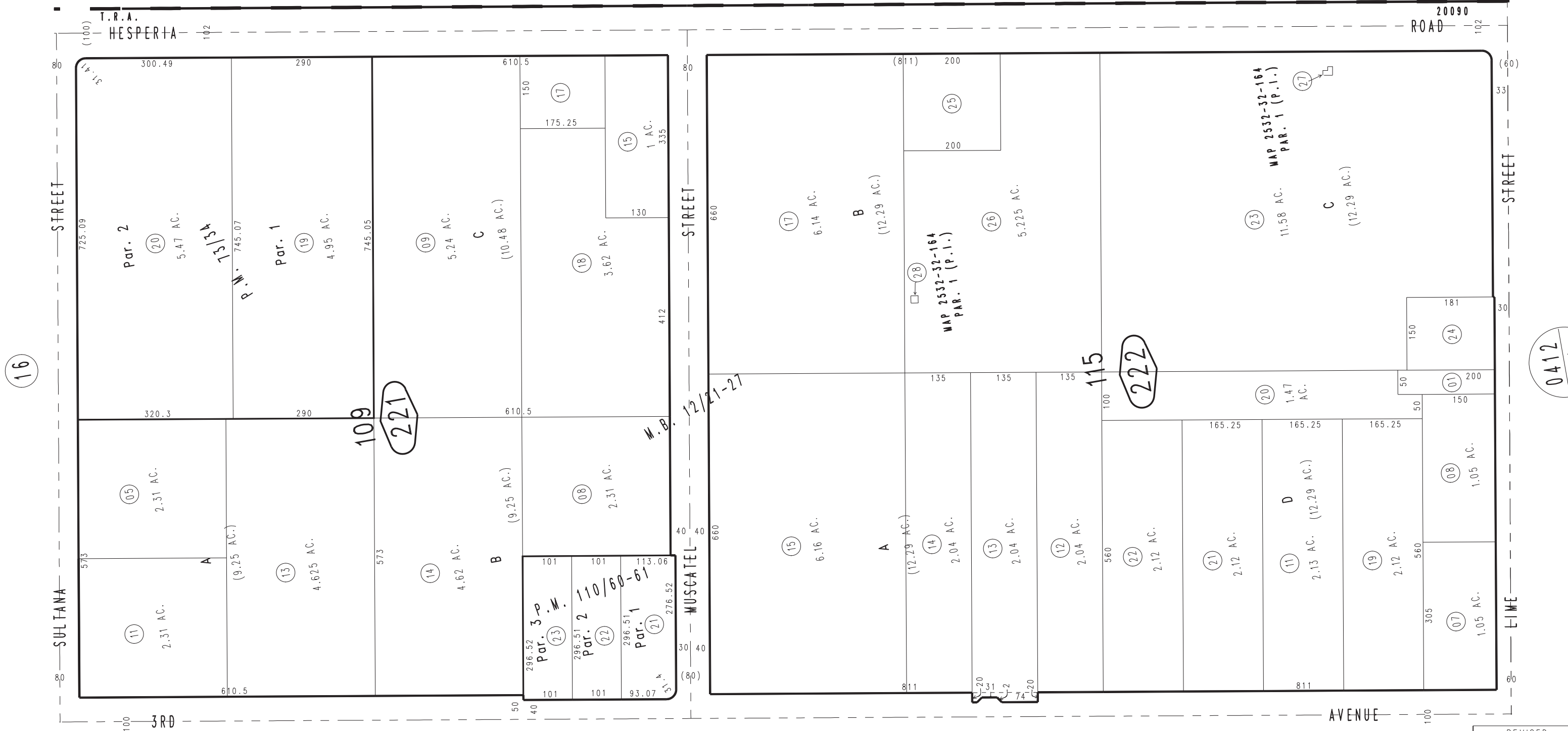
City of Hesperia
Tax Rate Area
20090

0413 - 22



0410
21

0410
24



16

0412
04

21

April 2004

Parcel Map No. 10244, P.M. 110/60-61
Parcel Map No. 7195, P.M. 73/34

Pln. N.W.1/4, Sec. 28
T.4N., R.4W.

Assessor's Map
Book 0413 Page 22
San Bernardino County

REVISED
04/02/15 KC
07/10/17 GW