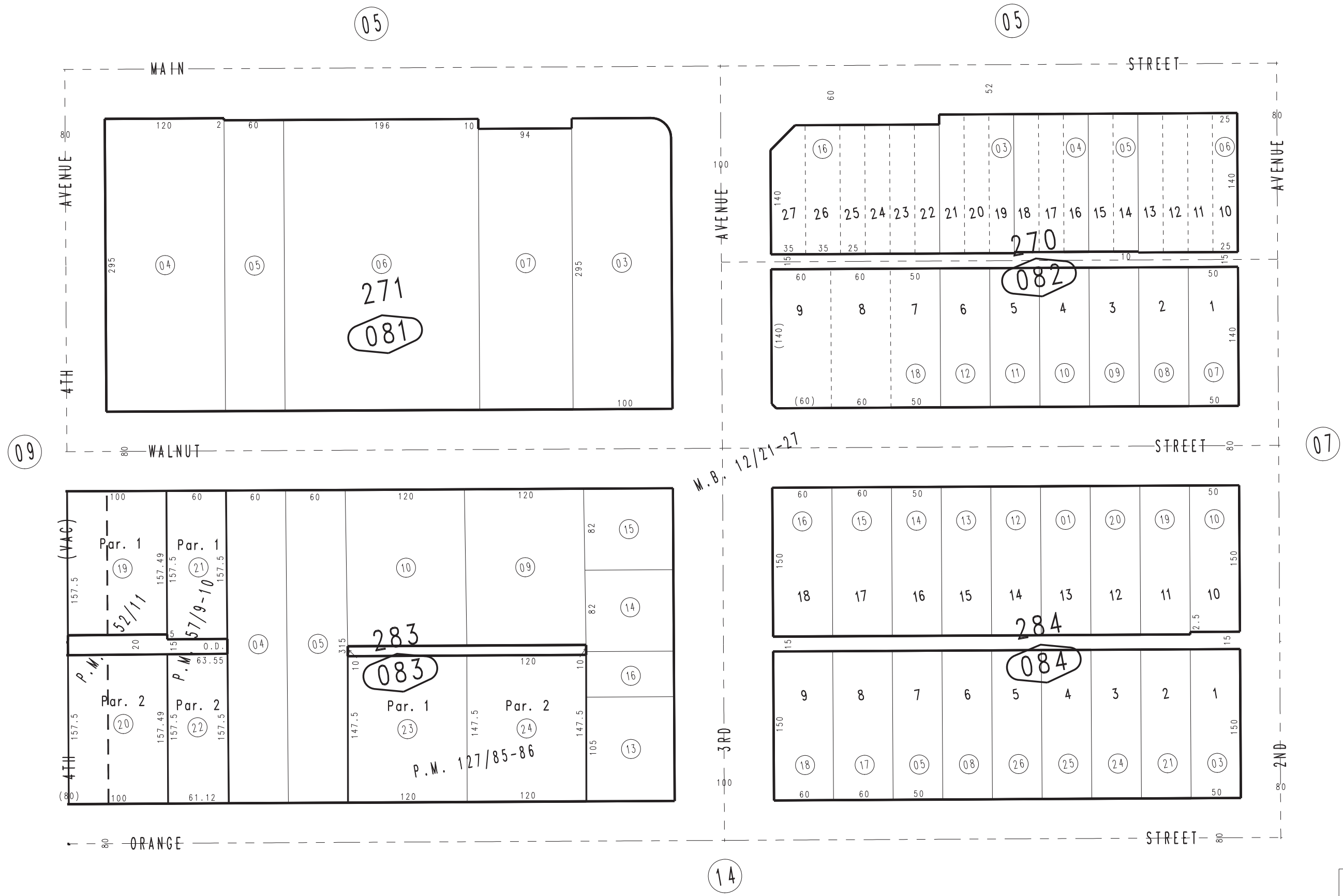
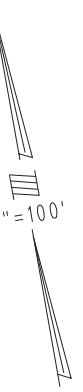


THIS MAP IS FOR THE PURPOSE OF AD VALOREM TAXATION ONLY.

Pln. Map No. 1 of Hesperia M.B. 12/21-27

City of Hesperia
Tax Rate Area
20090

0413 - 08



Parcel Map No. 11457, P.M. 127/85-86
 Parcel Map No. 5623, P.M. 57/9-10
 Parcel Map No. 5129, P.M. 49/54, Amended P.M. 52/11

April 2004

Assessor's Map
 Book 0413 Page 08
 San Bernardino County

REVISED
 03/26/08 KA