

THIS MAP IS FOR THE PURPOSE
OF AD VALOREM TAXATION ONLY.

Ptn. Tract No. 4482, M.B. 56/22-25

City of Hesperia
Tax Rate Area
20090

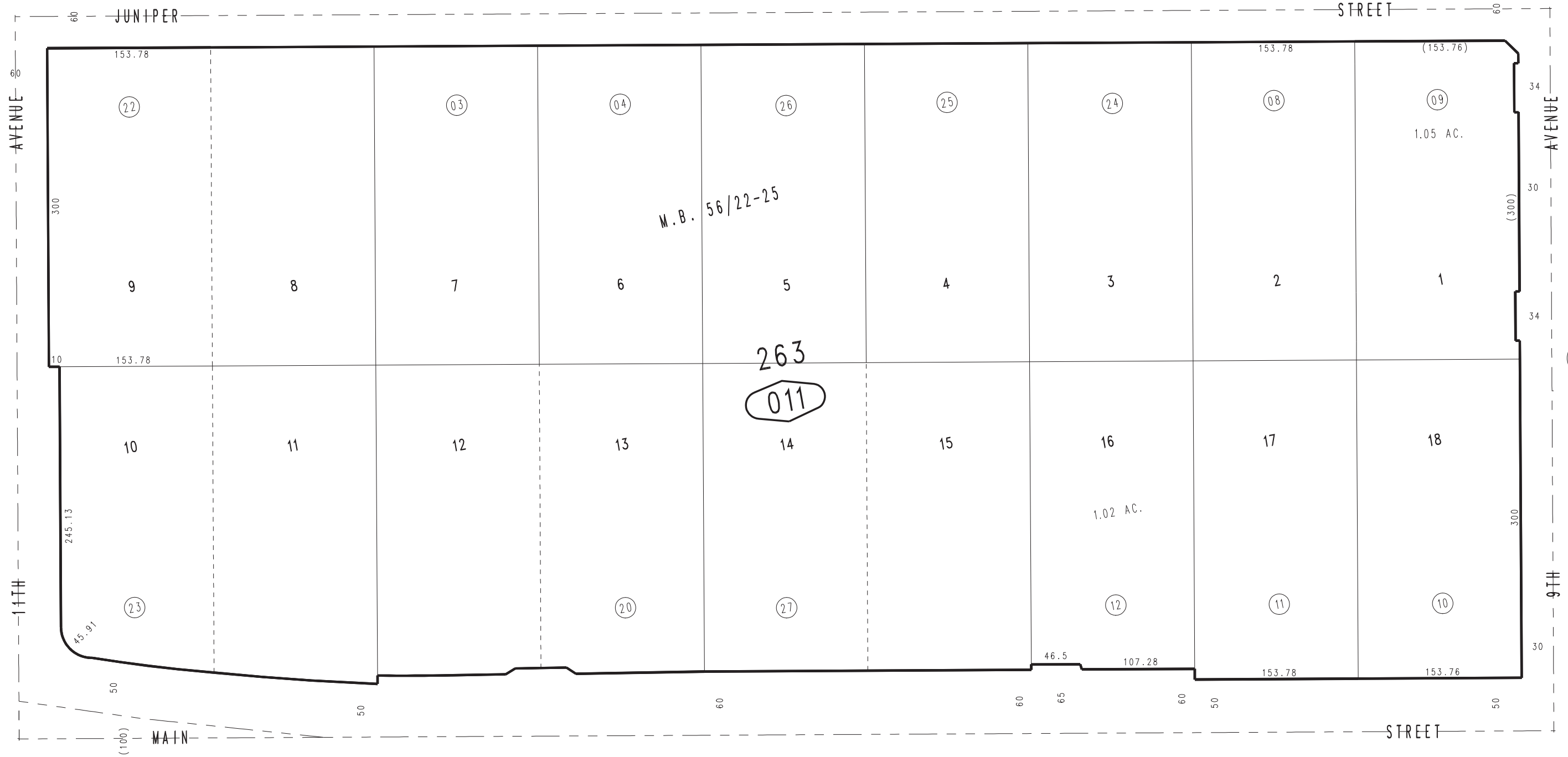
0413 - 01



0407
25

0407
26

1"=100'



0408
18

April 2004

Ptn. N.E.1/4, Sec. 20
T.4N., R.4W.

Assessor's Map
Book 0413 Page 01
San Bernardino County

REVISED
11/13/23 KA