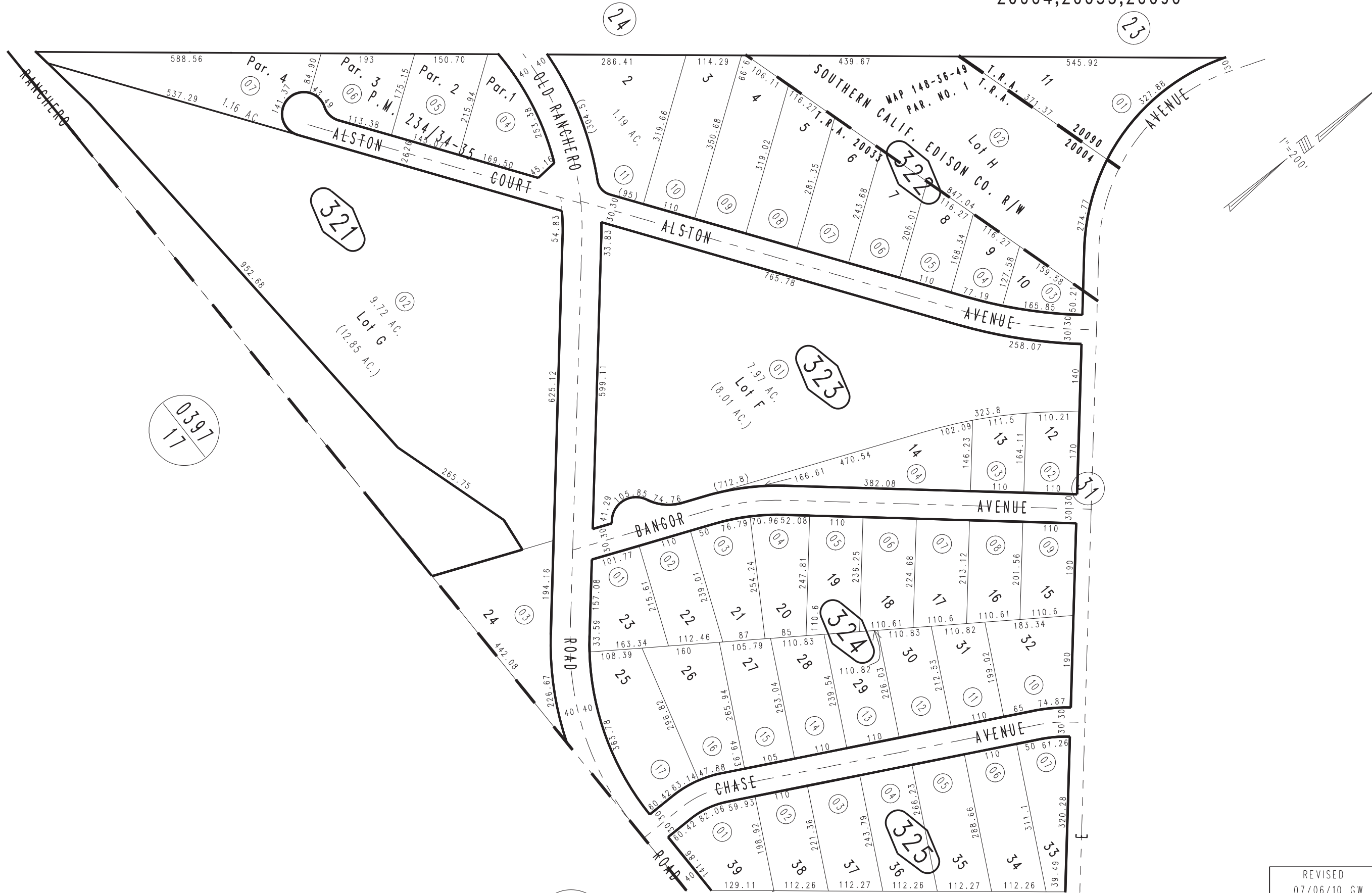


THIS MAP IS FOR THE PURPOSE
OF AD VALOREM TAXATION ONLY.

Ptn. Tract No. 5422, M.B. 65/19-33

City of Hesperia
Tax Rate Area
20004, 20033, 20090

0412 - 32



0397
17

0398
04

Ptn. S.W.1/4, Sec. 33
T.4N., R.4W.

Assessor's Map
Book 0412 Page 32
San Bernardino County

REVISED
07/06/10 GW
07/16/10 RU
10/13/10 RU
09/18/12 LH