

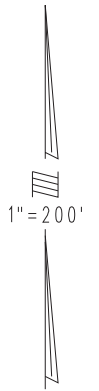
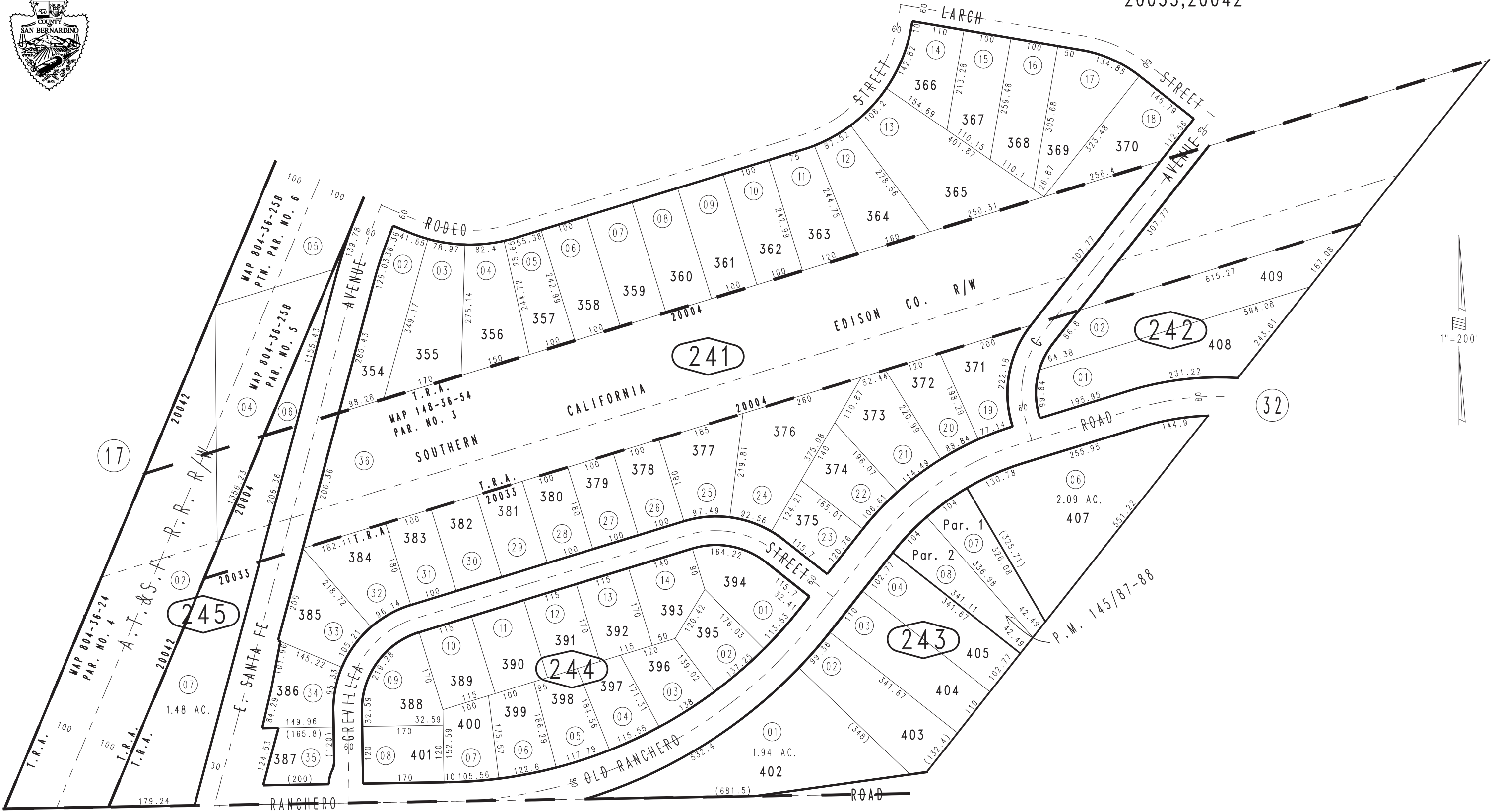
THIS MAP IS FOR THE PURPOSE OF AD VALOREM TAXATION ONLY.



Ptn. Sec.32&33, T.4N.,R.4W., S.B.B.&M.

City of Hesperia  
Tax Rate Area  
20004,20008  
20033,20042

0412 - 24



0397  
14

0397  
17

April 2004

Ptn. Tract No. 5374, M.B. 64/35-51

Parcel Map No. 12264, P.M. 145/87-88

Assessor's Map  
Book 0412 Page 24  
San Bernardino County

REVISED  
07/01/10 GW  
07/16/10 RU  
09/18/12 LH