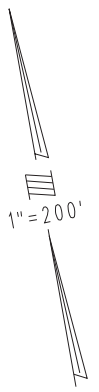


THIS MAP IS FOR THE PURPOSE
OF AD VALOREM TAXATION ONLY.

Ptn. Tract No. 5374, M.B. 64/35-51

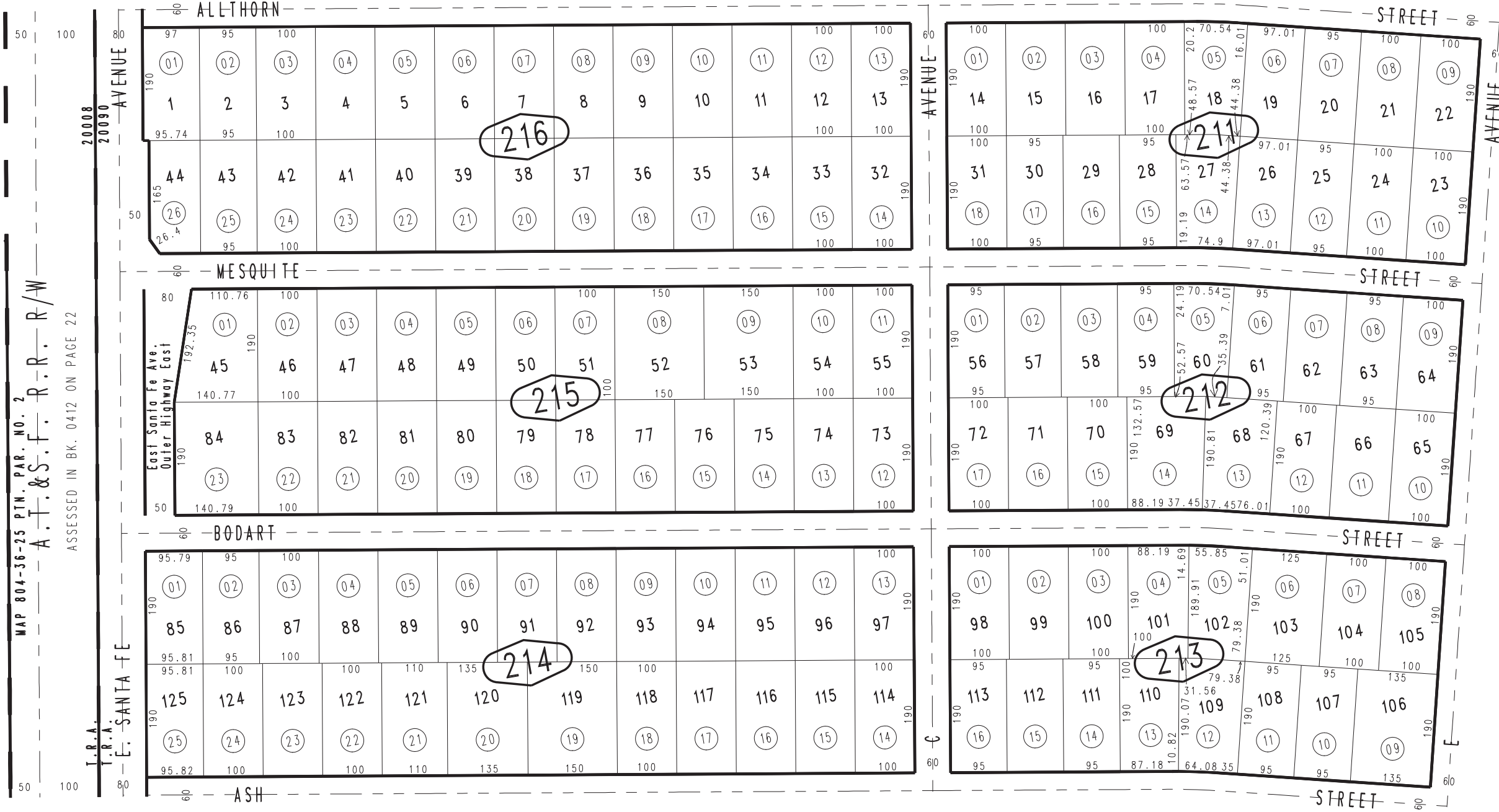
City of Hesperia
Tax Rate Area
20008 20090

0412 - 21



05

12



MAP 804-36-25 P.T.N. PAR. NO. 2
A.T. & S.F. R.R. R/W
ASSESSED IN BK. 0412 ON PAGE 22