

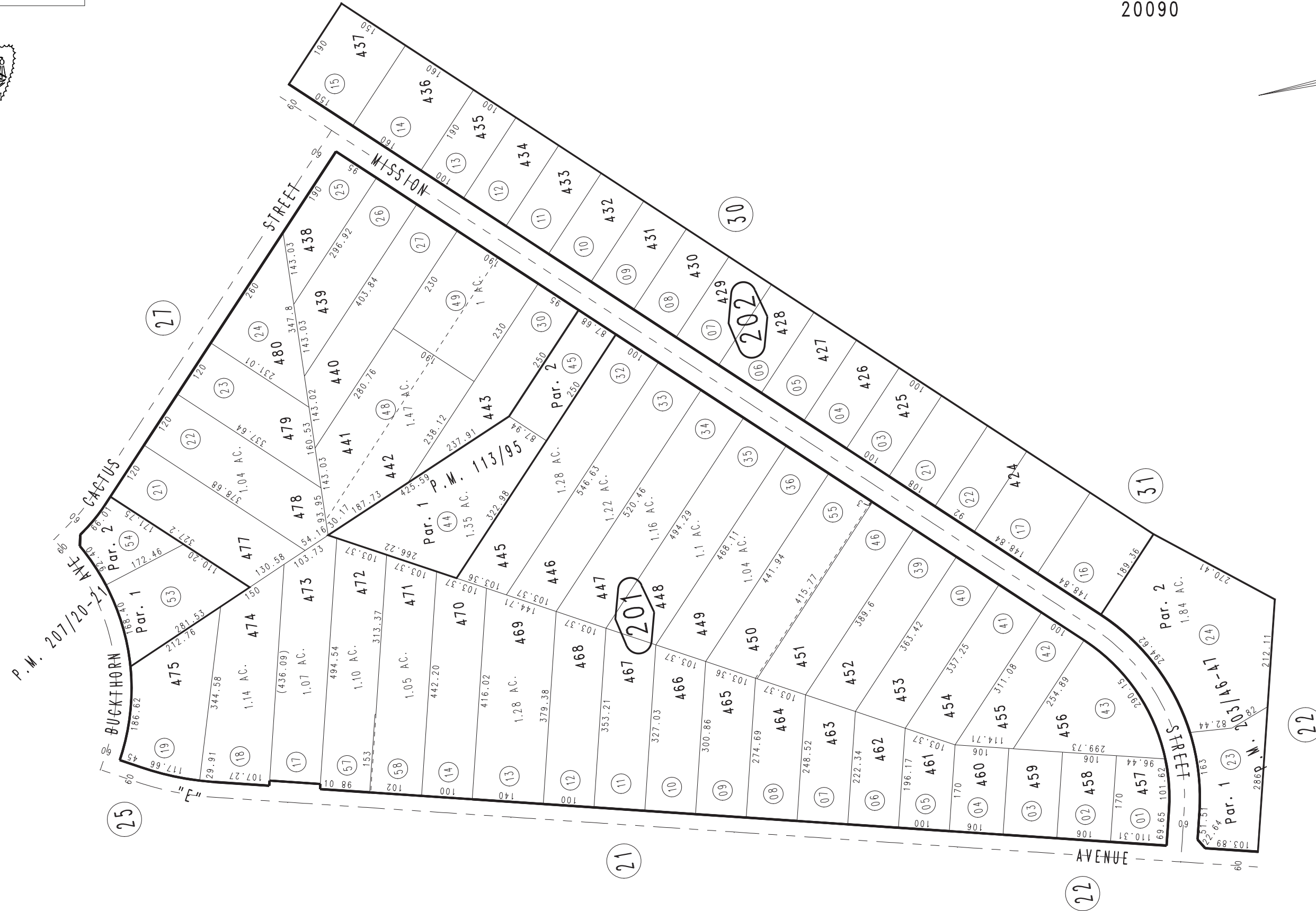
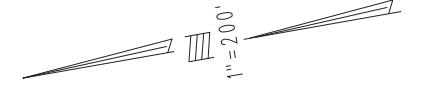
THIS MAP IS FOR THE PURPOSE  
OF AD VALOREM TAXATION ONLY.



Ptn. Tract No. 5374, M.B. 64/35-51

City of Hesperia  
Tax Rate Area  
20090

0412 - 20



Parcel Map No. 16620, P.M. 207/20-21  
Parcel Map No. 16110, P.M. 203/46-47  
Parcel Map No. 10143, P.M. 113/95

April 2004

Ptn. S.E.1/4, Sec. 28  
T.4N., R.4W.

Assessor's Map  
Book 0412 Page 20  
San Bernardino County

REVISED  
01/26/21 KC  
02/09/21 KC