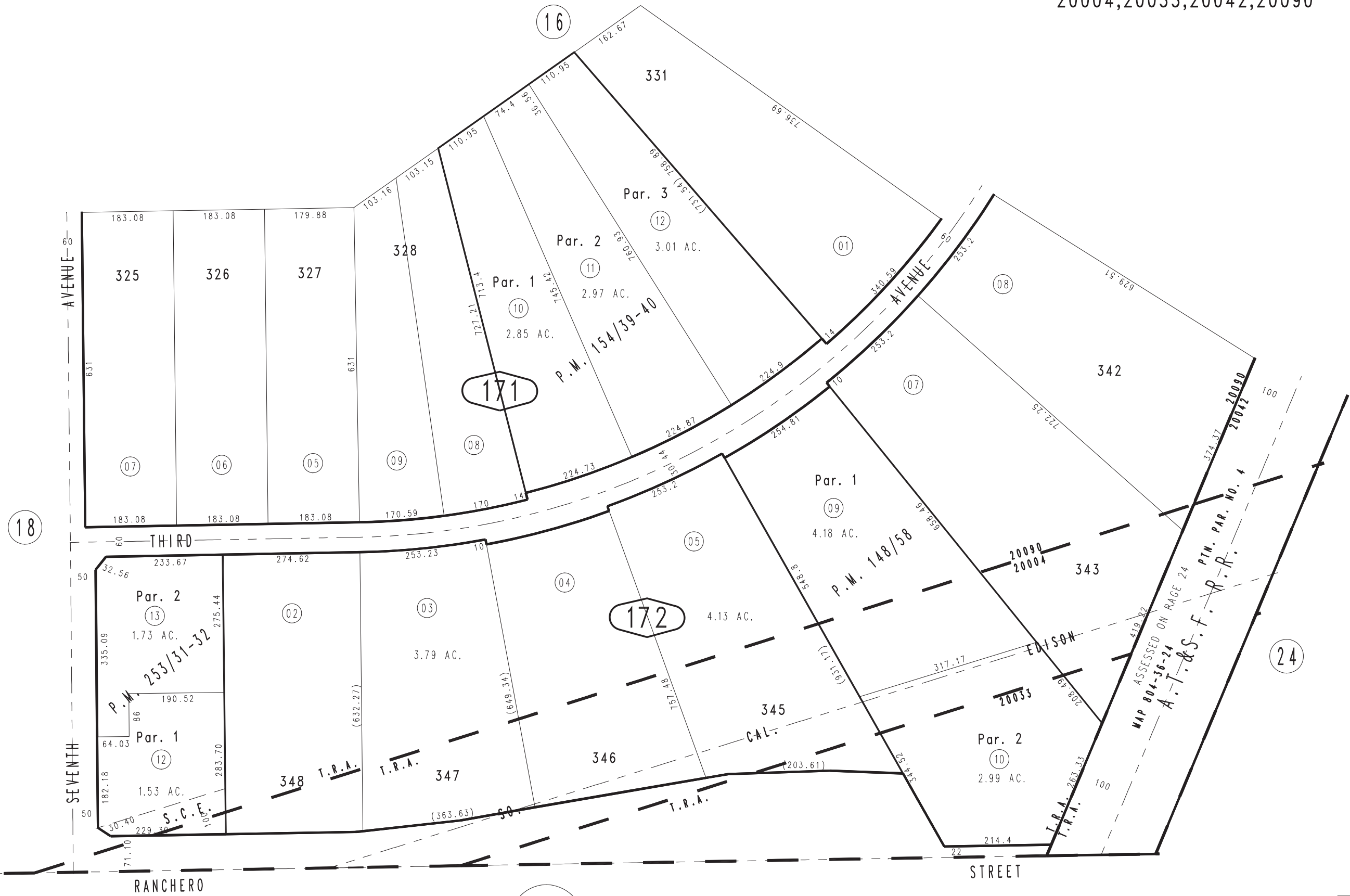


THIS MAP IS FOR THE PURPOSE OF AD VALOREM TAXATION ONLY.

# Ptn. Tract No. 4545, M.B. 57/29-33

City of Hesperia 0412 - 17  
Tax Rate Area  
20004,20033,20042,20090



N.1/4 COR. SEC.5  
T.3N.,R.4W.

0397  
14

Parcel Map No. 19792, P.M. 253/31-32  
Parcel Map No. 12254, P.M. 148/58

Ptn. S.W.1/4, Sec. 32  
T.4N., R.4W.

Assessor's Map  
Book 0412 Page 17  
San Bernardino County

REVISED  
01/07/20 RU

April 2004