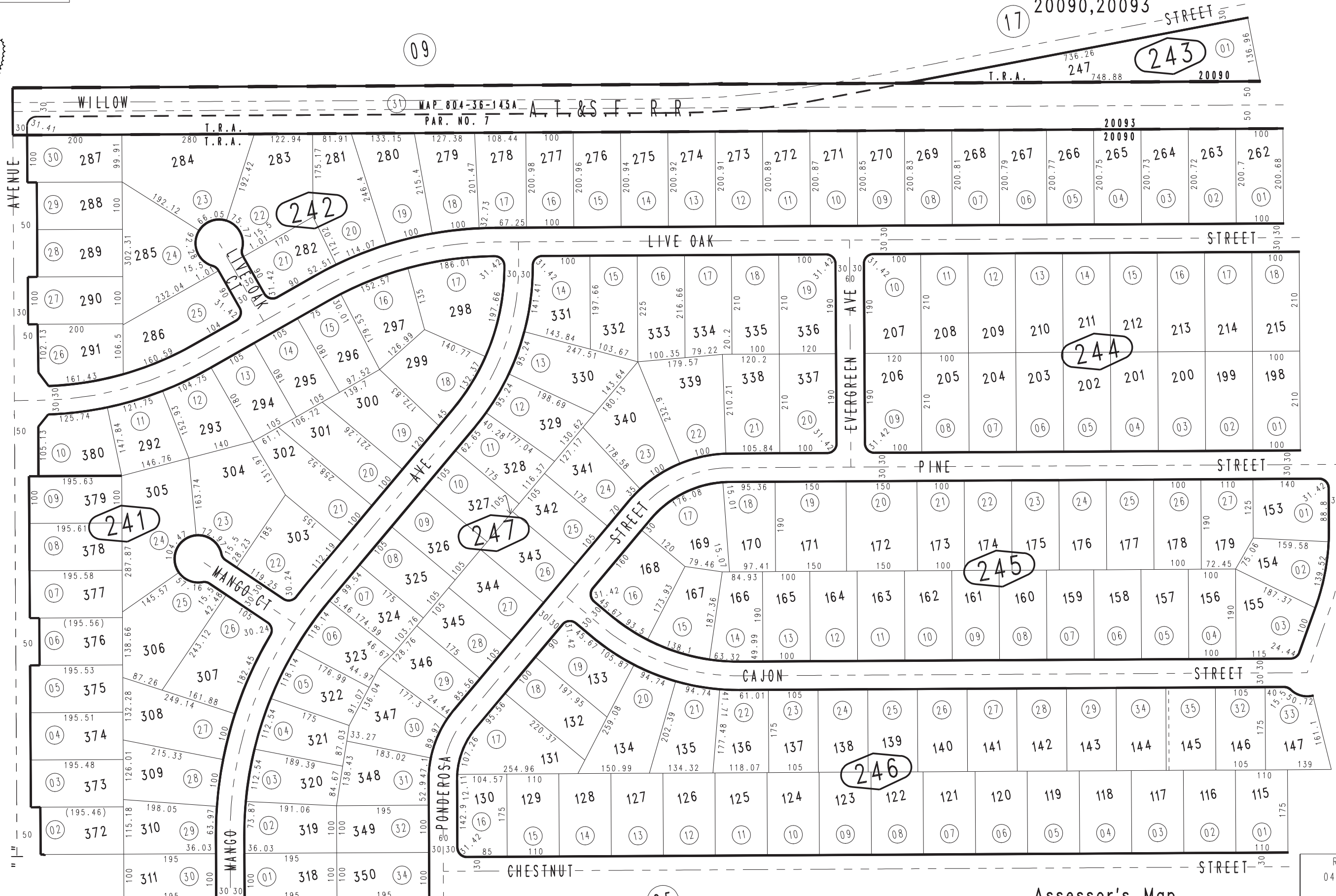


THIS MAP IS FOR THE PURPOSE OF AD VALOREM TAXATION ONLY.

Ptn. Tract No. 5206, M.B. 62/51-52

City of Hesperia
Tax Rate Area
20090, 20093

0411 - 24



0410
07

0410
12

March 2004

Ptn. Lot 351

25

Ptn. N.W. 1/4, Sec. 23
T.4N., R.4W.

Assessor's Map
Book 0411 Page 24
San Bernardino County

REVISED
04/28/23 XM