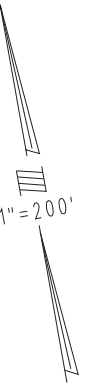


THIS MAP IS FOR THE PURPOSE OF AD VALOREM TAXATION ONLY.

Ptn. Tract No. 5247, M.B. 62/62-63

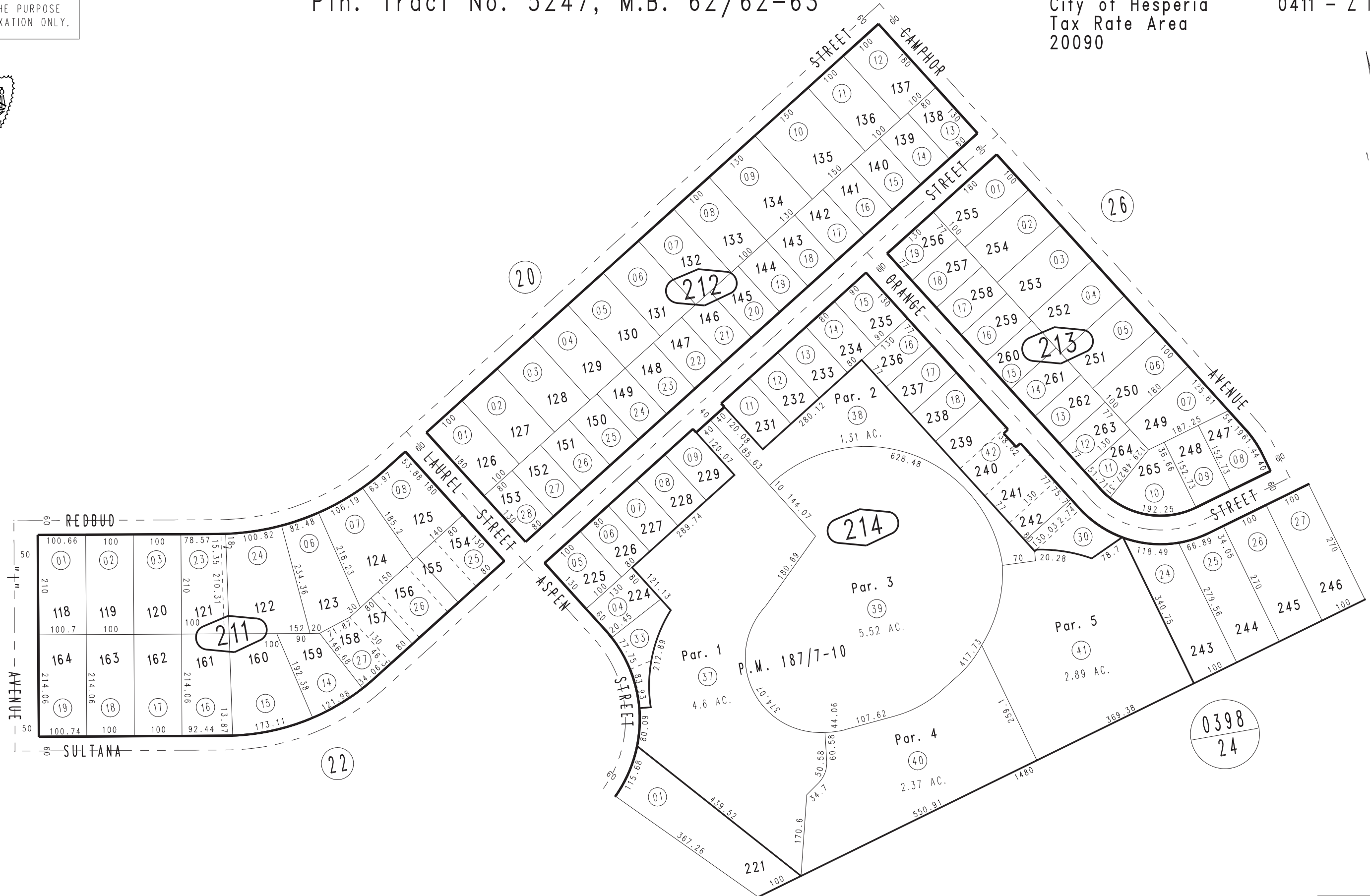
City of Hesperia
Tax Rate Area
20090

0411 - 21



0410
19

0398
24



March 2004

Parcel Map No. 15147, P.M. 187/7-10

Ptn. N.E.1/4, Sec. 27
T.4N., R.4W.

Assessor's Map
Book 0411 Page 21
San Bernardino County

REVISED
07/15/19 GW