

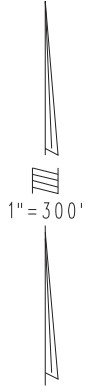
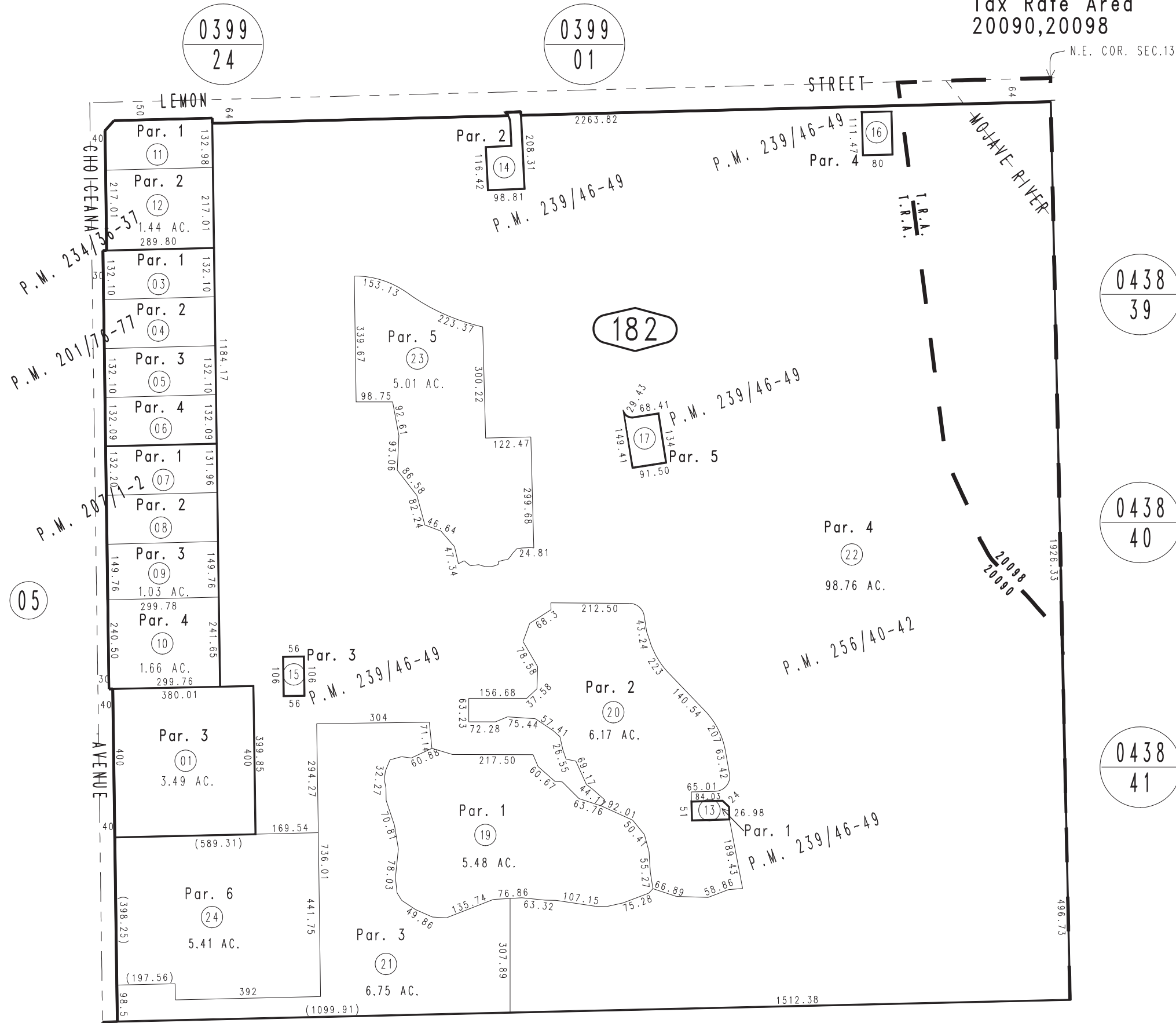
THIS MAP IS FOR THE PURPOSE OF AD VALOREM TAXATION ONLY.



Parcel Map No. 16160, P.M. 201/76-77

City of Hesperia
Tax Rate Area
20090,20098

0411 - 18



Parcel Map No. 20108, P.M. 256/40-42
 Parcel Map No. 19265, P.M. 239/46-49
 Parcel Map No. 18403, P.M. 234/36-37
 Parcel Map No. 16360, P.M. 207/1-2

JANUARY 2012 LH

19

Ptn. NE1/4, Sec. 13
T.4N., R.4W.

Assessor's Map
Book 0411 Page 18
San Bernardino County

REVISED
07/28/21 KA