

THIS MAP IS FOR THE PURPOSE OF AD VALOREM TAXATION ONLY.

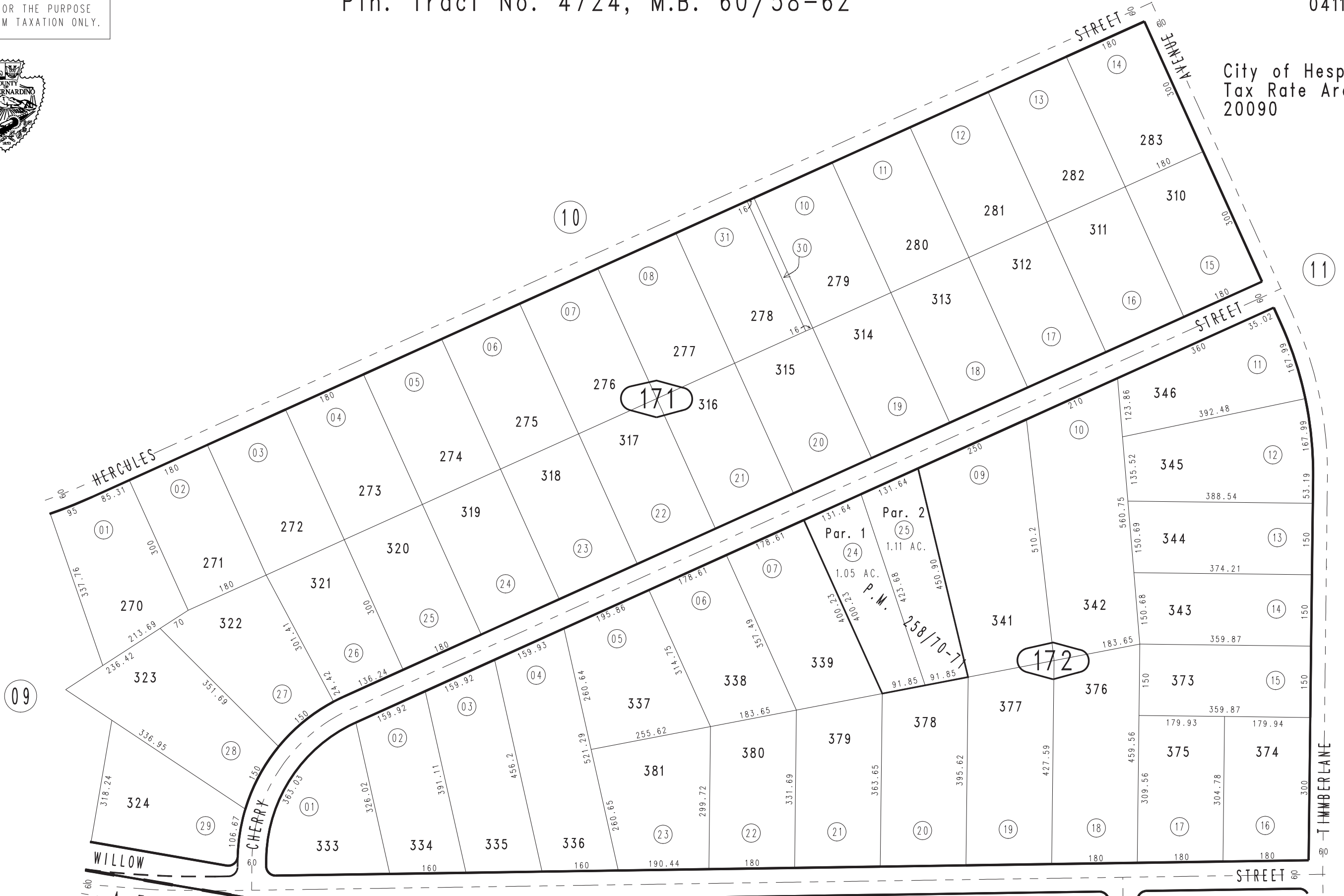
Ptn. Tract No. 4724, M.B. 60/58-62

0411 - 17



City of Hesperia
Tax Rate Area
20090

1" = 200'



A.T.&S.F. R.R.
ASSESSED ON PAGE 24

March 2004

Parcel Map No. 20038, P.M. 258/70-71

Assessor's Map
Book 0411 Page 17
San Bernardino County

REVISED
06/16/22 AP