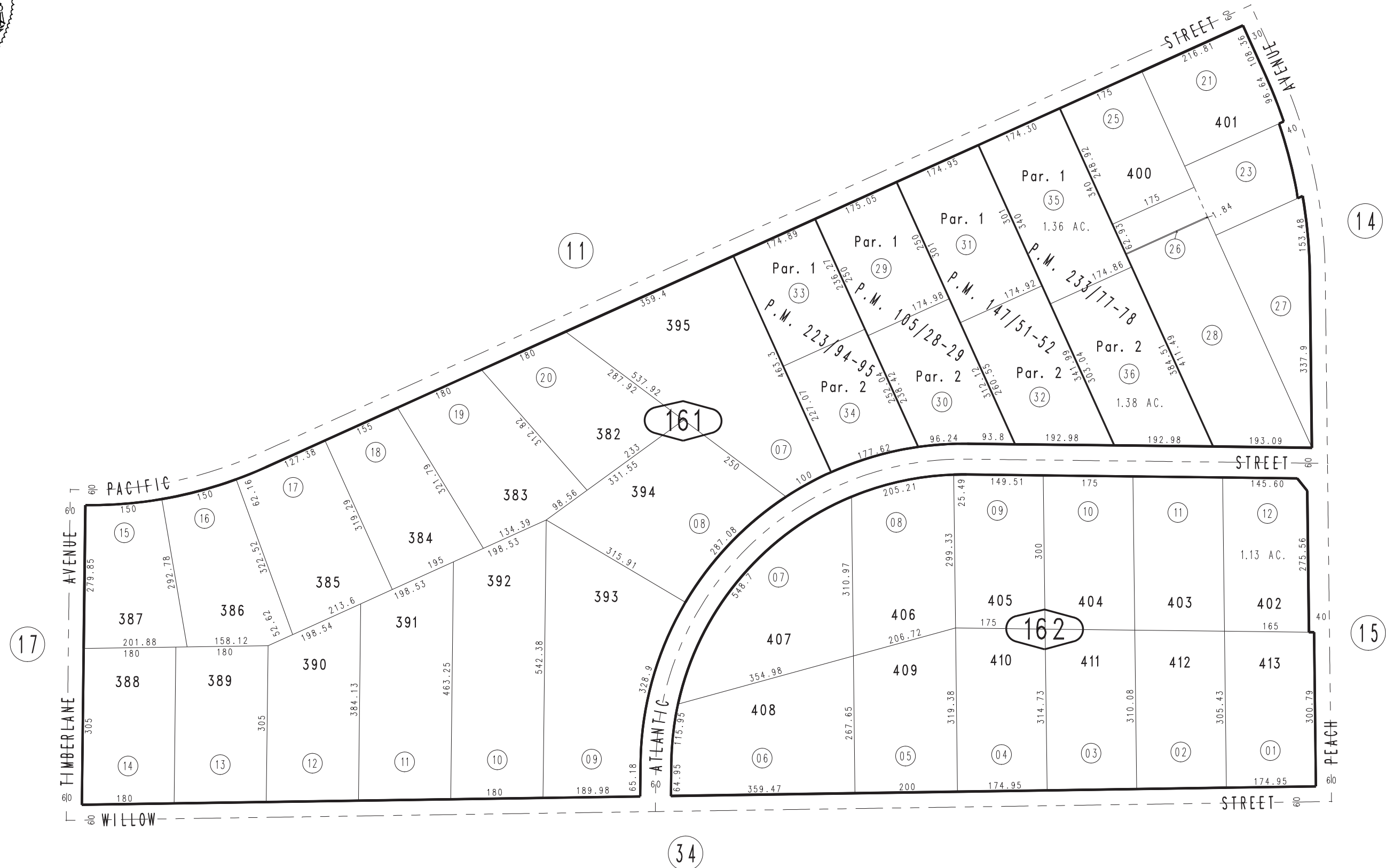


THIS MAP IS FOR THE PURPOSE  
OF AD VALOREM TAXATION ONLY.

# Ptn. Tract No. 4724, M.B. 60/58-62

City of Hesperia  
Tax Rate Area  
20090

0411 - 16



March 2004

Parcel Map No. 17744, P.M. 233/77-78  
 Parcel Map No. 17241, P.M. 223/94-95  
 Parcel Map No. 12666, P.M. 147/51-52  
 Parcel Map No. 9849, P.M. 105/28-29

Ptn. S.E.1/4, Sec. 14  
 T.4N., R.4W.

Assessor's Map  
 Book 0411 Page 16  
 San Bernardino County

REVISED  
 06/17/16 GW