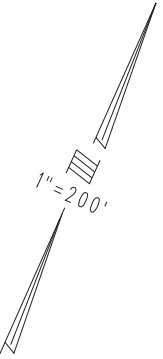
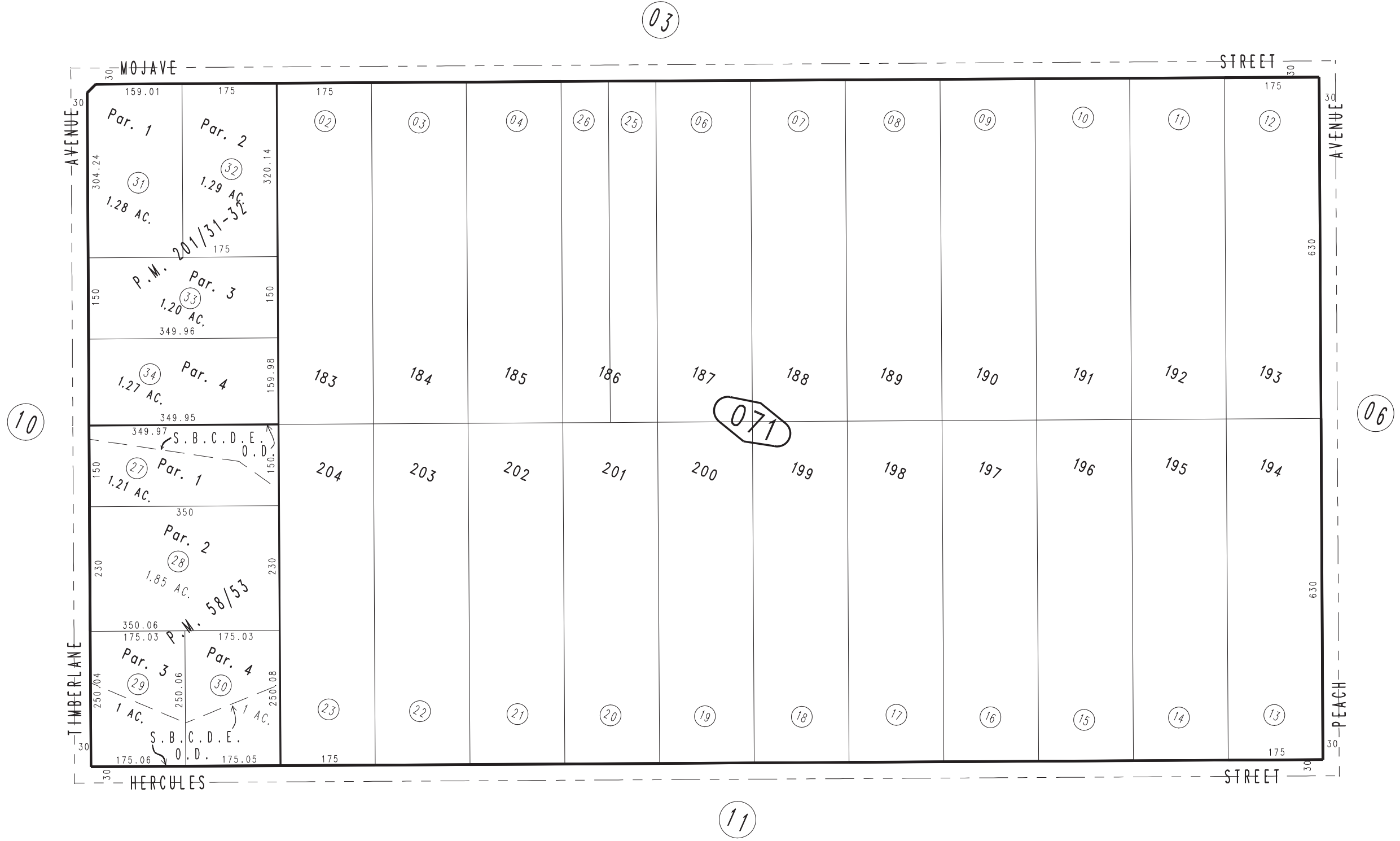


THIS MAP IS FOR THE PURPOSE OF AD VALOREM TAXATION ONLY.

Ptn. Tract No. 4724, M.B. 60/58-62

City of Hesperia  
Tax Rate Area  
20090

0411 - 07



March 2004

Parcel Map No. 16007, P.M. 201/31-32  
Parcel Map No. 6109, P.M. 58/53

Ptn. N. 1/2, Sec. 14  
T.4N., R.4W.

Assessor's Map  
Book 0411 Page 07  
San Bernardino County

REVISED  
02/21/07 RU