

THIS MAP IS FOR THE PURPOSE
OF AD VALOREM TAXATION ONLY.

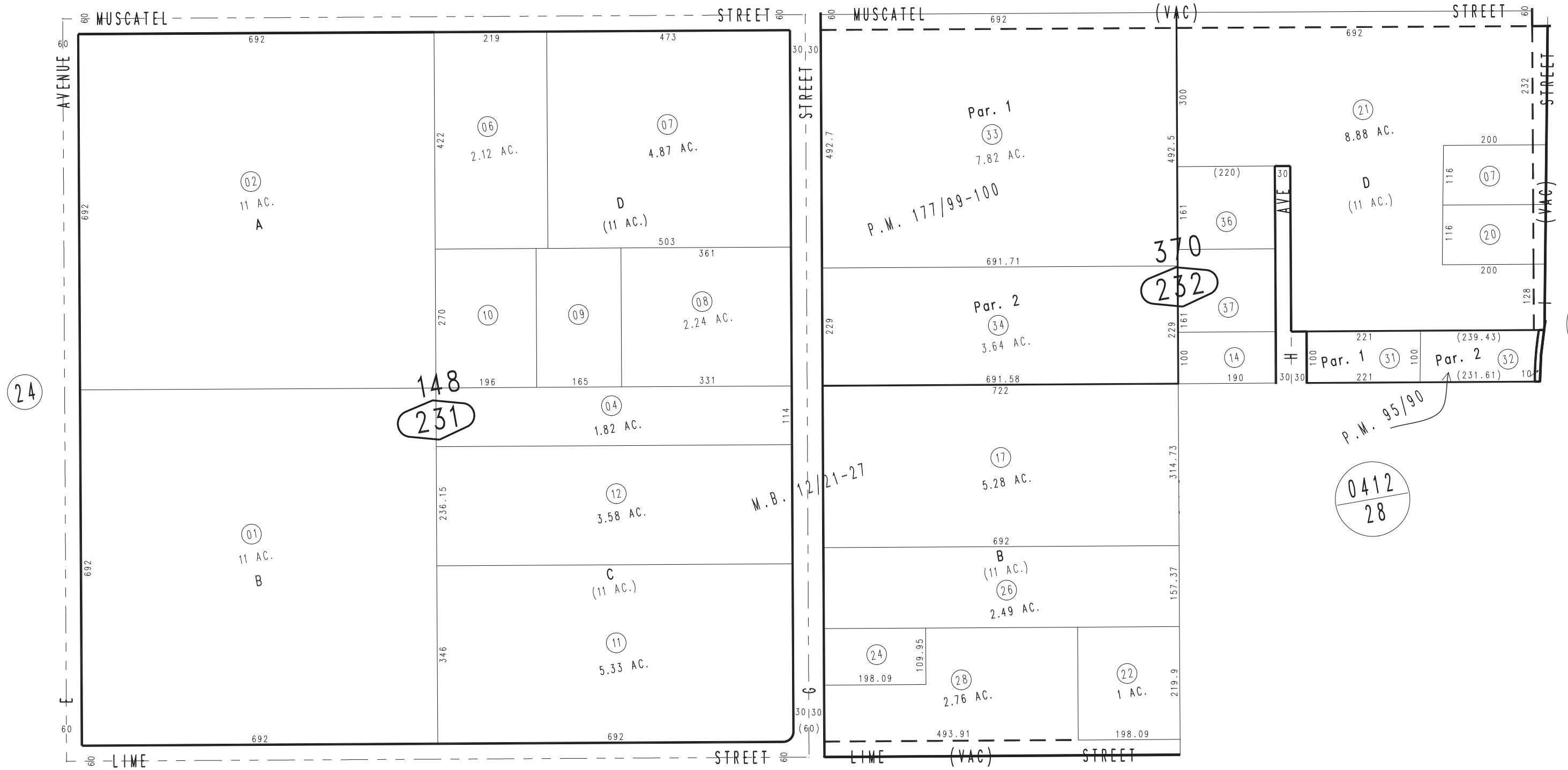
Ptn. Map No. 1 of Hesperia M.B. 12/21-27

City of Hesperia
Tax Rate Area
20090

0410 - 23



1" = 200'



0412
26

Parcel Map No. 14488, P.M. 177/99-100
Parcel Map No. 7559, P.M. 95/90

April 2004

0412
28

Ptn. N.W.1/4, Sec. 27
T.4N., R.4W.

Assessor's Map
Book 0410 Page 23
San Bernardino County

REVISED
07/20/21 KA