

THIS MAP IS FOR THE PURPOSE
OF AD VALOREM TAXATION ONLY.

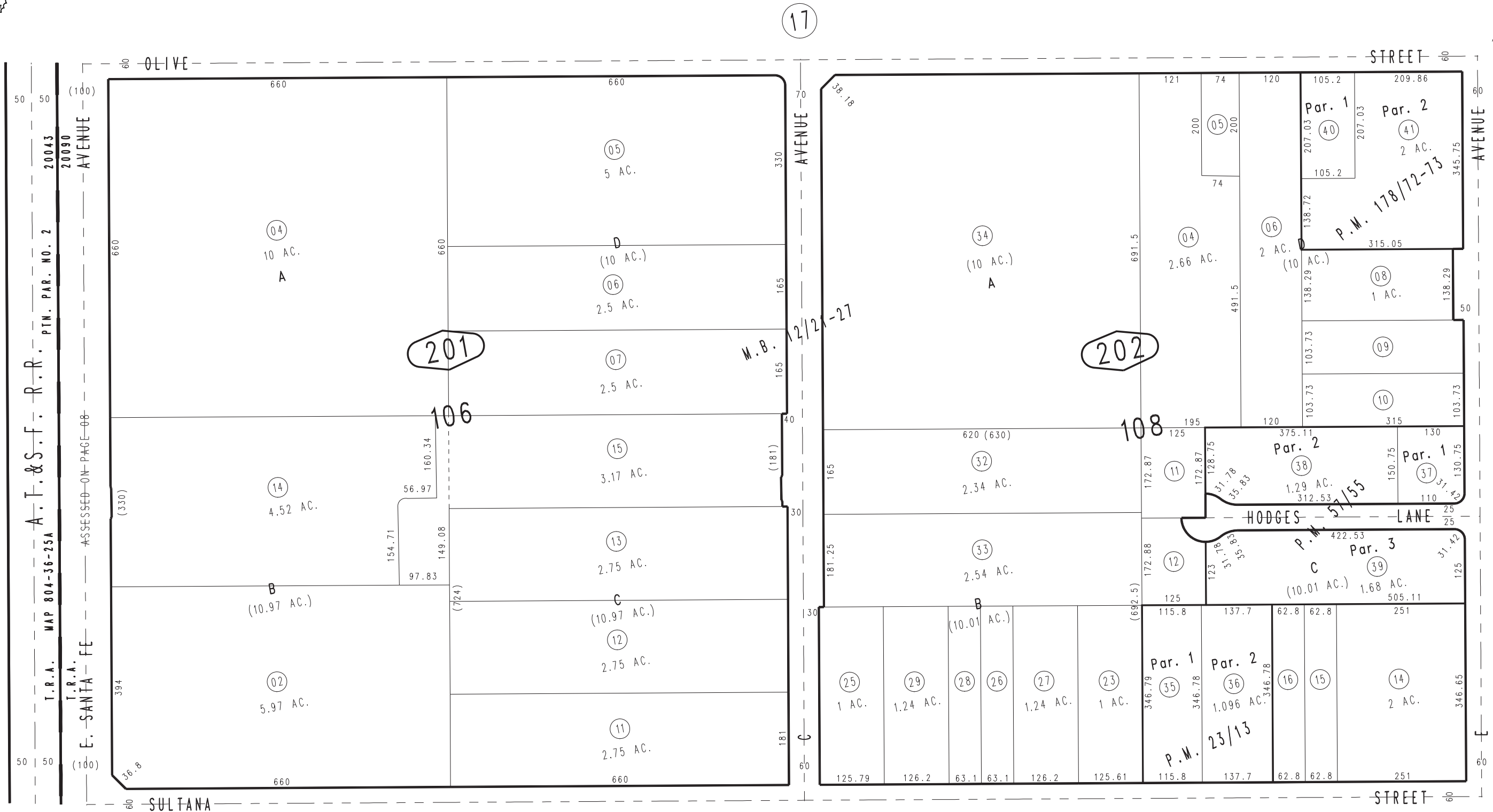
Ptn. Map No. 1 of Hesperia
M.B. 12/21-27

City of Hesperia
Tax Rate Area
20090,20043

0410 - 20



0413
16



1"=200'

April 2004

Parcel Map No. 14776, P.M. 178/72-73
 Parcel Map No. 5679, P.M. 57/55
 Parcel Map No. 2646, P.M. 23/13

Ptn. S.1/2, Sec. 24
 T.4N., R.4W.

Assessor's Map
 Book 0410 Page 20
 San Bernardino County

REVISED
 07/23/07 GW
 01/30/08 RU
 03/11/08 TY
 06/01/09 KC