

THIS MAP IS FOR THE PURPOSE
OF AD VALOREM TAXATION ONLY.

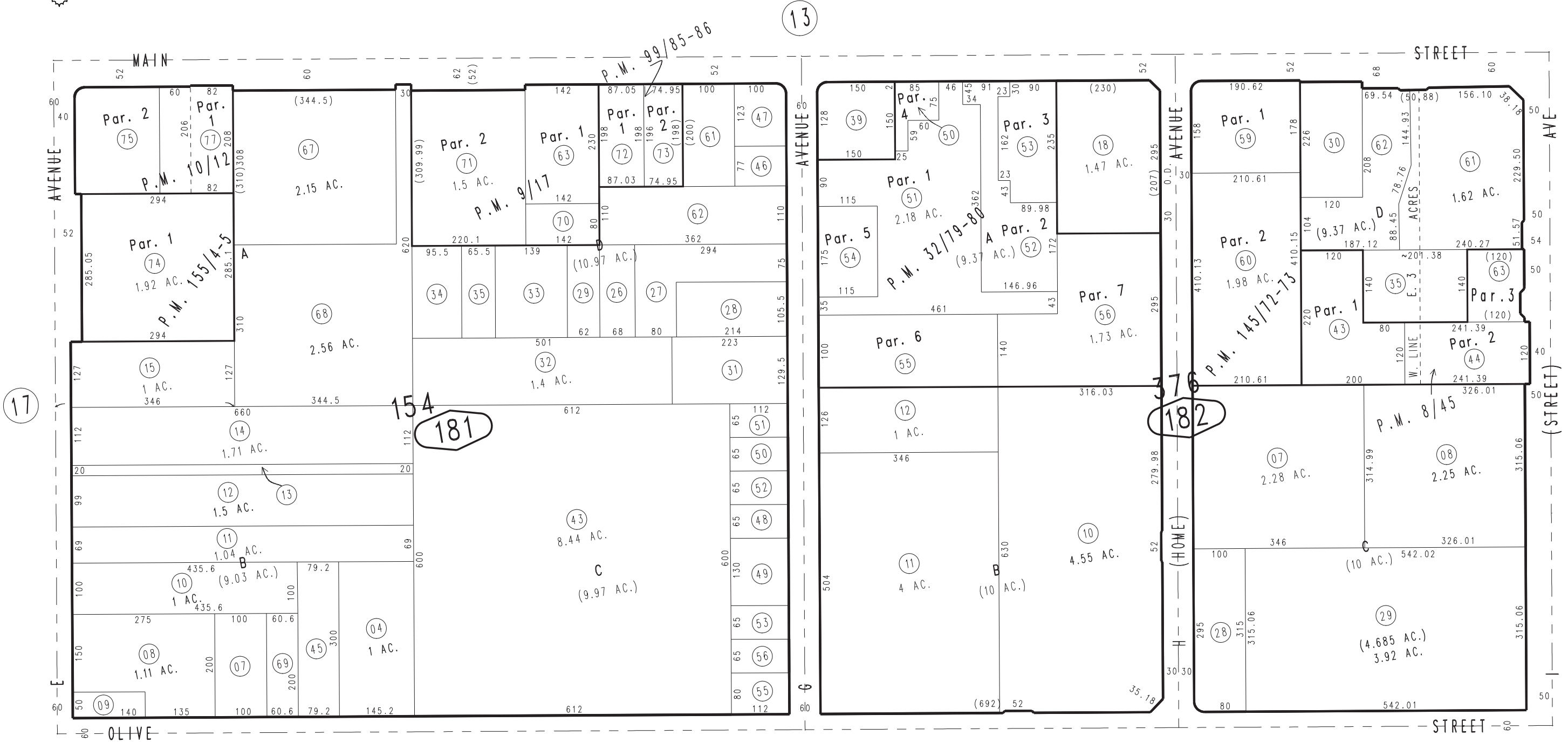
Ptn. Map No. 1 of Hesperia M.B. 12/21-27

City of Hesperia
Tax Rate Area
20090

0410 - 18



1" = 200'



17

154
181

182

0411
20

19

- Parcel Map No. 12923, P.M. 155/4-5
- Parcel Map No. 11778, P.M. 145/72-73
- Parcel Map No. 9344, P.M. 99/85-86
- Parcel Map No. 3593, P.M. 32/79-80
- Parcel Map No. 1210, P.M. 10/12
- Parcel Map No. 1083, P.M. 9/17
- Ptn. Parcel Map No. 838, P.M. 8/45

April 2004

Assessor's Map
Book 0410 Page 18
San Bernardino County

REVISED
08/22/22 AP