

THIS MAP IS FOR THE PURPOSE OF AD VALOREM TAXATION ONLY.

# Ptn. Map No. 1 of Hesperia M.B. 12/21-27

City of Hesperia  
Tax Rate Area  
20090,20043

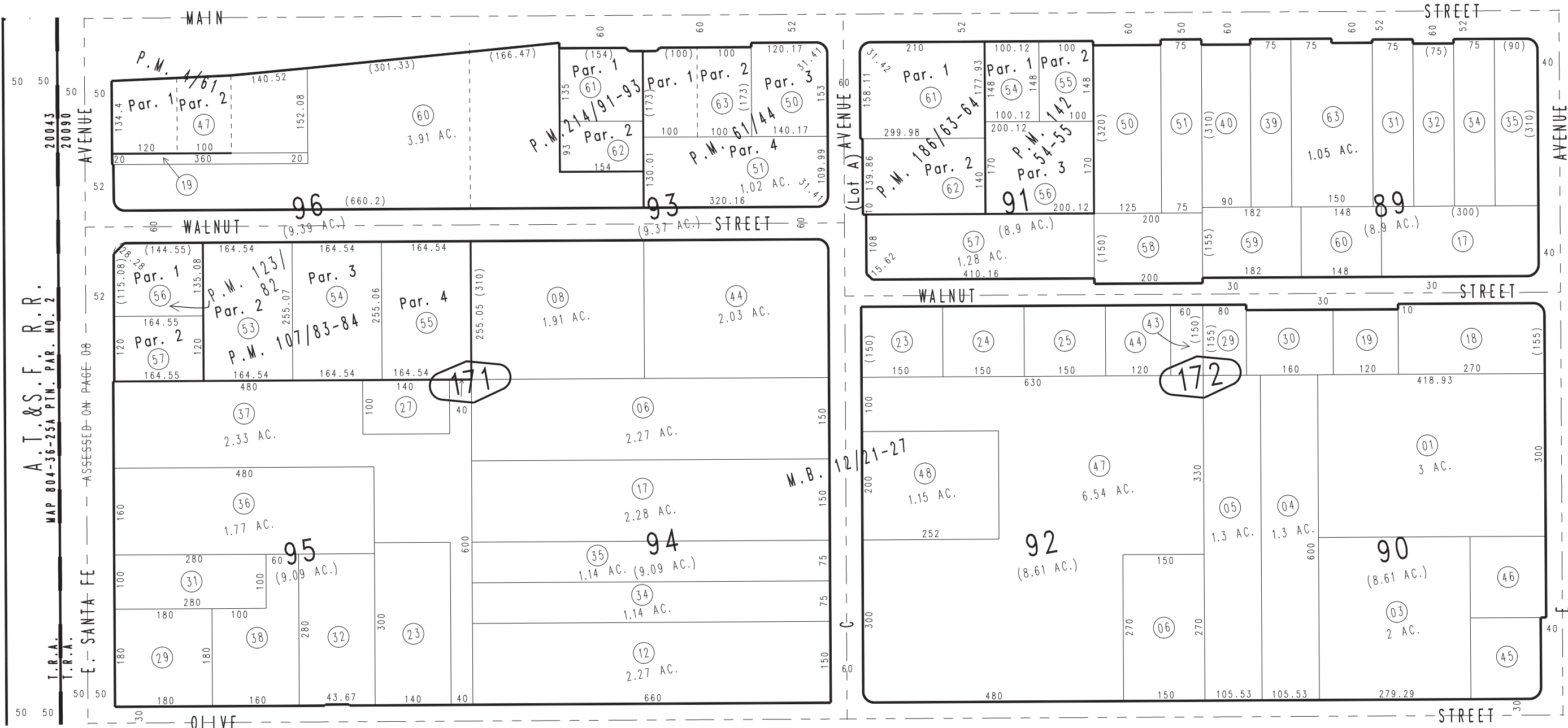
0410 - 17



1" = 200'

0413  
07

0413  
15



A. T. & S. F. R. R.  
MAP 804-36-25A PTN. PAR. NO. 2  
T.R.A. T.R.A.  
E. SANTA FE  
-- ASSESSED ON PAGE 08

- Parcel Map No. 16931, P.M. 214/91-93
- Parcel Map No. 12197, P.M. 142/54-55
- Parcel Map No. 15239, P.M. 186/63-64
- Parcel Map No. 11153, P.M. 123/82
- Parcel Map No. 9971, P.M. 107/83-84
- Parcel Map No. 5483, P.M. 61/44
- Parcel Map No. 469, P.M. 4/61

April 2004

Ptn. N.W. 1/4, Sec. 21  
T.4N., R.4W.

Assessor's Map  
Book 0410 Page 17  
San Bernardino County

REVISED  
08/26/19 KA