

THIS MAP IS FOR THE PURPOSE OF AD VALOREM TAXATION ONLY.

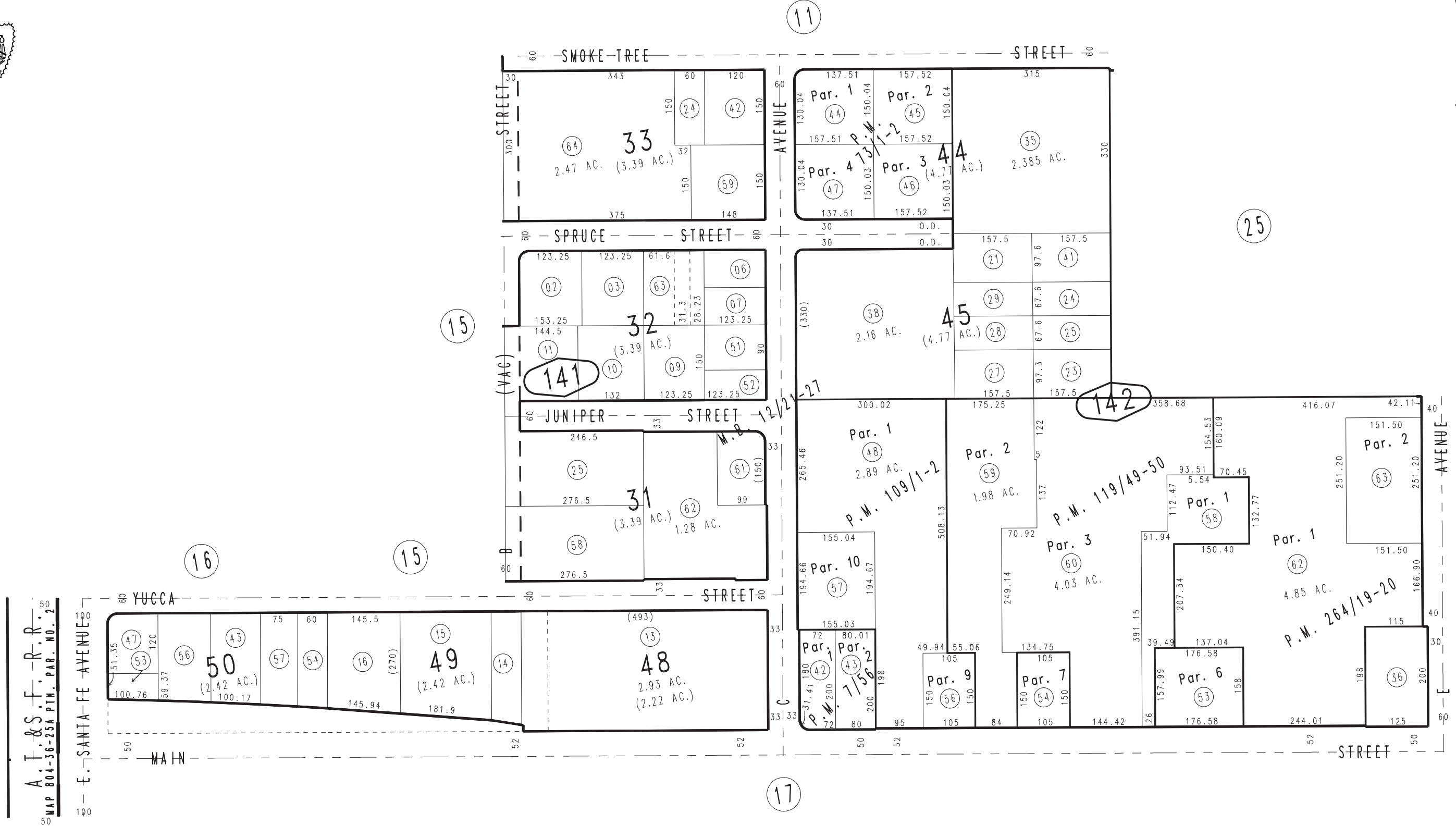
# Ptn. Map No. 1 of Hesperia M.B. 12/21-27

City of Hesperia  
Tax Rate Area  
20090

0410 - 14



1" = 200'



Parcel Map No. 20627, P.M. 264/19-20  
 Ptn. Parcel Map No. 10746, P.M. 119/49-50  
 Ptn. Parcel Map No. 9938, P.M. 109/1-2  
 Parcel Map No. 7274, P.M. 73/1-2  
 Parcel Map No. 784, P.M. 7/56

April 2004

Ptn. N.E.1/4, Sec. 21  
T.4N., R.4W.

Assessor's Map  
Book 0410 Page 14  
San Bernardino County

REVISED  
01/30/25 KC