

THIS MAP IS FOR THE PURPOSE OF AD VALOREM TAXATION ONLY.

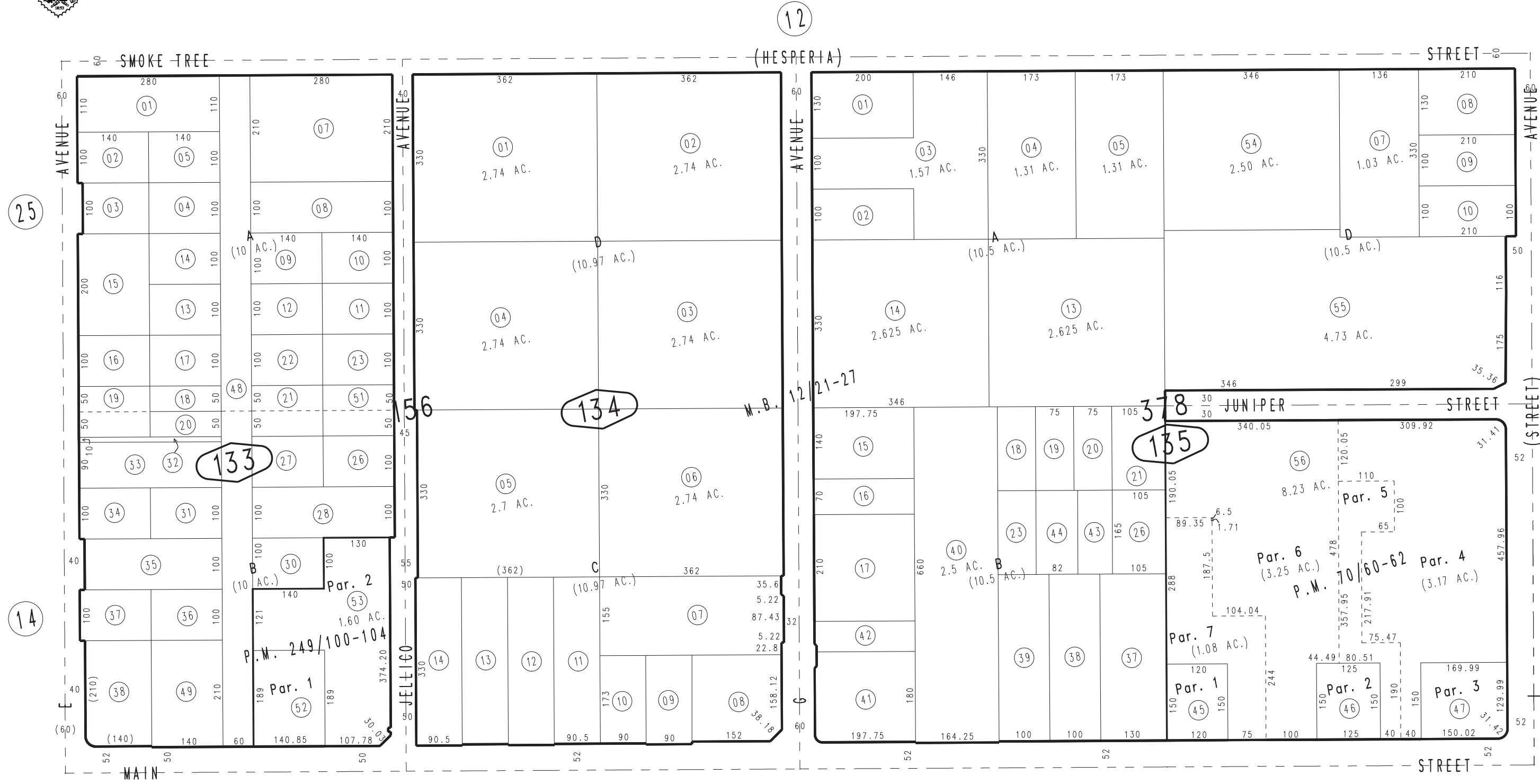
Ptn. Map No. 1 of Hesperia M.B. 12/21-27

City of Hesperia
Tax Rate Area
20090

0410 - 13



1" = 200'



0411
25

0411
29

April 2004

Parcel Map No. 19857, P.M. 249/100-104
Parcel Map No. 6803, P.M. 70/60-62

Ptn. N.W.1/4 Sec.22
T.4N.,R.4W.

Assessor's Map
Book 0410 Page 13
San Bernardino County

REVISED
03/08/17 GW
05/22/18 KA
10/09/18 BK-MC