

THIS MAP IS FOR THE PURPOSE OF AD VALOREM TAXATION ONLY.

# Ptn. Map No. 1 of Hesperia M.B. 12/21-27

City of Hesperia  
Tax Rate Area  
20008,20090

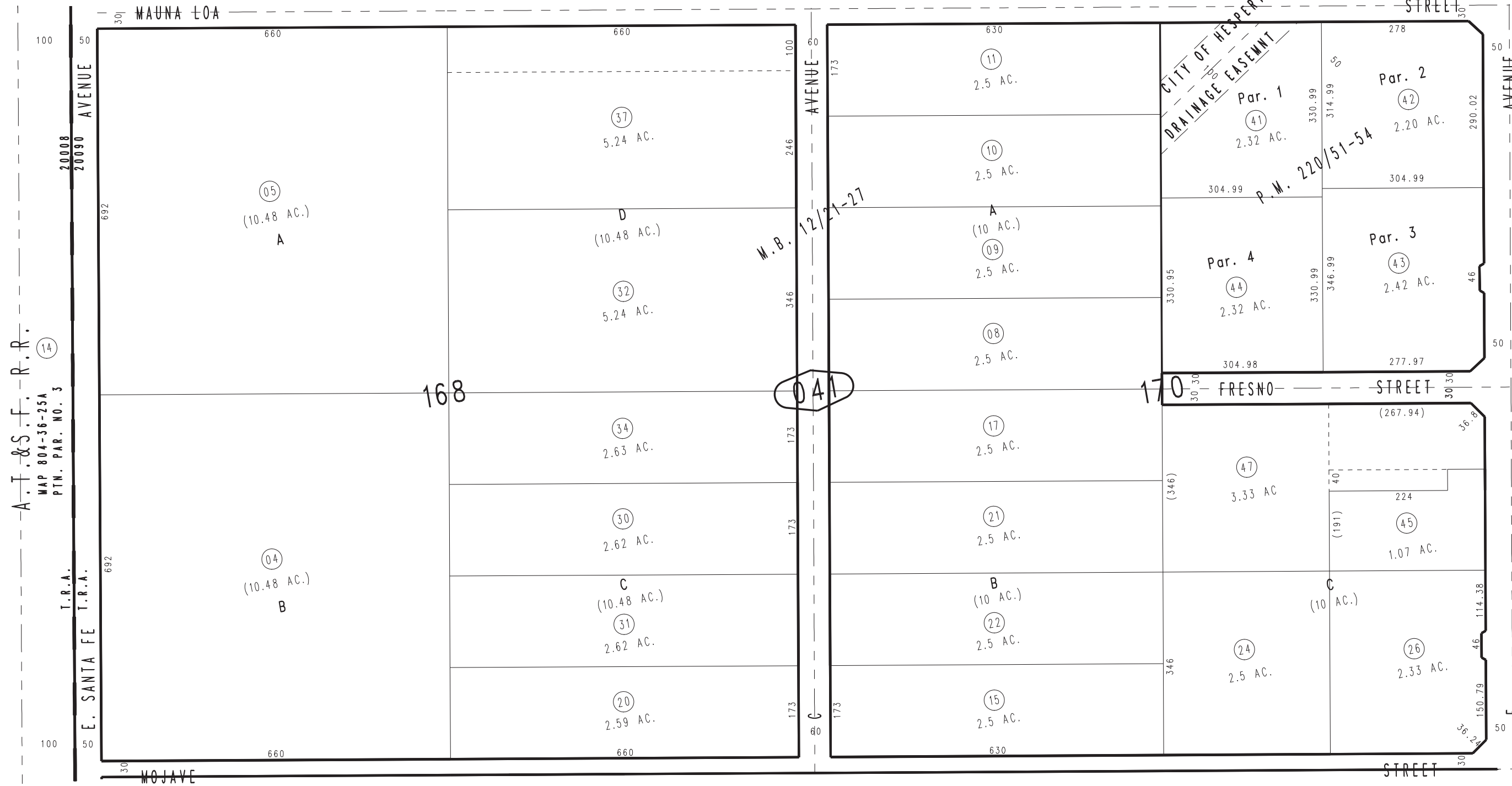
0410 - 04



1" = 200'

0414  
22

0414  
21



April 2004

Parcel Map No. 16304, P.M. 220/51-54

05

Ptn. N.E.1/4, Sec. 27  
T.4N., R.4W.

Assessor's Map  
Book 0410 Page 04  
San Bernardino County

REVISED  
08/15/13 KC