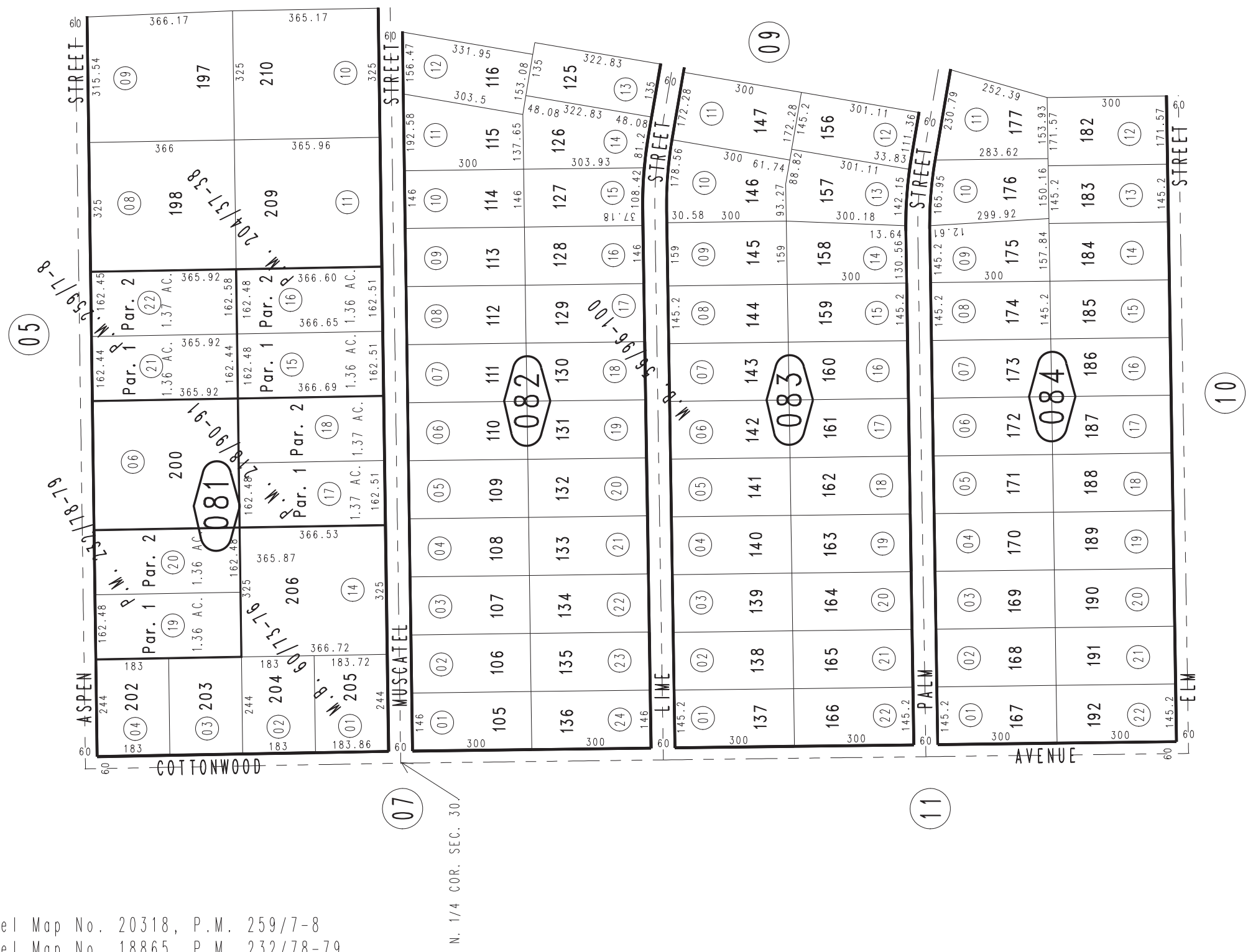
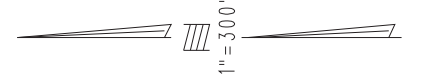


THIS MAP IS FOR THE PURPOSE OF AD VALOREM TAXATION ONLY.

Ptn. Tract No. 4575, M.B. 56/96-100

City of Hesperia
Tax Rate Area
20094

0409-08



March 2004

Parcel Map No. 20318, P.M. 259/7-8
 Parcel Map No. 18865, P.M. 232/78-79
 Parcel Map No. 17168, P.M. 218/90-91
 Parcel Map No. 16335, P.M. 204/37-38
 Ptn. Tract No. 4957, M.B. 60/73-76

Ptn. S.E.1/4, Sec. 19
 T.4N., R.4W.

Assessor's Map
 Book 0409 Page 08
 San Bernardino County

REVISED
 07/20/22 AP