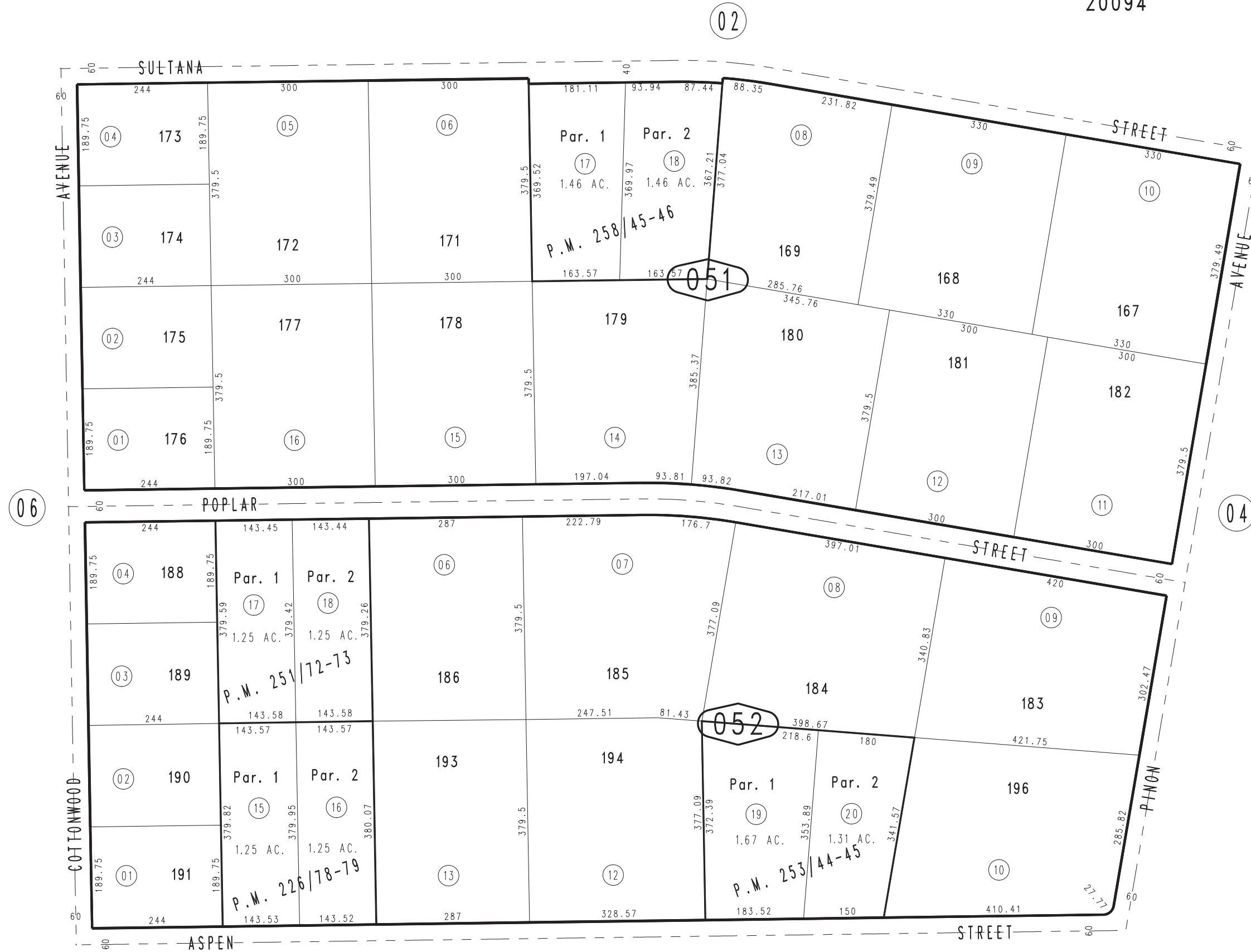


THIS MAP IS FOR THE PURPOSE
OF AD VALOREM TAXATION ONLY.

Ptn. Tract No. 4957, M.B. 60/73-76

City of Hesperia
Tax Rate Area
20094

0409-05



Parcel Map No. 20296, P.M. 258/45-46
 Parcel Map No. 20086, P.M. 253/44-45
 Parcel Map No. 19965, P.M. 251/72-73
 Parcel Map No. 17128, P.M. 226/78-79

March 2004

Ptn. S.E.1/4, Sec. 19
T.4N., R.4W.

Assessor's Map
Book 0409 Page 05
San Bernardino County

REVISED
04/29/22 AP