

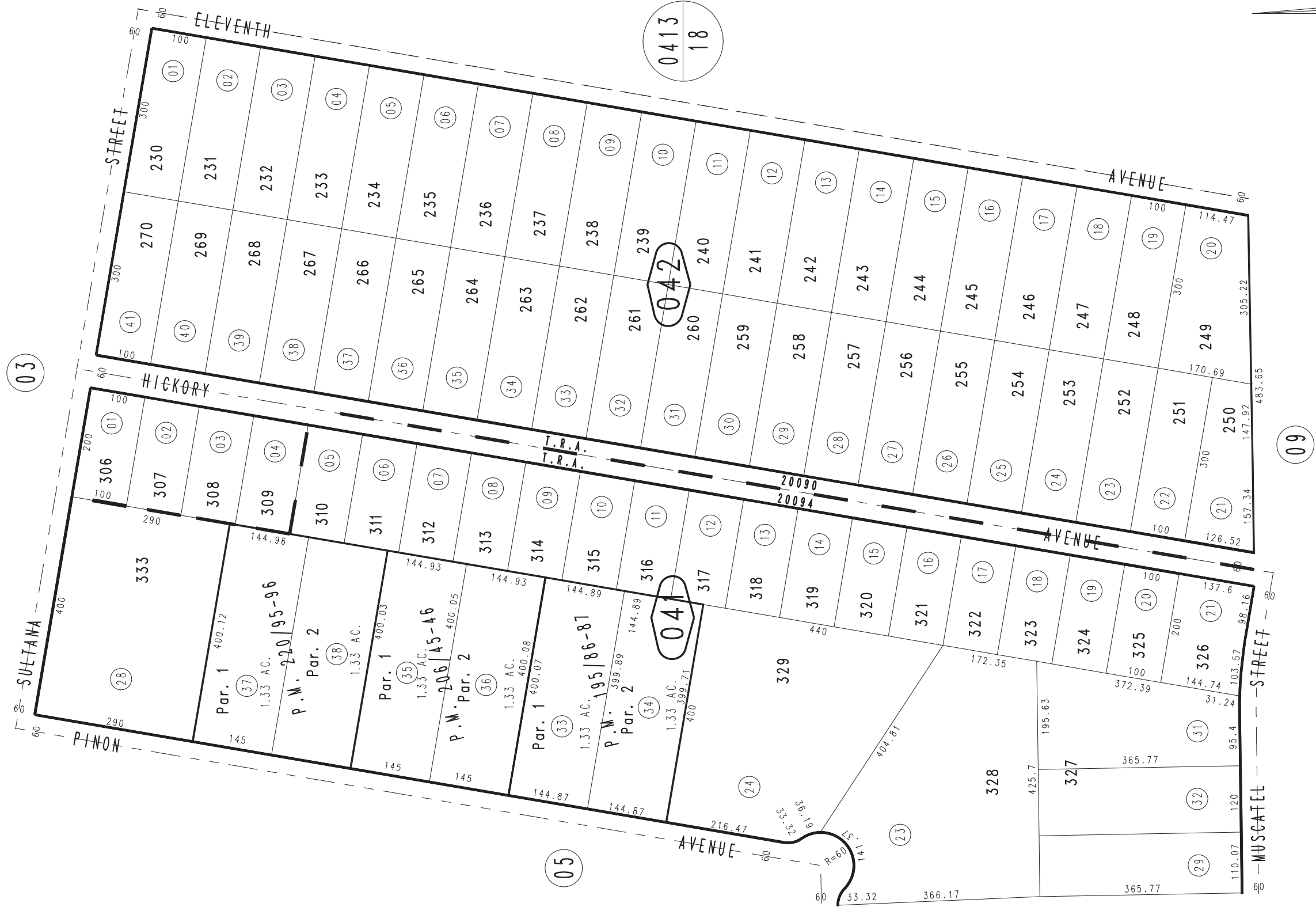
THIS MAP IS FOR THE PURPOSE  
OF AD VALOREM TAXATION ONLY.



Ptn. Tract No. 4957, M.B. 60/73-76

City of Hesperia  
Tax Rate Area  
20090,20094

0409-04



Parcel Map No. 17175, P.M. 220/95-96  
Parcel Map No. 16311, P.M. 206/45-46  
Parcel Map No. 15752, P.M. 195/86-87

March 2004

Ptn. S.E. 1/4, Sec. 19  
T.4N., R.4W.

Assessor's Map  
Book 0409 Page 04  
San Bernardino County

REVISED  
08/01/05 KC  
07/09/07 RU