

THIS MAP IS FOR THE PURPOSE OF AD VALOREM TAXATION ONLY.

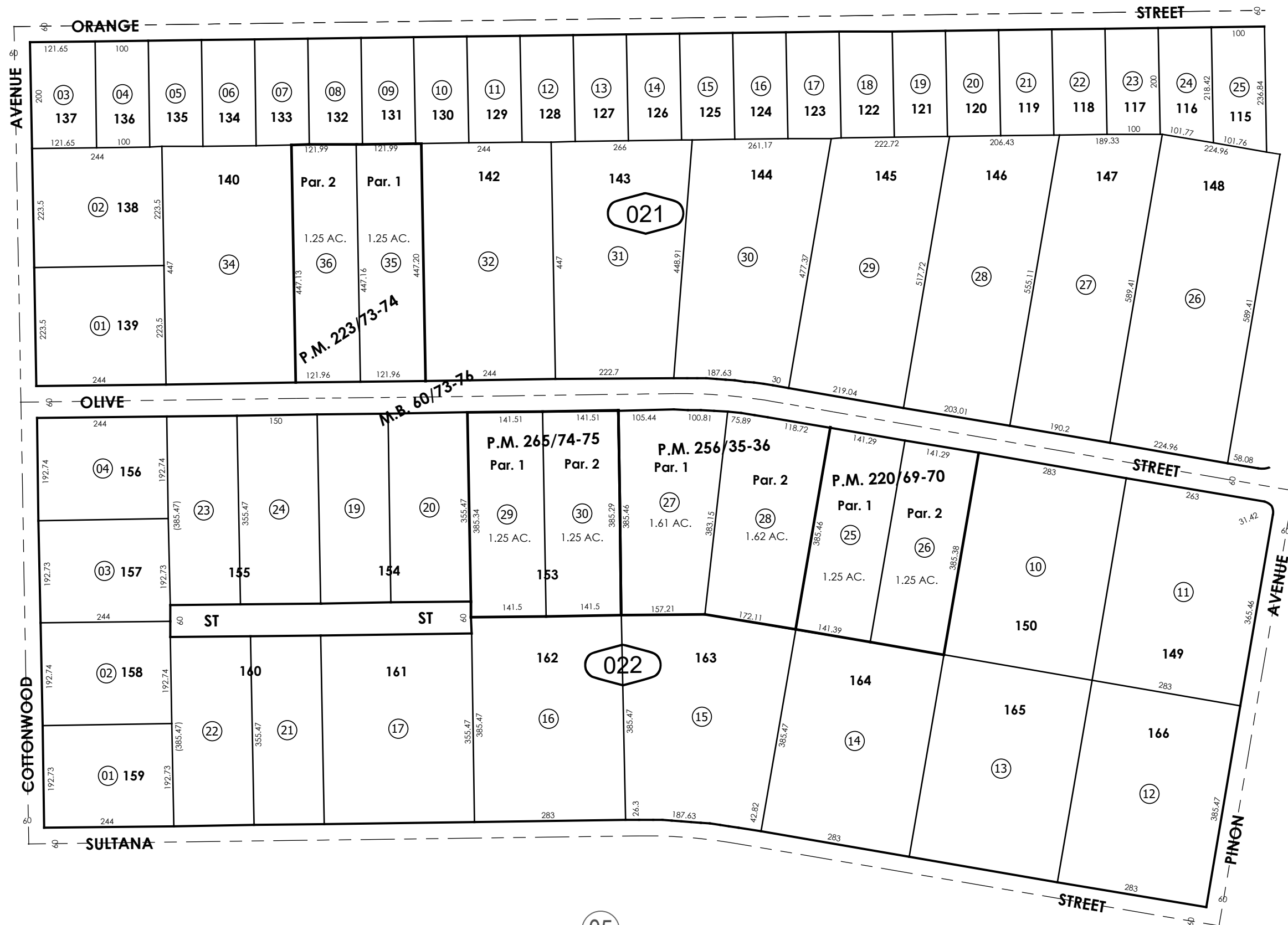


# Ptn. Tract No. 4957, M.B. 60/73-76

City of Hesperia  
Tax Rate Area  
20094

## 0409 - 02

0408  
17



Parcel Map No. 20899, P.M. 265/74-75  
 Parcel Map No. 17138, P.M. 220/69-70  
 Parcel Map No. 17482, P.M. 223/73-74  
 Parcel Map No. 20190, P.M. 256/35-36

March 2004

Ptn. N.E.1/4, Sec. 19  
T.4N., R.4W.

Assessor's Map  
Book 0409 Page 02  
San Bernardino County

REVISED  
06/28/21 RU  
03/05/26 BS