

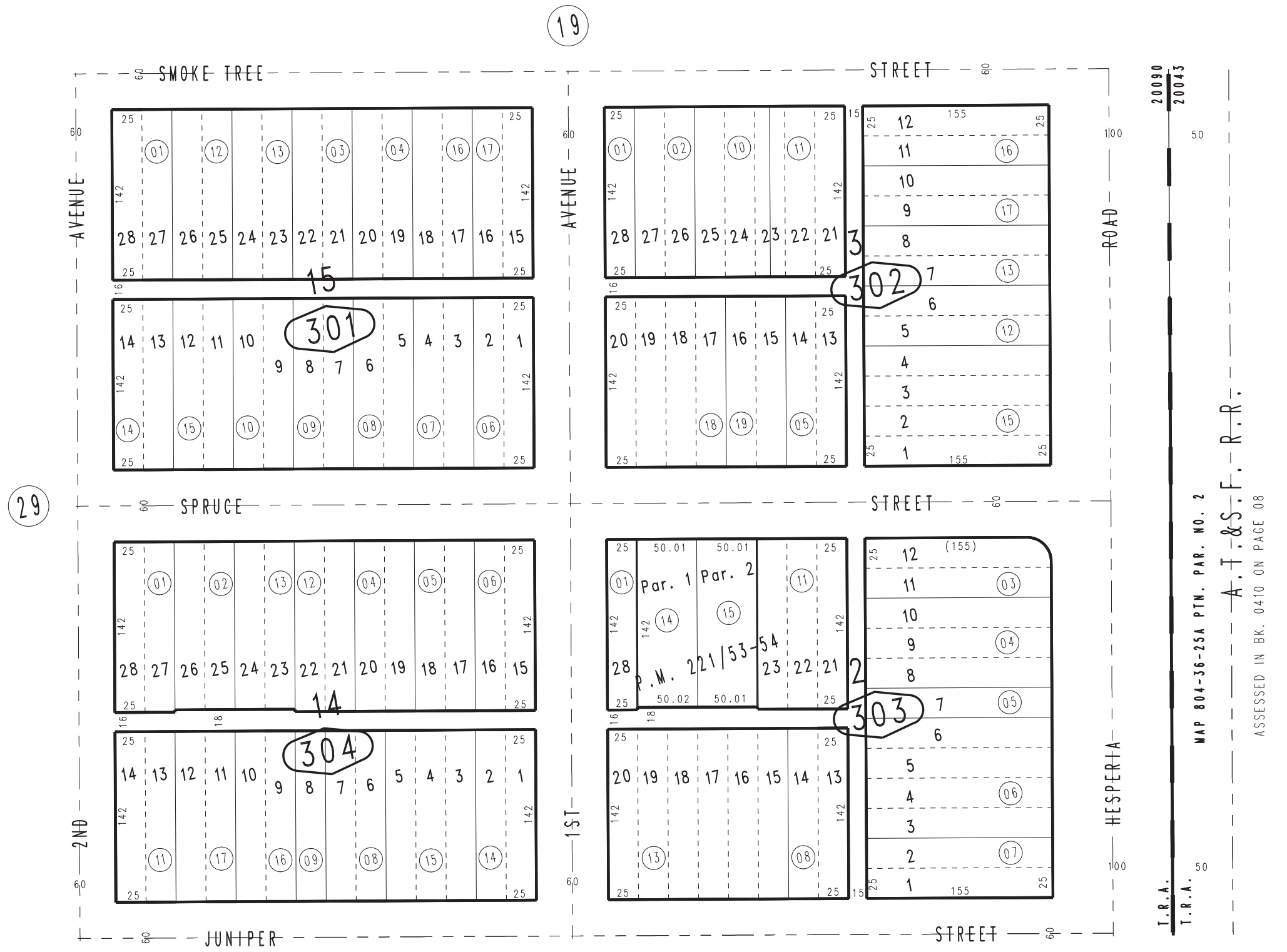
THIS MAP IS FOR THE PURPOSE  
OF AD VALOREM TAXATION ONLY.



# Ptn. Map No. 1 of Hesperia M.B. 12/24

City of Hesperia  
Tax Rate Area  
20043 20090

0407-30



0410  
16

0413  
06

T.R.A. 20090  
T.R.A. 20043

MAP 804-36-25A PTN. PAR. NO. 2  
A.T.&S.F. R.R.  
ASSESSED IN BK. 0410 ON PAGE 08