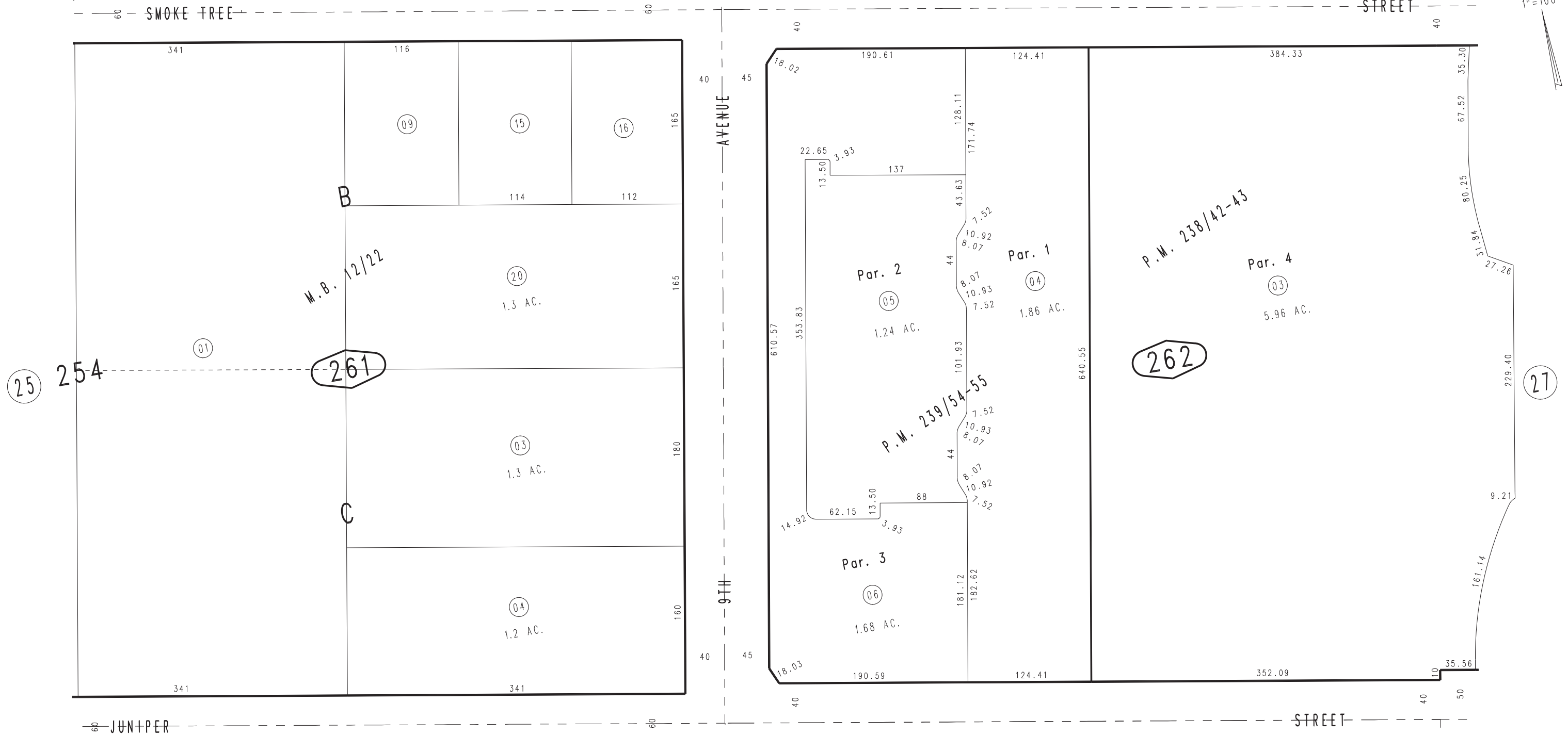
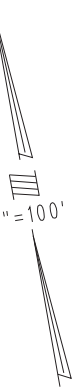


THIS MAP IS FOR THE PURPOSE OF AD VALOREM TAXATION ONLY.

# Ptn. Map No. 1 of Hesperia M.B. 12/22

City of Hesperia  
Tax Rate Area  
20090

0407-26



0413  
01

0413  
02

March 2004

Parcel Map No. 19317, P.M. 239/54-55  
Ptn. Parcel Map No. 19153, P.M. 238/42-43

Ptn. S.E.1/4, Sec. 17  
T.4N., R.4W.

Assessor's Map  
Book 0407 Page 26  
San Bernardino County

REVISED  
05/03/11 RU  
01/17/12 RU