

THIS MAP IS FOR THE PURPOSE OF AD VALOREM TAXATION ONLY.

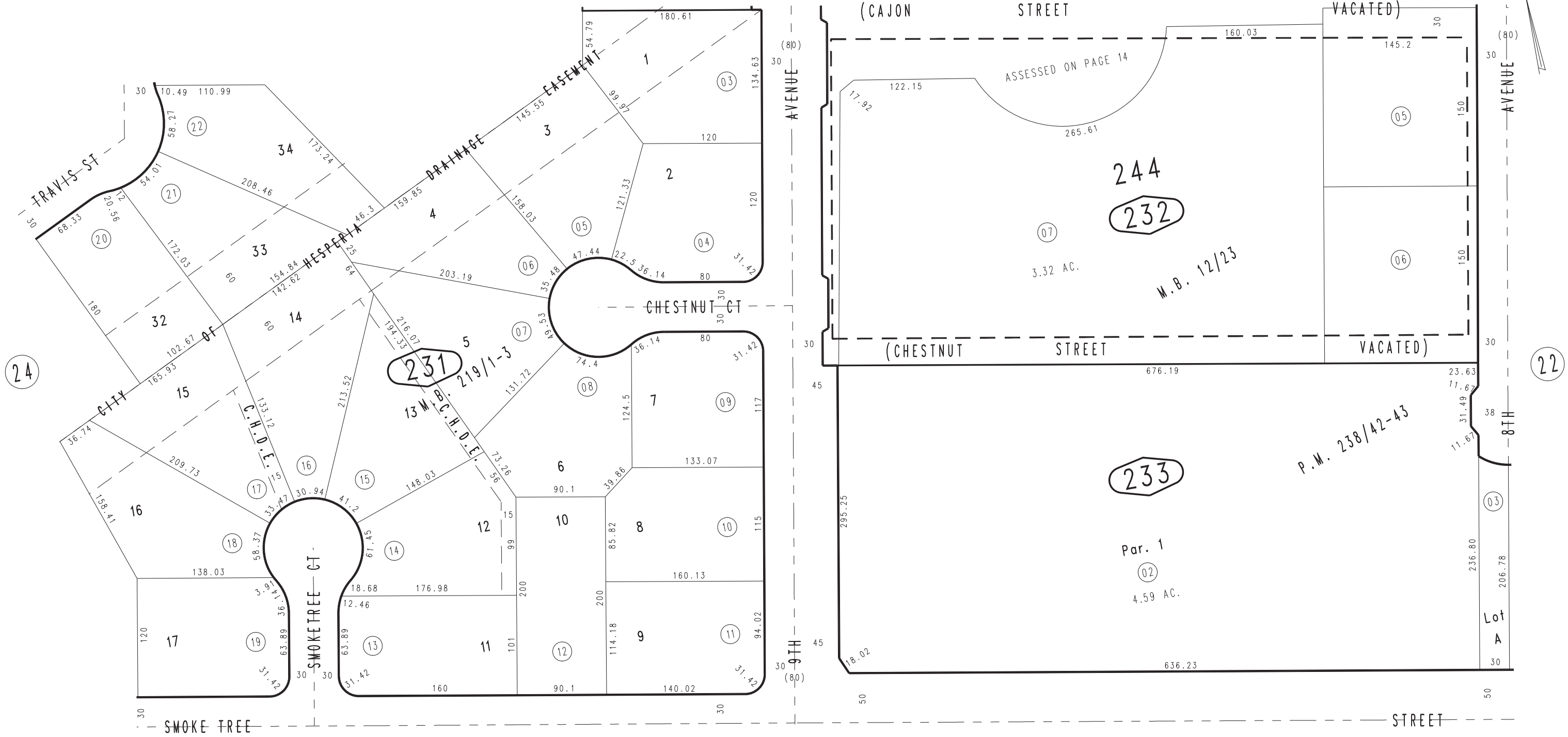
# Ptn. Map No. 1 of Hesperia M.B. 12/23

City of Hesperia  
Tax Rate Area  
20090

0407-23



1"=100'



March 2004

Ptn. Parcel Map No. 19153, P.M. 238/42-43  
Ptn. Tract No. 13751, M.B. 219/1-3

Ptn. S.E.1/4, Sec. 17  
T.4N., R.4W.

Assessor's Map  
Book 0407 Page 23  
San Bernardino County

REVISED  
05/04/11 RU  
11/02/12 BK-MC