

THIS MAP IS FOR THE PURPOSE  
OF AD VALOREM TAXATION ONLY.

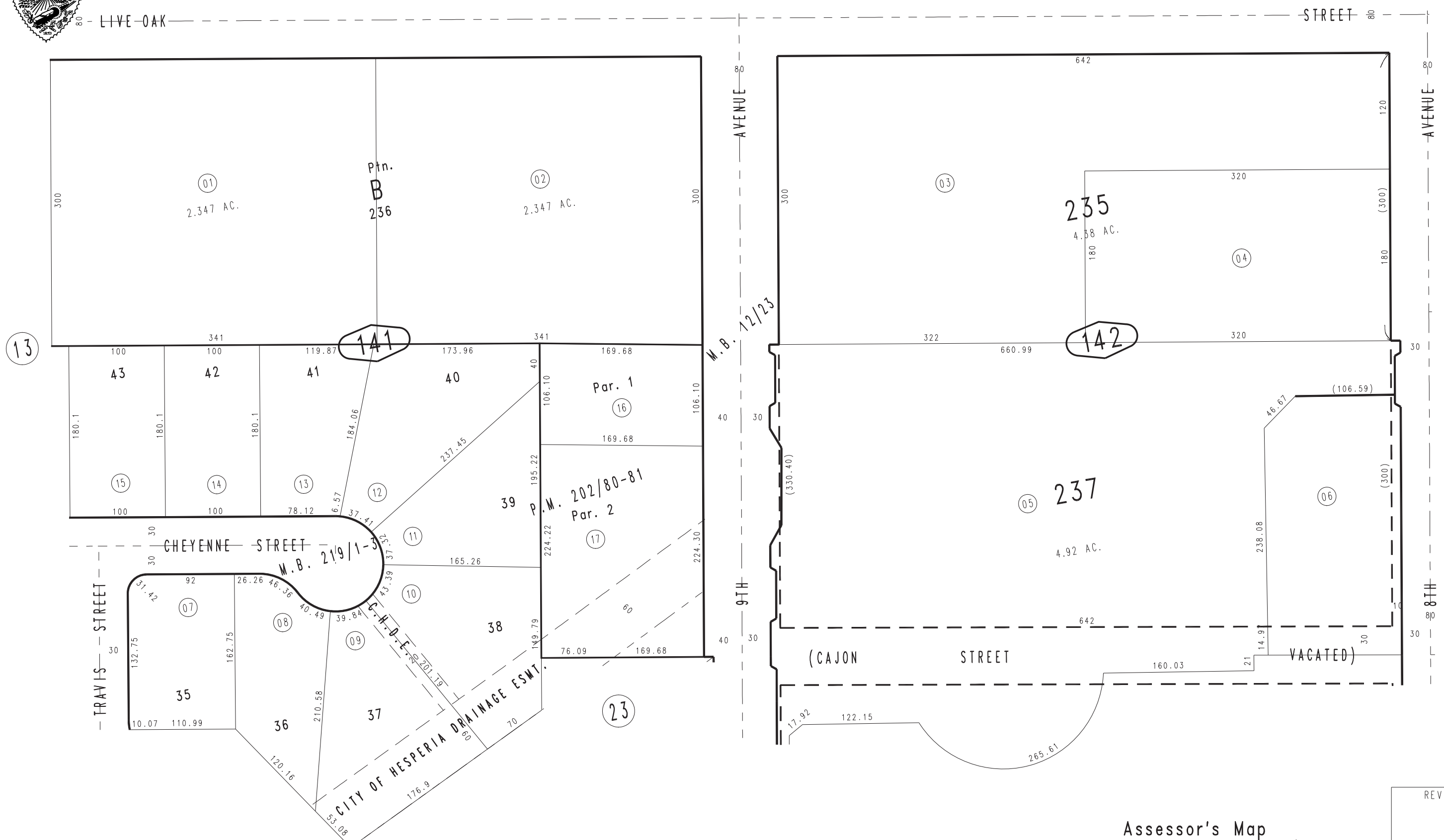
# Ptn. Map No. 1 of Hesperia M.B. 12/23

City of Hesperia  
Tax Rate Area  
20090

0407-14



1"=100'



March 2004

Parcel Map No. 16208, P.M. 202/80-81  
Ptn. Tract No. 13751, M.B. 219/1-3

Assessor's Map  
Book 0407 Page 14  
San Bernardino County

REVISED