

THIS MAP IS FOR THE PURPOSE
OF AD VALOREM TAXATION ONLY.

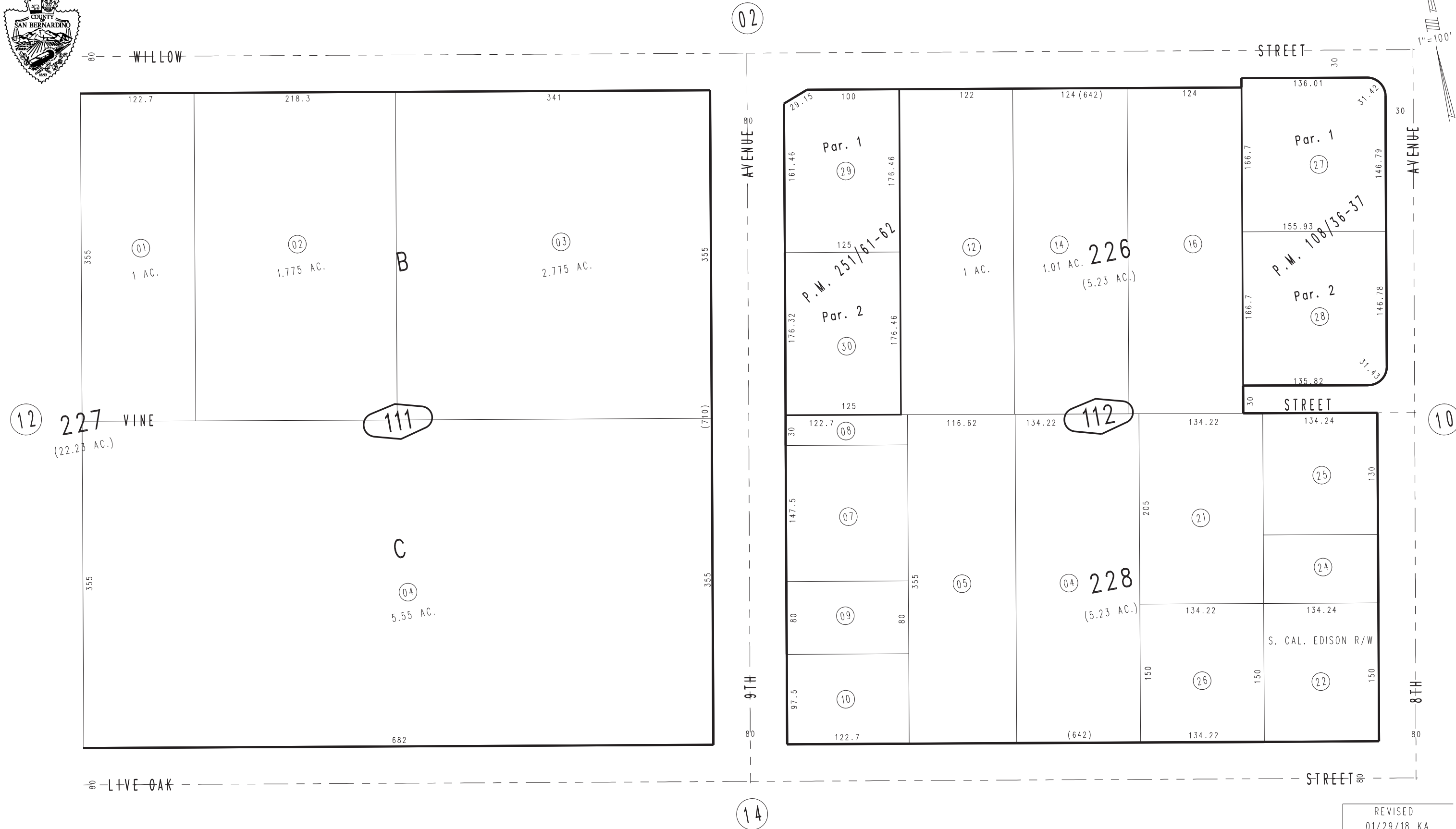
Ptn. Map No. 1 of Hesperia M.B. 12/23

City of Hesperia
Tax Rate Area
20090

0407-11



1"=100'



March 2004

Parcel Map No. 20013, P.M. 251/61-62
Parcel Map No. 10031, P.M. 108/36-37

Assessor's Map
Book 0407 Page 11
San Bernardino County

REVISED
01/29/18 KA
03/07/18 KA-MC
02/27/19 KA