

THIS MAP IS FOR THE PURPOSE OF AD VALOREM TAXATION ONLY.

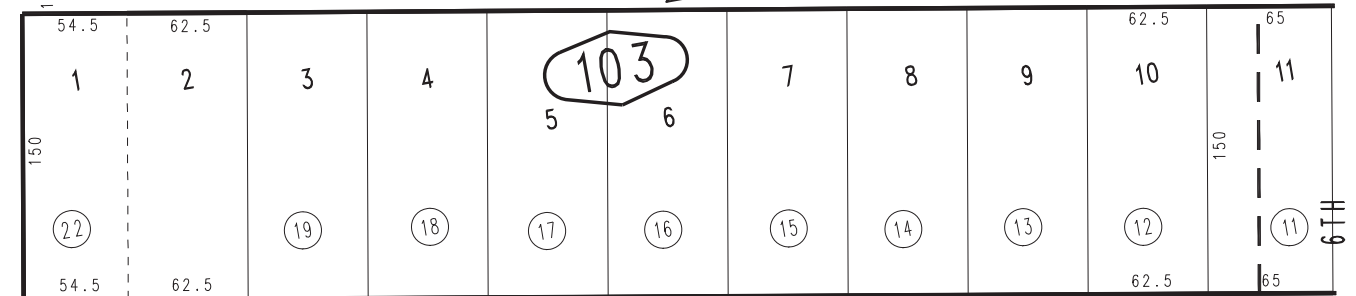
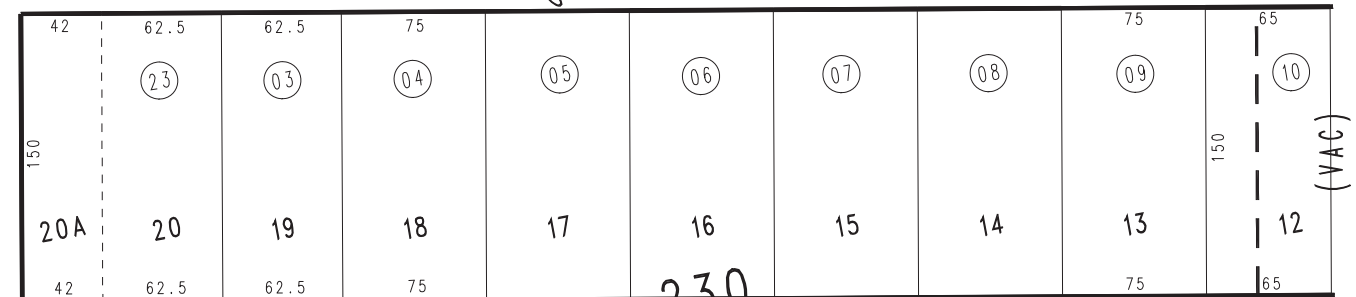
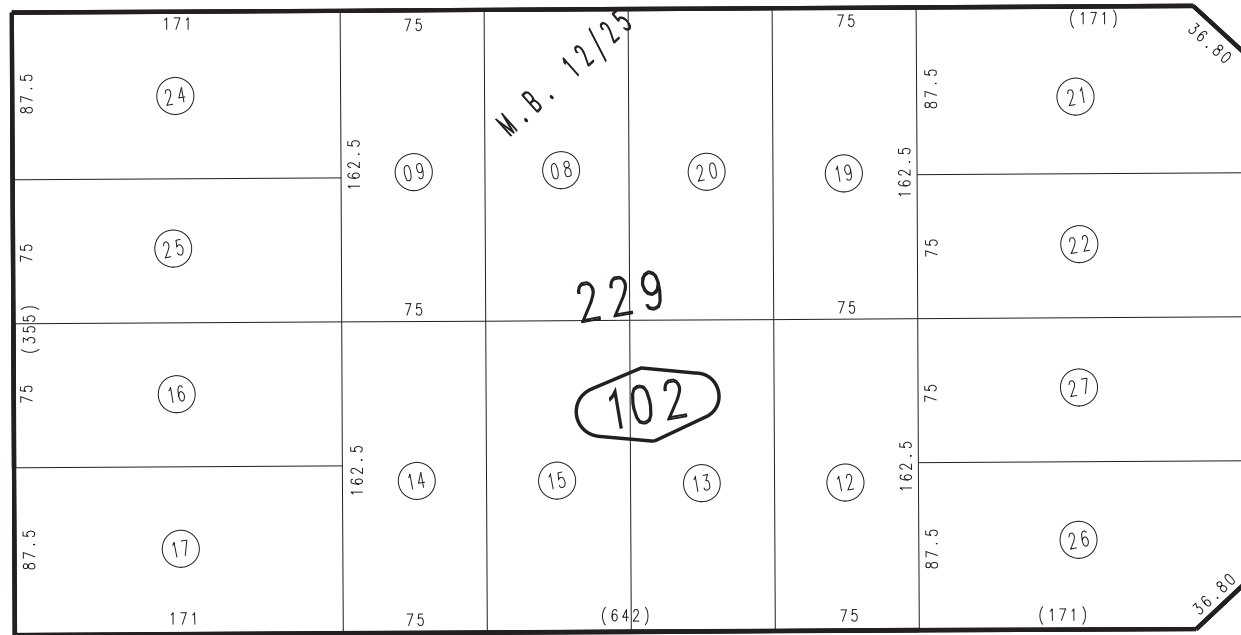
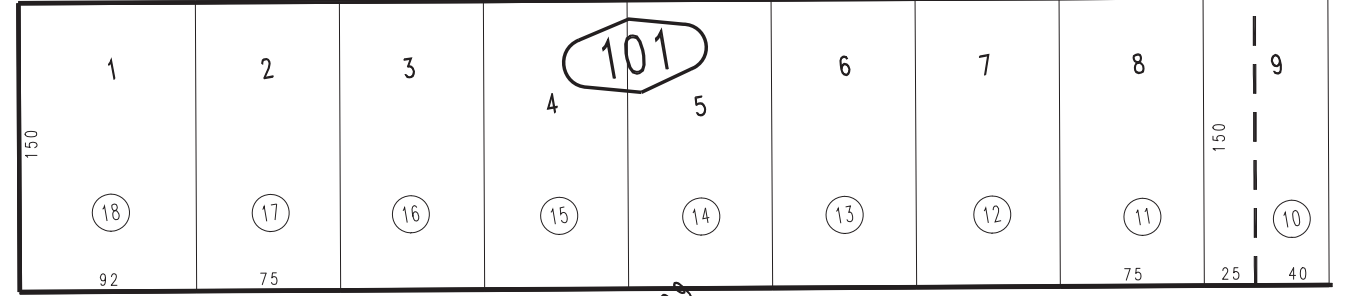
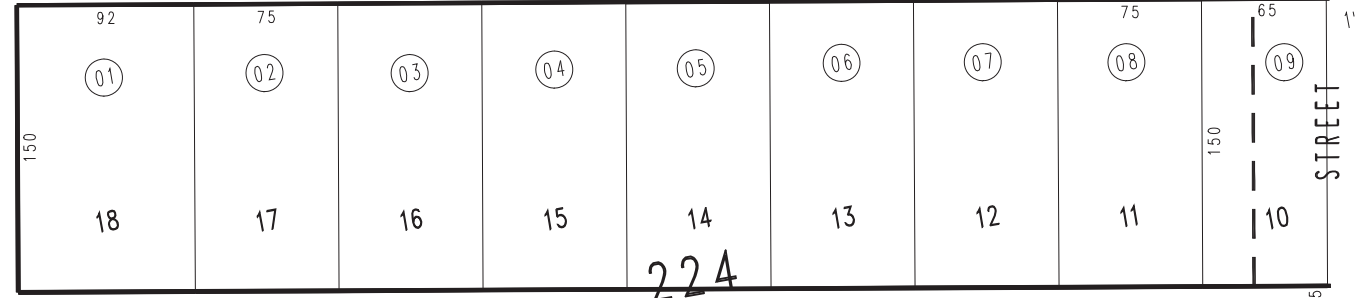
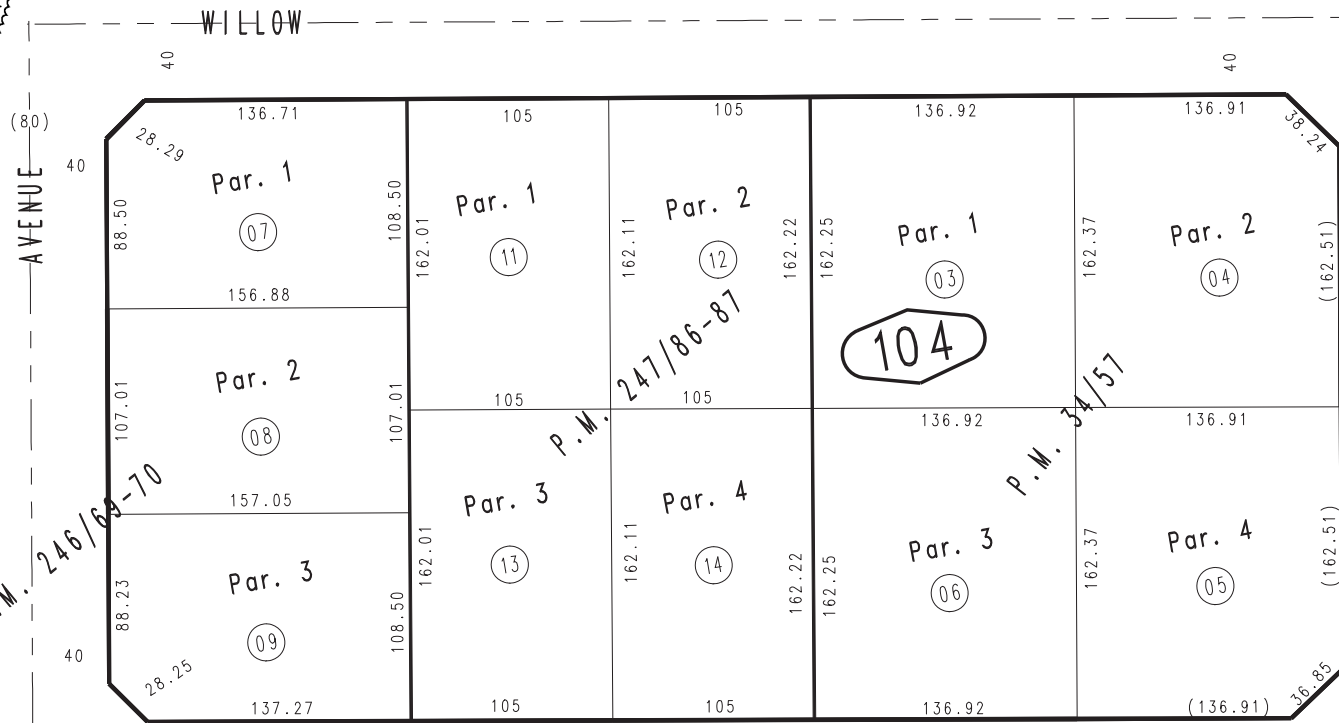
Ptn. Map No. 1 of Hesperia M.B. 12/25

City of Hesperia
Tax Rate Area
20090

0407-10



1"=100'



Parcel Map No. 19788, P.M. 247/86-87
 Parcel Map No. 19658, P.M. 246/69-70
 Parcel Map No. 3773, P.M. 34/57
 Ptn. Official Maps, 1/25-29

March 2004

Ptn. S.E.1/4, Sec. 17
T.4N., R.4W.

Assessor's Map
Book 0407 Page 10
San Bernardino County

REVISED
09/27/16 RM
05/23/17 RU