

THIS MAP IS FOR THE PURPOSE
OF AD VALOREM TAXATION ONLY.

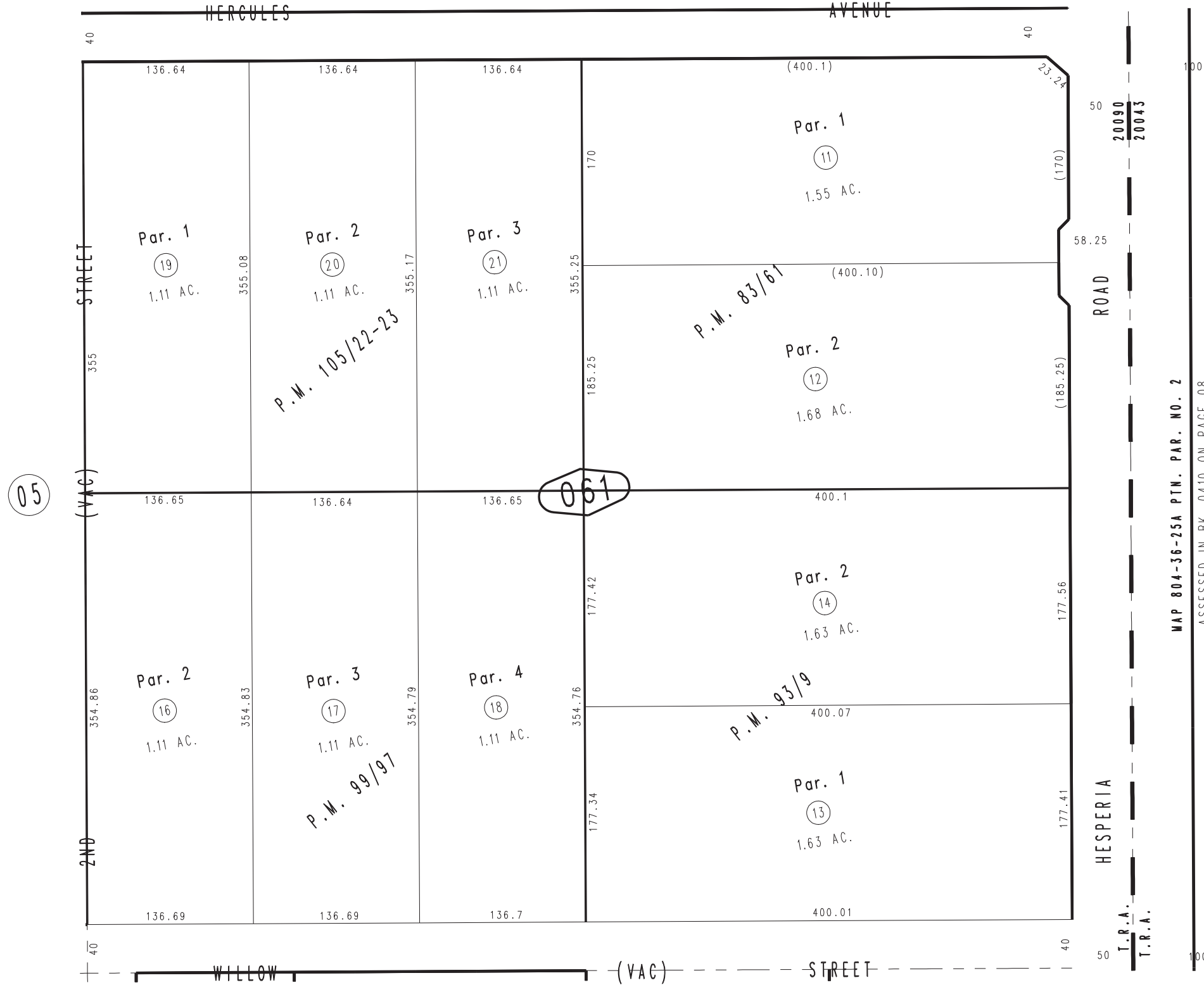
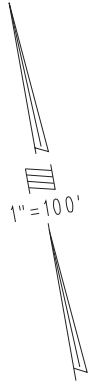


Parcel Map No. 8123, P.M. 83/61

0414
21

City of Hesperia
Tax Rate Area
20043,20090

0407-06



05

061

0410
08

07

MAP 804-36-25A PTN. PAR. NO. 2
ASSESSED IN BK. 0410 ON PAGE 08

A. T. & S. F. R. R.

Parcel Map No. 9929, P.M. 105/22-23
Ptn. Parcel Map No. 9429, P.M. 99/97
Parcel Map No. 8558, P.M. 93/9

Fmly Ptn. Map No. 1 of Hesperia
M.B. 12/25

Assessor's Map
Book 0407 Page 06
San Bernardino County

March 2004

REVISED
01/30/25 CA