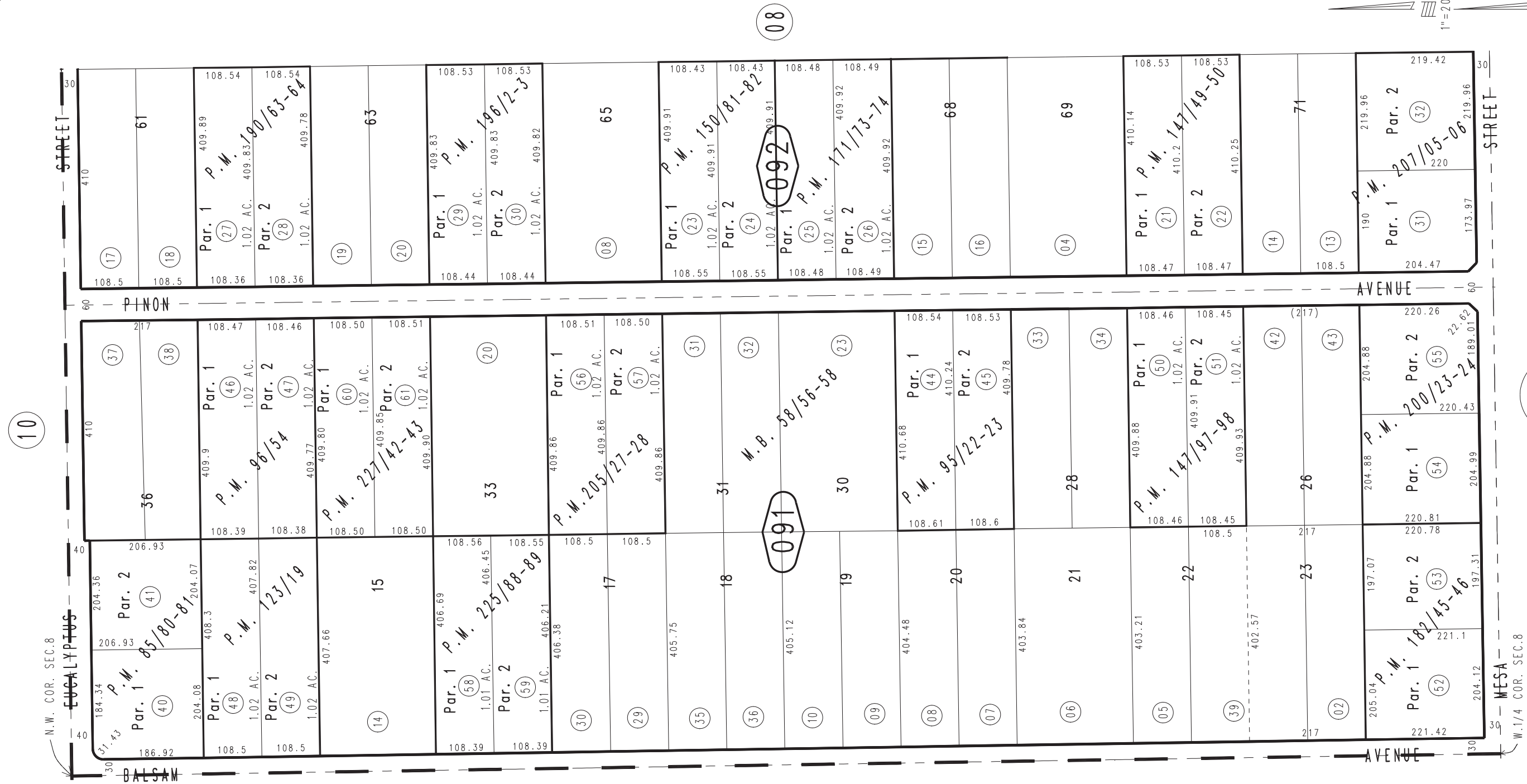
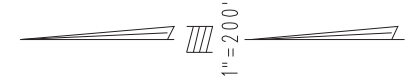


THIS MAP IS FOR THE PURPOSE OF AD VALOREM TAXATION ONLY.

W.1/2 N.W.1/4 Sec.8, T.4N.,R.4W., S.B.B.&M.
Ptn. Tract No. 4663, M.B. 58/56-58

City of Hesperia
Tax Rate Area
20080

0406-09



Parcel Map No. 15018, P.M. 182/45-46
 Parcel Map No. 14291, P.M. 171/73-74
 Parcel Map No. 12908, P.M. 150/81-82
 Parcel Map No. 12828, P.M. 147/97-98
 Parcel Map No. 12366, P.M. 147/49-50
 Parcel Map No. 11123, P.M. 123/19
 Parcel Map No. 9190, P.M. 96/54
 Parcel Map No. 9061, P.M. 95/22-23
 Parcel Map No. 8294, P.M. 85/80-81

Parcel Map No. 17037, P.M. 227/42-43
 Parcel Map No. 18351, P.M. 225/88-89
 Parcel Map No. 16670, P.M. 207/05-06
 Parcel Map No. 16459, P.M. 205/27-28
 Parcel Map No. 16060, P.M. 200/23-24
 Parcel Map No. 15834, P.M. 196/02-03
 Parcel Map No. 15495, P.M. 190/63-64

April 2004

Assessor's Map
Book 0406 Page 09
San Bernardino County

REVISED
01/24/08 TY
04/11/08 TY

0408
21