

THIS MAP IS FOR THE PURPOSE OF AD VALOREM TAXATION ONLY.

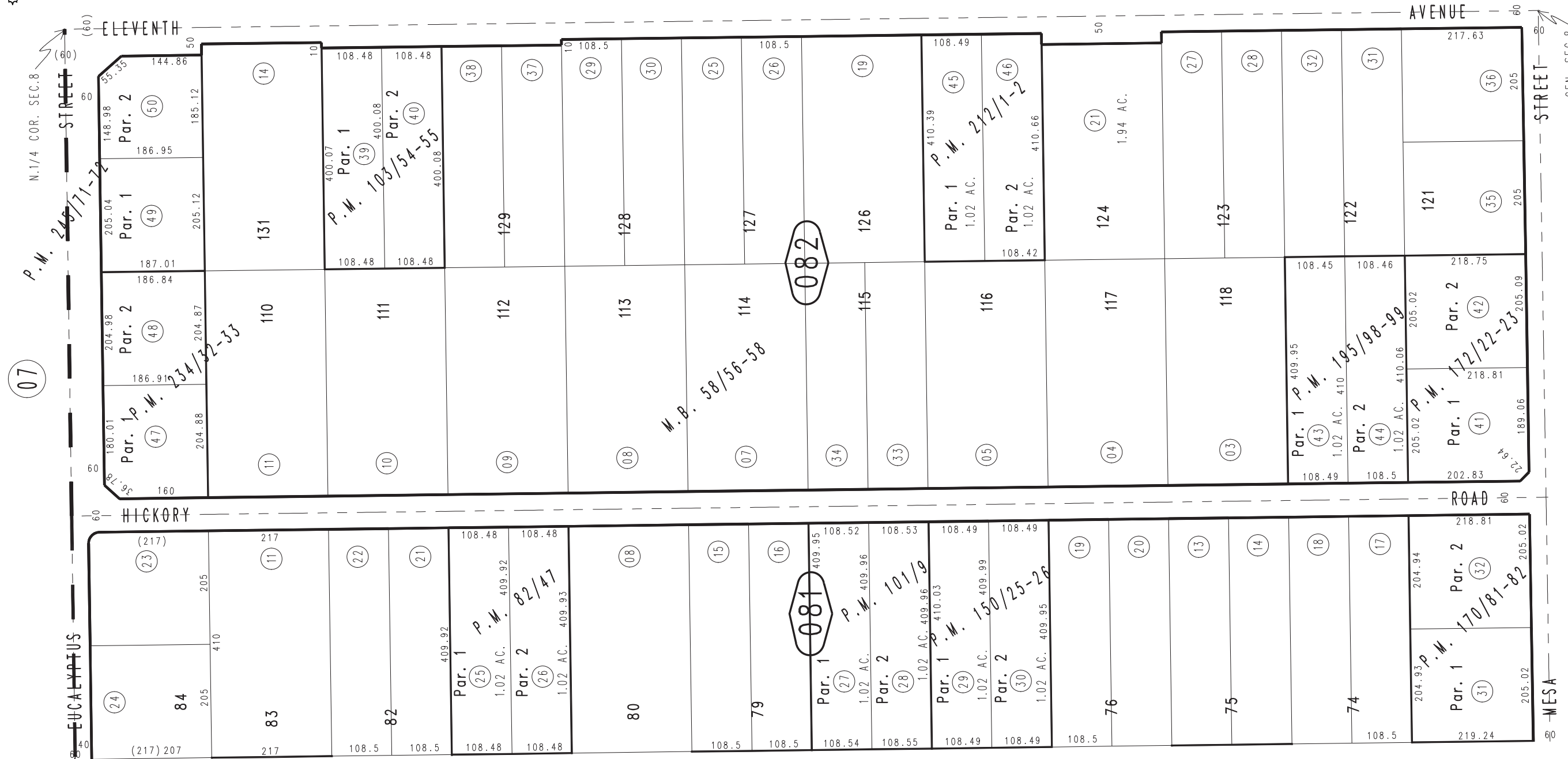
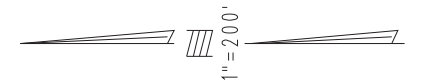
E.1/2 N.W.1/4 Sec.8, T.4N.,R.4W., S.B.B.&M.
Ptn. Tract No. 4663, M.B. 58/56-58

City of Hesperia
Tax Rate Area
20080

0406-08



0414
09



- Parcel Map No. 17305, P.M. 234/32-33
- Parcel Map No. 16815, P.M. 212/1-2
- Parcel Map No. 15800, P.M. 195/98-99
- Parcel Map No. 14492, P.M. 172/22-23
- Parcel Map No. 14426, P.M. 170/81-82
- Parcel Map No. 12467, P.M. 150/25-26
- Parcel Map No. 9413, P.M. 103/54-55
- Parcel Map No. 9211, P.M. 101/9
- Parcel Map No. 8049, P.M. 82/47

Parcel Map No. 19617, P.M. 245/71-72

April 2004

Assessor's Map
Book 0406 Page 08
San Bernardino County

REVISED
05/19/15 GW
06/02/16 RM