

THIS MAP IS FOR THE PURPOSE OF AD VALOREM TAXATION ONLY.

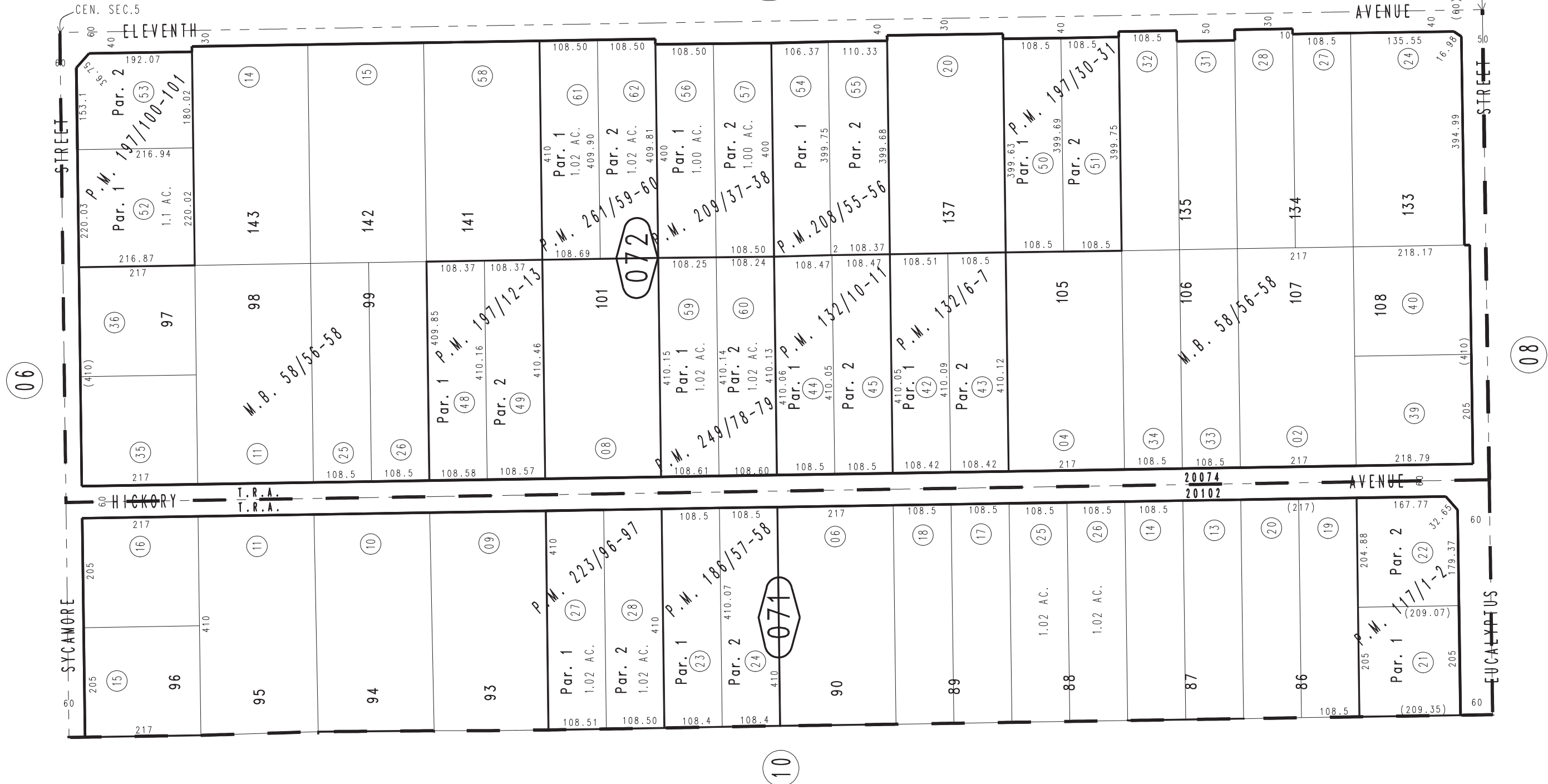
E.1/2 S.W.1/4 Sec.5, T.4N.,R.4W., S.B.B.&M.  
Ptn. Tract No. 4663, M.B. 58/56-58

City of Hesperia  
Tax Rate Area  
20074 20102

0406-07



0414  
08



- Parcel Map No. 15939, P.M. 197/30-31
- Parcel Map No. 15888, P.M. 197/12-13
- Parcel Map No. 15197, P.M. 186/57-58
- Parcel Map No. 11593, P.M. 132/10-11
- Parcel Map No. 11704, P.M. 132/6-7
- Parcel Map No. 10615, P.M. 117/1-2
- Parcel Map No. 20534, P.M. 261/59-60
- Parcel Map No. 19870, P.M. 249/78-79
- Parcel Map No. 18156, P.M. 223/96-97
- Parcel Map No. 16536, P.M. 209/37-38
- Parcel Map No. 16649, P.M. 208/55-56
- Parcel Map No. 15914, P.M. 197/100-101

April 2004

Assessor's Map  
Book 0406 Page 07  
San Bernardino County

REVISED  
10/17/23 KA