

THIS MAP IS FOR THE PURPOSE OF AD VALOREM TAXATION ONLY.

W.1/2 N.W.1/4 Sec.6, T.4N.,R.4W., S.B.B.&M.
Ptn. Tract No. 4635, M.B. 58/62-66

City of Hesperia
Tax Rate Area
12081,20035,20074
20101,20102

0406-01



T.5N.,R.4W.
T.4N.,R.4W.



3093
19

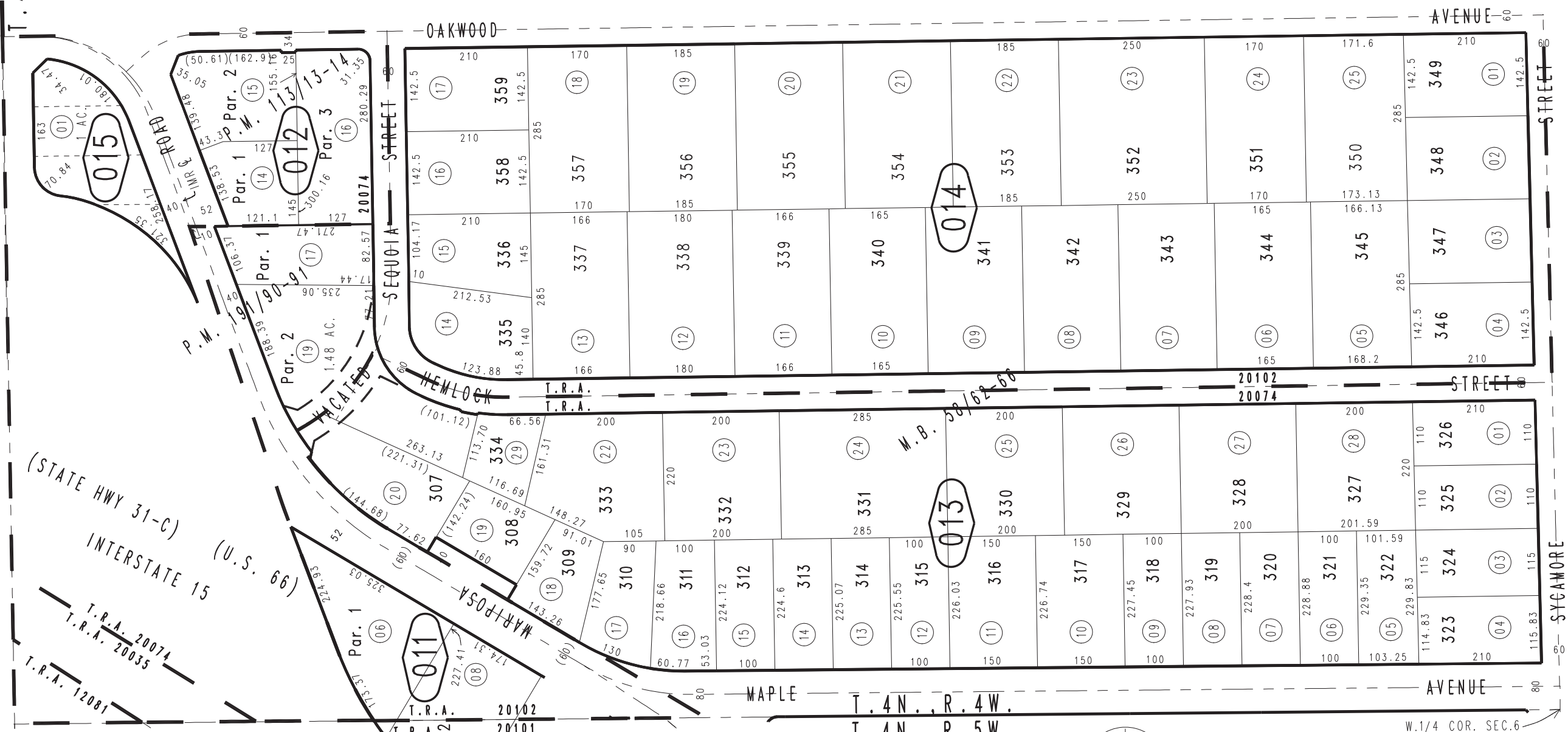
3093
18

3072
23

3072
24

16

02



Parcel Map No. 15575, P.M. 191/90-91
Parcel Map No. 10176, P.M. 113/13-14
Ptn. Parcel Map No. 9872, P.M. 108/72-73

April 2004

Assessor's Map
Book 0406 Page 01
San Bernardino County

REVISED
10/20/11 LH-MC
09/04/13 RU