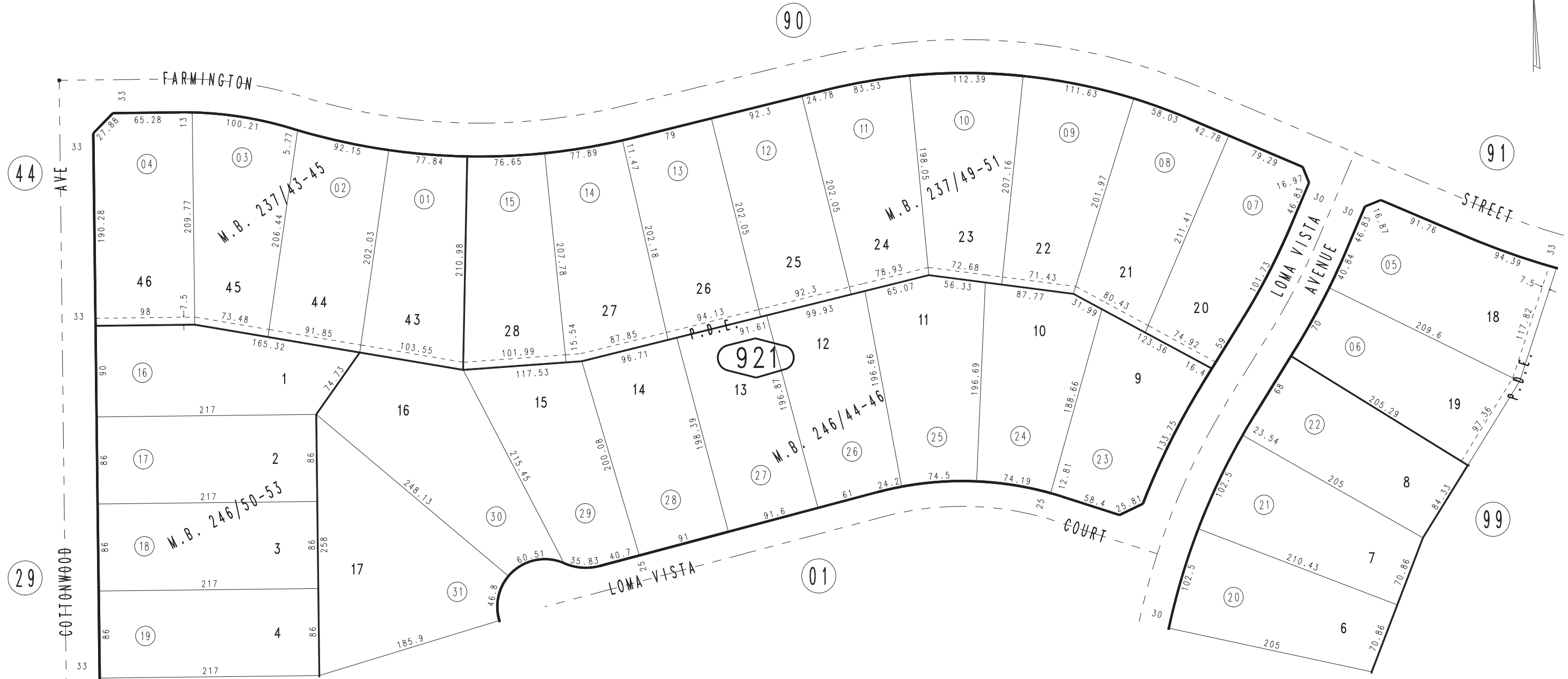


THIS MAP IS FOR THE PURPOSE
OF AD VALOREM TAXATION ONLY.

Ptn. Tract No. 13423-1, M.B. 237/43-45

City of Hesperia
Tax Rate Area
20007

0405-92



February 2004

Ptn. Tract No. 13423-7, M.B. 246/50-53
Ptn. Tract No. 13423-5, M.B. 246/44-46
Ptn. Tract No. 13423-3, M.B. 237/49-51

Ptn. S.E.1/4, Sec. 6
T.3N., R.4W.

Assessor's Map
Book 0405 Page 92
San Bernardino County

REVISED
04/27/09 KC