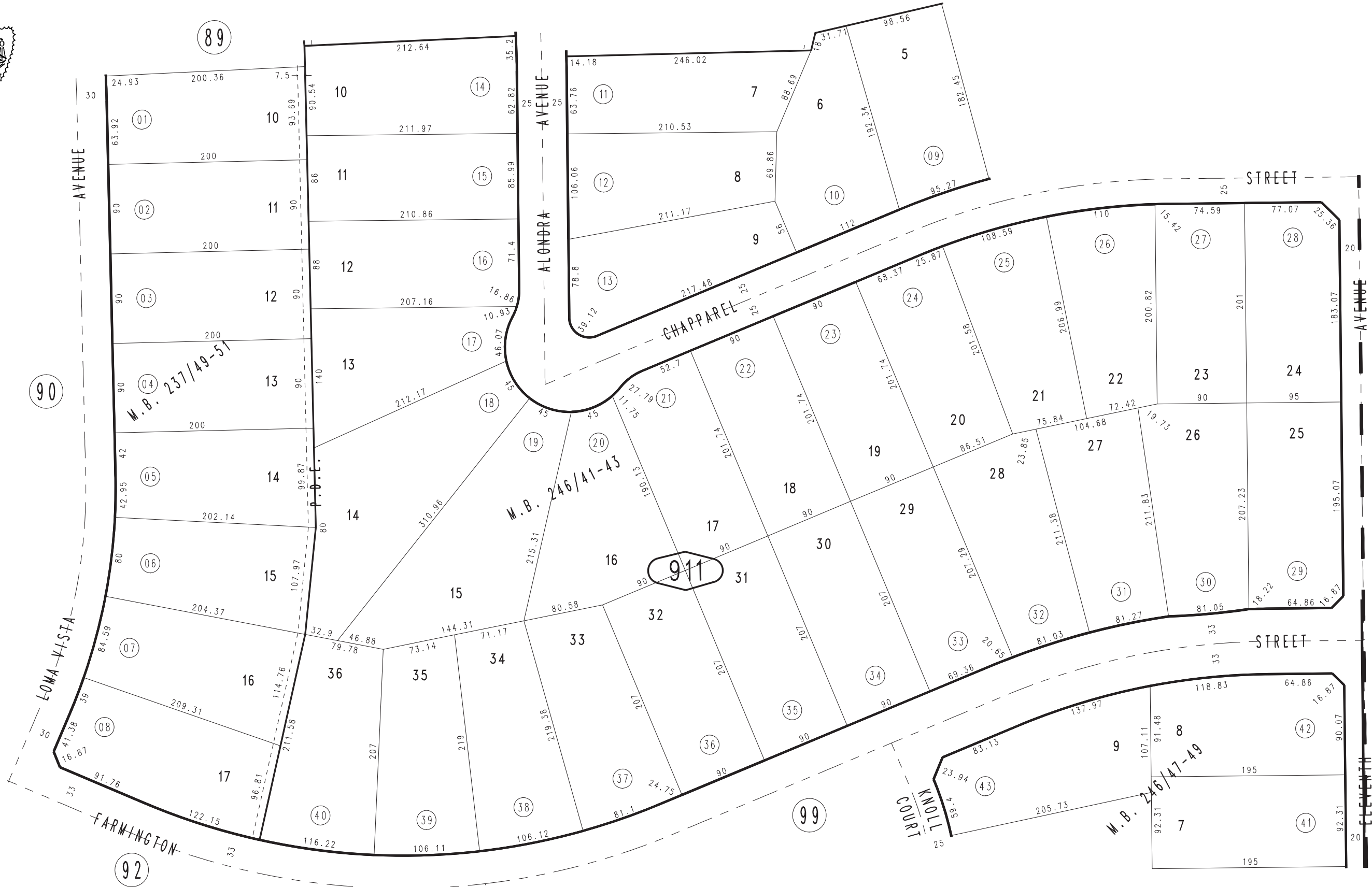


THIS MAP IS FOR THE PURPOSE OF AD VALOREM TAXATION ONLY.

Ptn. Tract No. 13423-3, M.B. 237/49-51

City of Hesperia
Tax Rate Area
20007

0405-91



February 2004

Ptn. Tract No. 13423-6, M.B. 246/47-49
Ptn. Tract No. 13423-4, M.B. 246/41-43

Ptn. E.1/2, Sec. 6
T.3N., R.4W.

Assessor's Map
Book 0405 Page 91
San Bernardino County

REVISED
04/27/09 KC