

THIS MAP IS FOR THE PURPOSE  
OF AD VALOREM TAXATION ONLY.

Ptn. N.1/2, N.E.1/4, Sec.6, T.3N.,R.4W., S.B.M.

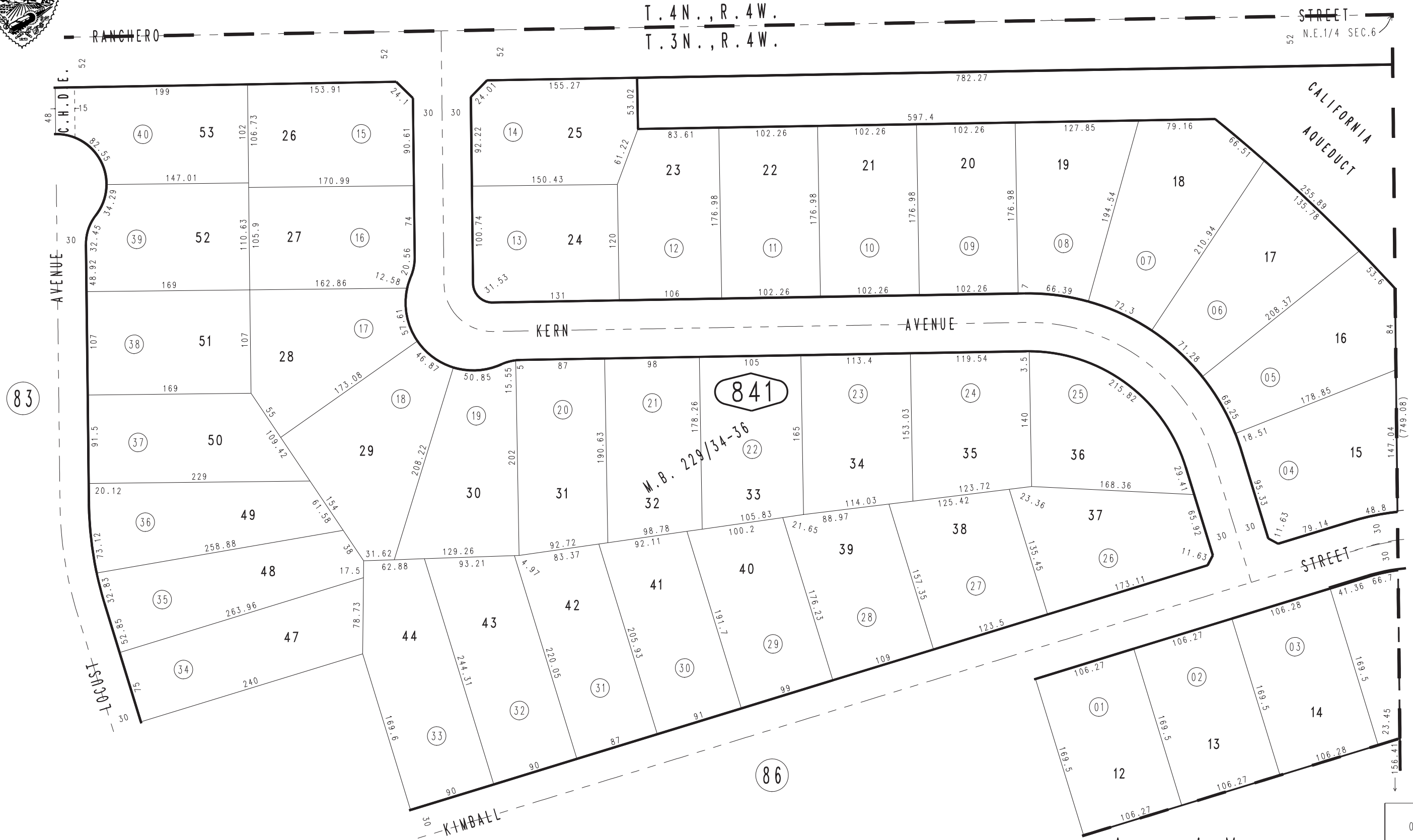
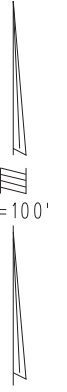
City of Hesperia  
Tax Rate Area  
20024

0405-84



0409  
22

T.4N., R.4W.  
T.3N., R.4W.



0397  
20

0397  
29