

THIS MAP IS FOR THE PURPOSE OF AD VALOREM TAXATION ONLY.

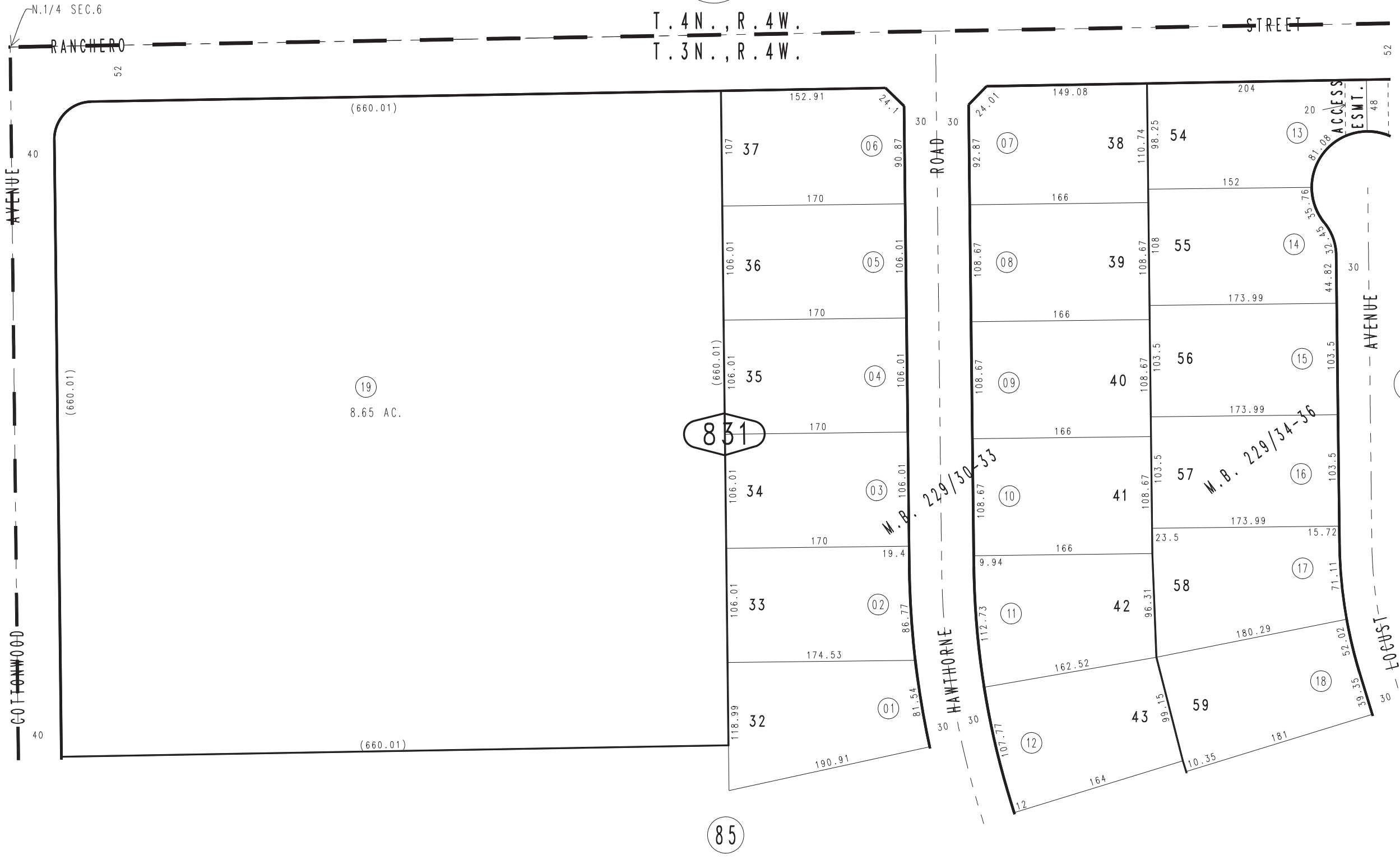
Ptn. N.1/2, N.E.1/4, Sec.6, T.3N.,R.4W., S.B.M.

City of Hesperia  
Tax Rate Area  
20024

0405-83



0409  
22



24

19  
8.65 AC.

831

M.B. 229/30-33

M.B. 229/34-36

84

85