

THIS MAP IS FOR THE PURPOSE OF AD VALOREM TAXATION ONLY.

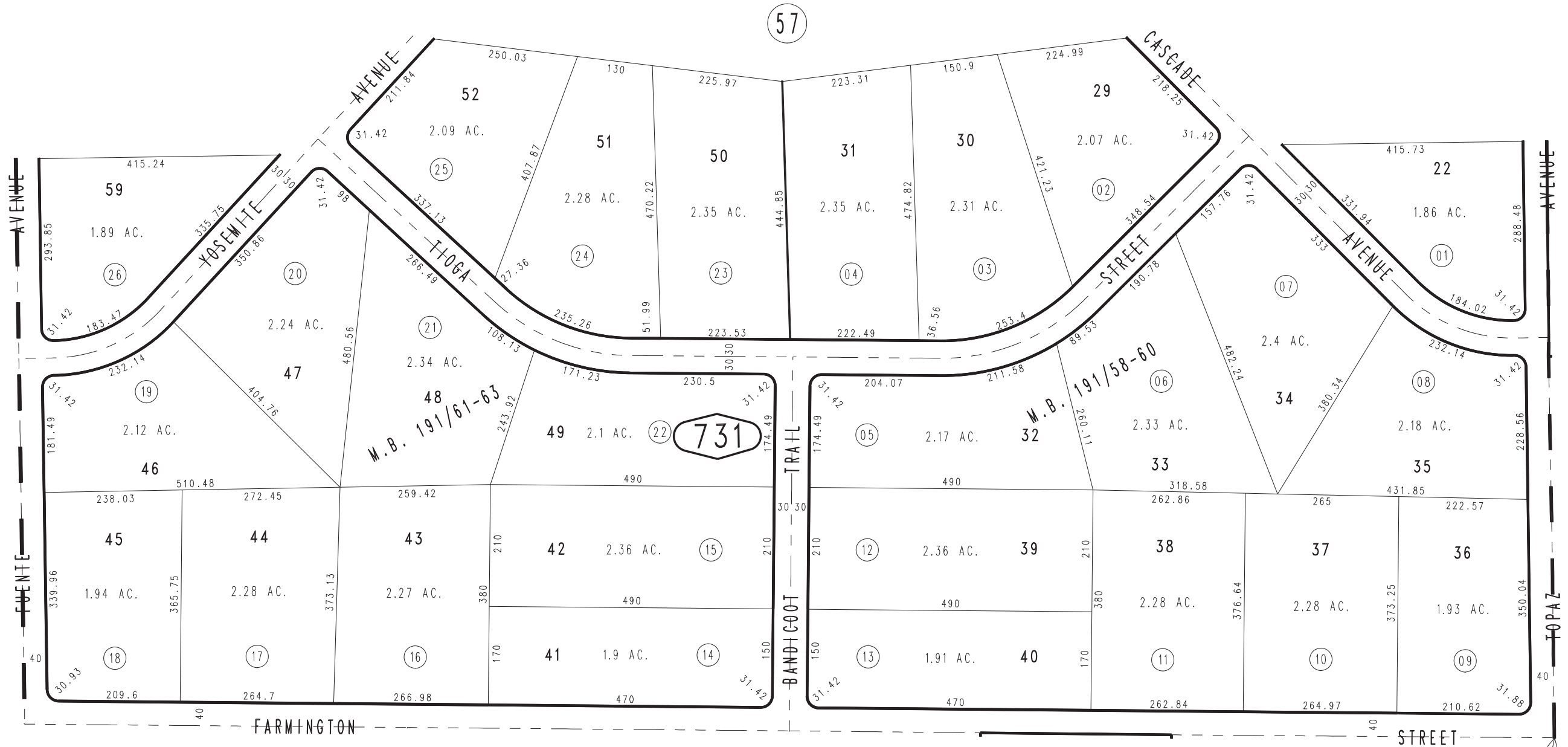
Ptn. Tract No. 11559, M.B. 191/61-63

Hesperia Unified Tax Rate Area 79012

0405-73



0357  
43



47

57

14

M.B. 191/61-63  
731

M.B. 191/58-60

CENTER SEC. 1  
(635.68 AC.)