

THIS MAP IS FOR THE PURPOSE OF AD VALOREM TAXATION ONLY.



Ptn. Tract No. 17980-6, M.B. 368/70-76

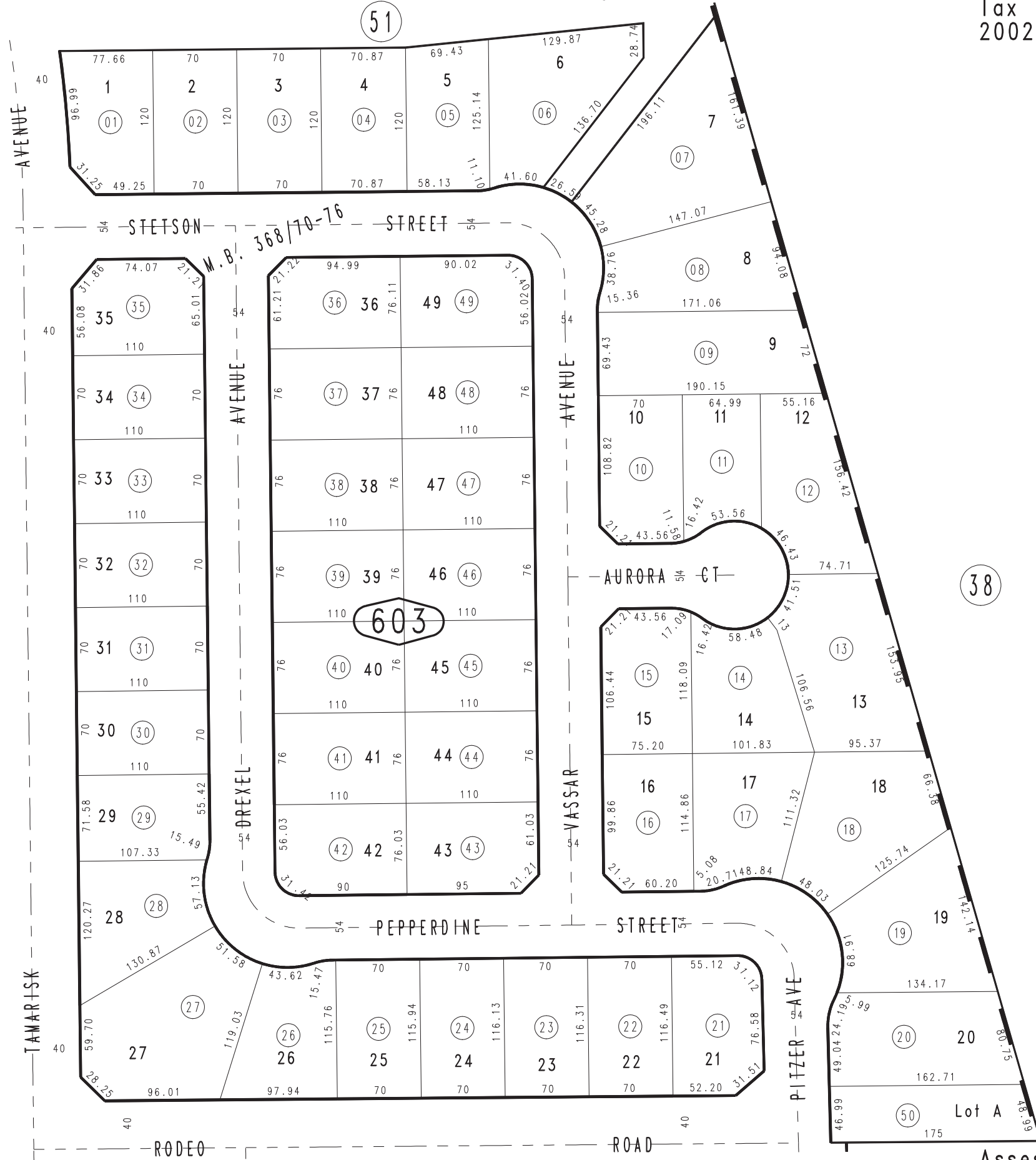
City of Hesperia
Tax Rate Area
20029

0405-60



59

61



56

Ptn. S.E. 1/4, Sec. 36 38
T.4N., R.5W.

Assessor's Map
Book 0405 Page 60
San Bernardino County

REVISED
01/31/25 RU