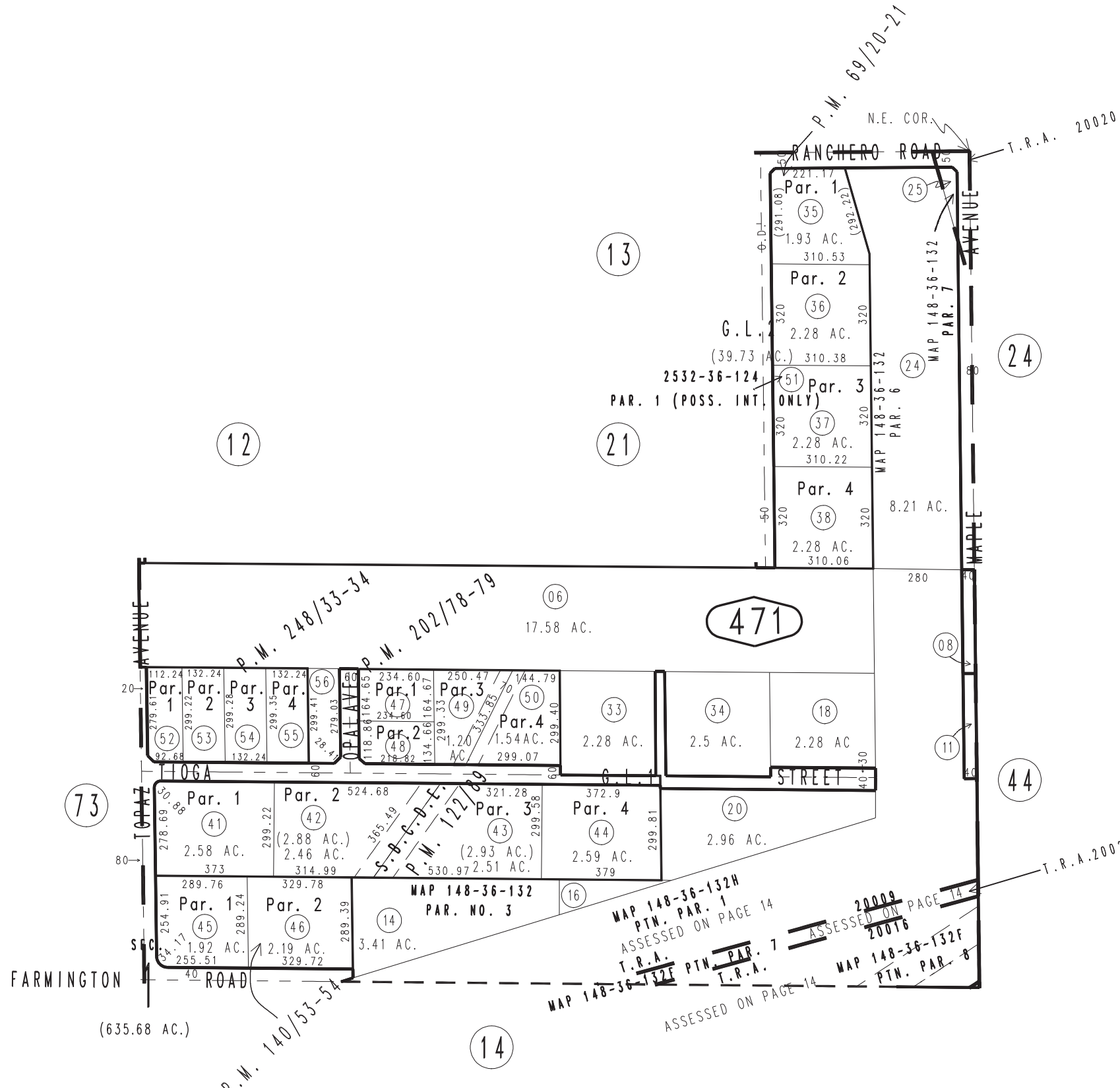
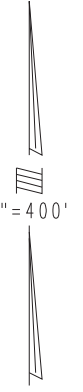


THIS MAP IS FOR THE PURPOSE OF AD VALOREM TAXATION ONLY.

N.1/2 Fractional Sec.1, T.3N.,R.5W., S.B.B.&M.

City of Hesperia
Tax Rate Area
20009,20016,20020

0405-47



- Parcel Map No. 19703, P.M. 248/33-34
- Parcel Map No. 16263, P.M. 202/78-79
- Parcel Map No. 12071, P.M. 140/53-54
- Parcel Map No. 10714, P.M. 122/89
- Parcel Map No. 7075, P.M. 69/20-21

February 2004

Assessor's Map
Book 0405 Page 47
San Bernardino County

REVISED
09/29/22 KA
04/16/24 CA