

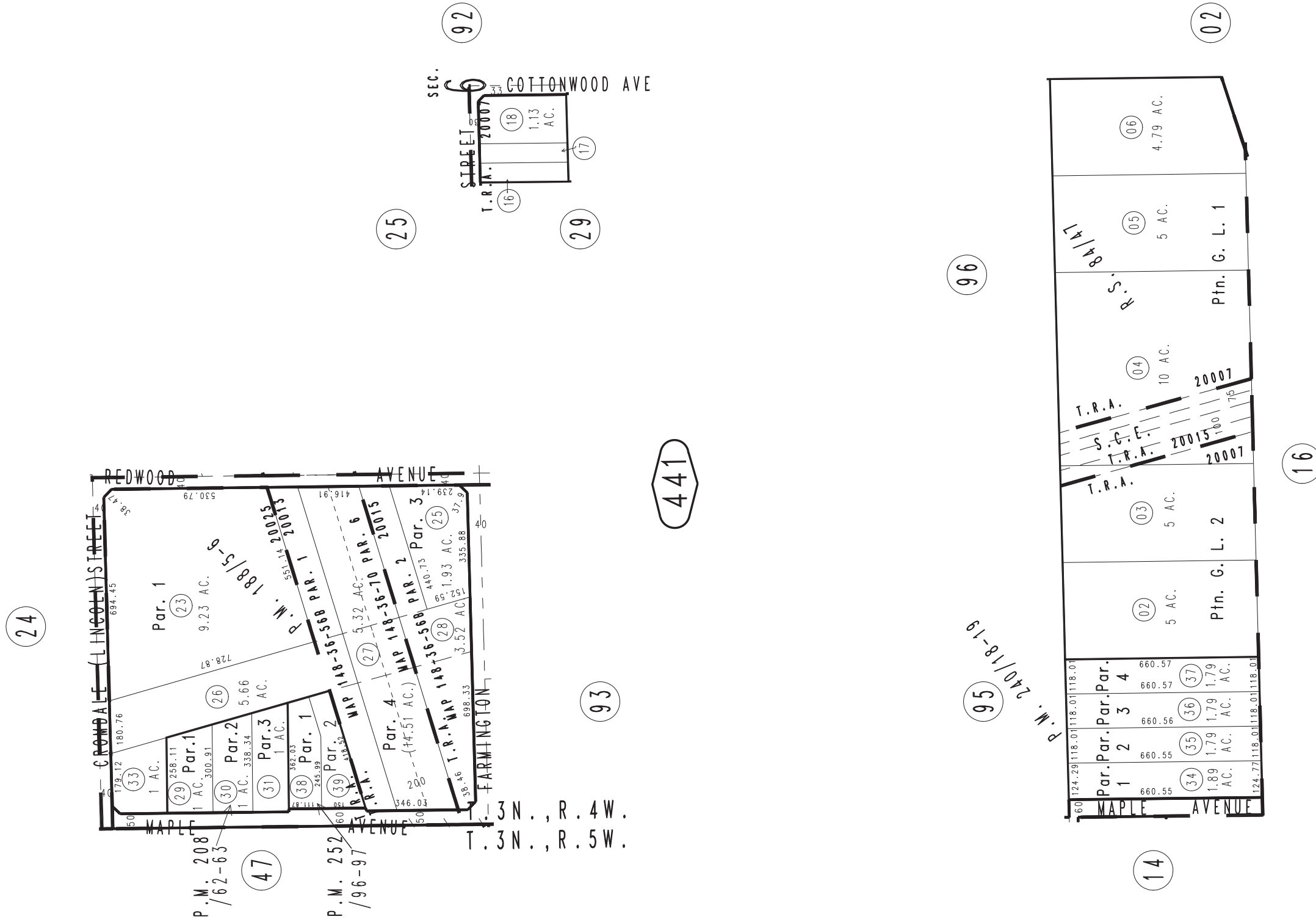
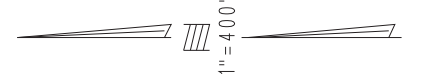
THIS MAP IS FOR THE PURPOSE OF AD VALOREM TAXATION ONLY.



# Fractional Sec.6, T.3N.,R.4W., S.B.B.&M.

City of Hesperia  
Tax Rate Area  
20007,20013  
20015,20025

0405-44



Parcel Map No. 17038, P.M. 240/18-19  
Parcel Map No. 16781, P.M. 208/62-63  
Parcel Map No. 15131, P.M. 188/5-6

Parcel Map No. 20020, P.M. 252/96-97  
Record of Survey, R.S. 84/47

Assessor's Map  
Book 0405 Page 44  
San Bernardino County

REVISED  
11/19/19 KA  
10/22/21 KA